

# EPIC<sup>®</sup> ULTRA HOUSINGS

Protection in the Harshest Environment

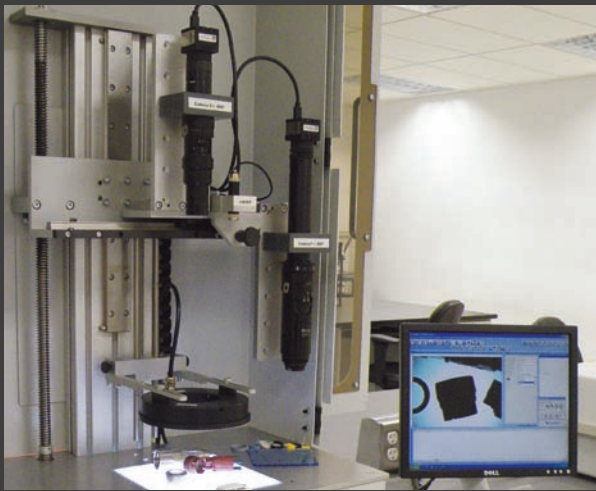
**NEW!**



**AHEAD OF THE CURVE**

 **LAPP GROUP**

# COMPLEX APPLICATIONS DEMAND SIMPLE SOLUTIONS.



## PRECISION ENGINEERED CONNECTORS

The Lapp Group North American headquarters located in Florham Park, NJ houses Lapp USA, Lapp Systems USA, Lapp Cable Works, and our last expansion, Lapp Group's Center for Competence and Innovation. In addition, this facility houses one of two US product warehouses for connectors, cables, standard cable assemblies, and accessories. Our EPIC® Brand connectors are designed to exacting specifications and manufactured to strict quality standards.

## 2600 PEOPLE, 21 LANGUAGES 1 WORLDWIDE FAMILY

In the late 1950's, Oskar Lapp turned his visionary dream into reality with the invention of the first industrially manufactured control cable, ÖLFLEX® This was the beginning of his family run and oriented company. Lapp Group produces innovative cables, connectors, accessories, and engineered solutions as a worldwide market leader. Oskar Lapp's vision continues today through his wife, Ursula Ida, and his sons, Andreas and Siegbert Lapp.

Within 50 years, the Lapp Group has grown to 2,600 employees operating around the globe developing, manufacturing and selling more than 40,000 products. With 17 manufacturing sites, 39 company-owned sales operations, more than 100 foreign representations and worldwide headquarters in Stuttgart, Germany, the Lapp Group people are everywhere you need us to be.

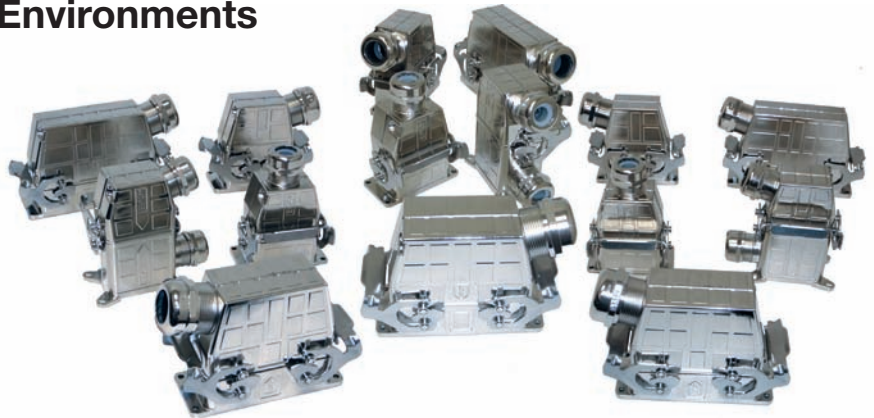


# EPIC<sup>®</sup> ULTRA

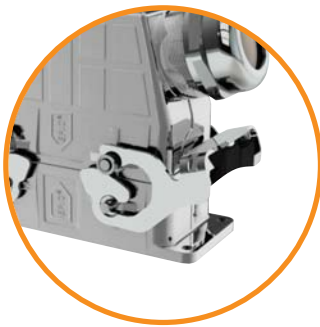
## HB RECTANGULAR CONNECTOR HOUSINGS

### Ideal For Use In Extreme Environments

- Scratch, impact, and corrosion resistant
- Dust & water tight to IP65
- Immunity from electrical interference



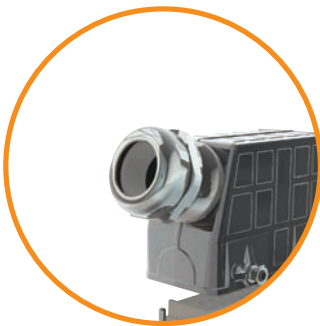
### KEY DESIGN FEATURES



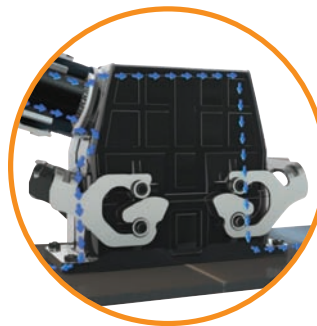
- Nickel-plated Zinc housing
- Stainless steel levers
- Recessed lip gasket
- Integrated base gasket
- Mateable with standard housings



- SKINTOP<sup>®</sup> BRUSH configuration provides 360 degree low-resistance contact area with cable shield



- Integrated SKINTOP<sup>®</sup> gland eliminates threaded connection
- Radial seal on cable jacket & strain relief



- The brush, in conjunction with the Nickel-plated housing, forms a conductive shell that functions like a Faraday cage to eliminate electrical interference



- Dust & water tight to IP65
- Passes 72 hour salt spray test



- Recess in hood accepts FLEXIMARK<sup>®</sup> ULTRA marking labels for clear and secure connector identification

# EPIC® ULTRA

## HB RECTANGULAR CONNECTOR HOUSINGS

### TECHNICAL DATA

**Material:**

- Housing: Nickel-plated die cast Zinc
- Lever & Bolts: Stainless Steel
- Sealing: NBR
- Gland Cap Nut: Nickel-plated Brass
- Gland Insert: PA thermoplastic
- Gland Seal: Special chloroprene elastomer

**Degree Of Environmental Protection (EP):** IP65

**Ambient Temperature Range:** -40 to +100 C

**Standards:** DIN EN 60529 DIN EN 6988

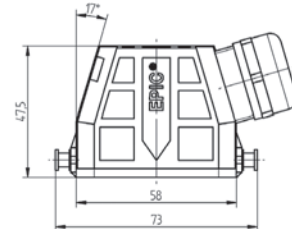
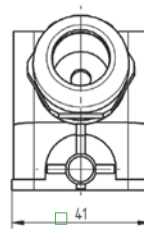
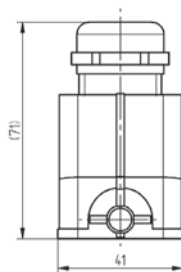
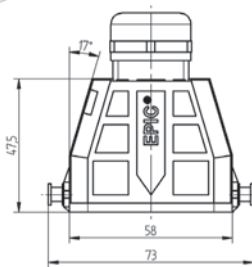
Housings	SUITABLE INSERT PLUGS AND RECEPTACLES							
	HBE	HEE	HBS	HBVE	HD	HDD	MC	MP
HB6	6	10				24	2 Mod	
HB10	10	18		3		42	3 Mod	
HB16	16	32	6	6	40	72	5 Mod	4/0, 4/2
HB24	24	46		10	64	108	7 Mod	4/8



### EPIC® ULTRA HB 6 HOODS

TOP ENTRY

SIDE ENTRY



Cable Entry Position	Part Number	Description	Cable OD Range	Min OD for Braided Shield
TOP	70250200	EPIC® ULTRA HB6 TOP ENTRY HOOD: 6-13 OD, SINGLE LEVER BOLTS	6-13 mm	
	70250201	EPIC® ULTRA HB6 TOP ENTRY HOOD: 9-17 OD, SINGLE LEVER BOLTS	9-17 mm	
	70250202	EPIC® ULTRA HB6 TOP ENTRY HOOD: 9-17 OD, SINGLE LEVER BOLTS, BRUSH	9-17 mm	6 mm
SIDE	70250203	EPIC® ULTRA HB6 SIDE ENTRY HOOD: 6-13 OD, SINGLE LEVER BOLTS	6-13 mm	
	70250204	EPIC® ULTRA HB6 SIDE ENTRY HOOD: 9-17 OD, SINGLE LEVER BOLTS	9-17 mm	
	70250205	EPIC® ULTRA HB6 SIDE ENTRY HOOD: 9-17 OD, SINGLE LEVER BOLTS, BRUSH	9-17 mm	6 mm



# EPIC® ULTRA

## HB RECTANGULAR CONNECTOR HOUSINGS

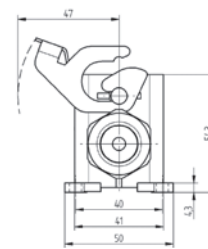
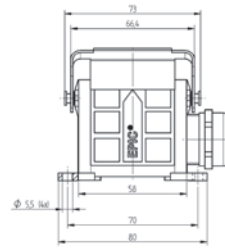
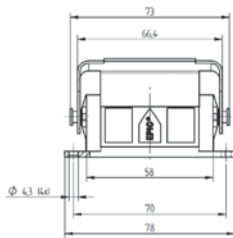
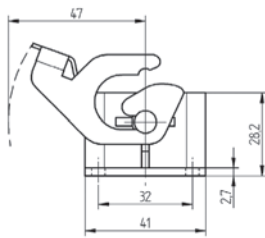


### EPIC® ULTRA HB 6 BASES



**PANEL MOUNT**

**SURFACE MOUNT**



Mounting Type	Part Number	Description	Cable OD Range	Min OD for Braided Shield
PANEL	70250206	EPIC® ULTRA HB6 PANEL MOUNT BASE: SINGLE LEVER		
SURFACE	70250207	EPIC® ULTRA HB6 SURFACE MOUNT BASE: 6-13 OD, SINGLE LEVER, 1 ENTRY	6-13 mm	
	70250208	EPIC® ULTRA HB6 SURFACE MOUNT BASE: 9-17 OD, SINGLE LEVER, 1 ENTRY	9-17 mm	
	70250209	EPIC® ULTRA HB6 SURFACE MOUNT BASE: 9-17 OD, SINGLE LEVER, 1 ENTRY, BRUSH	9-17 mm	6 mm

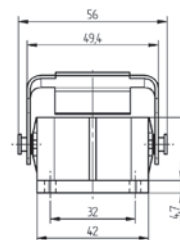
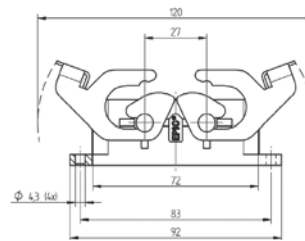
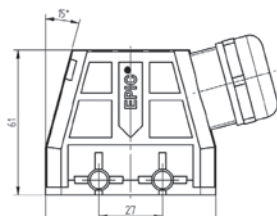
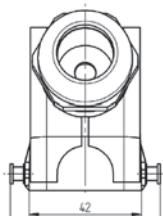


### EPIC® ULTRA HB 10 HOUSINGS



**SIDE ENTRY HOOD**

**PANEL MOUNT BASE**



Housing Type	Part Number	Description	Cable OD Range	Min OD for Braided Shield
SIDE ENTRY HOOD	70250210	EPIC® ULTRA HB10 SIDE ENTRY HOOD: DOUBLE LEVER BOLTS, 7-15 OD	6-13 mm	
	70250211	EPIC® ULTRA HB10 SIDE ENTRY HOOD: DOUBLE LEVER BOLTS, 11-21 OD	9-17 mm	
	70250212	EPIC® ULTRA HB10 SIDE ENTRY HOOD: DOUBLE LEVER BOLTS, 11-21 OD, BRUSH	9-17 mm	6 mm
PANEL MOUNT BASE	70250213	EPIC® ULTRA HB10 PANEL MOUNT BASE: DOUBLE LEVER		

# EPIC® ULTRA

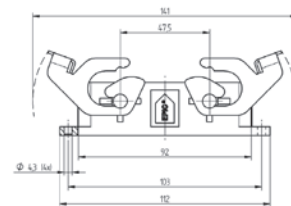
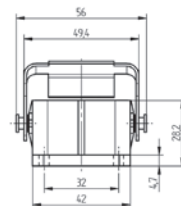
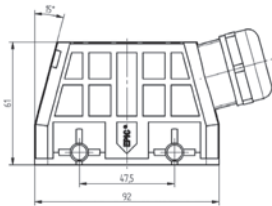
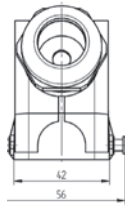
## HB RECTANGULAR CONNECTOR HOUSINGS



### EPIC® ULTRA HB 16 HOUSINGS

**SIDE ENTRY HOOD**

**PANEL MOUNT BASE**



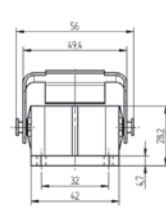
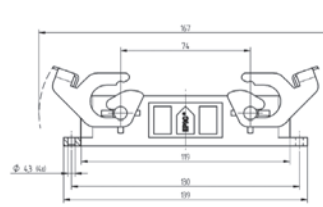
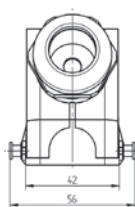
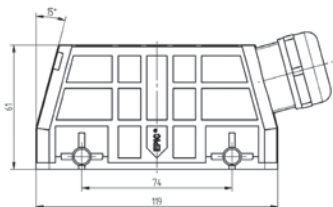
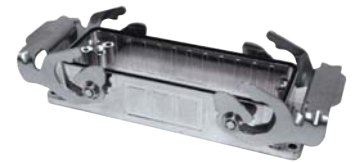
Housing Type	Part Number	Description	Cable OD Range	Min OD for Braided Shield
SIDE ENTRY HOOD	70250214	EPIC® ULTRA HB16 SIDE ENTRY HOOD: DOUBLE LEVER BOLTS, 7-15 OD	7-15 mm	
	70250215	EPIC® ULTRA HB16 SIDE ENTRY HOOD: DOUBLE LEVER BOLTS, 11-21 OD	11-21 mm	
	70250216	EPIC® ULTRA HB16 SIDE ENTRY HOOD: DOUBLE LEVER BOLTS, 11-21 OD, BRUSH	11-21 mm	8 mm
PANEL MOUNT BASE	70250217	EPIC® ULTRA HB16 PANEL MOUNT BASE: DOUBLE LEVER		



### EPIC® ULTRA HB 24 HOUSINGS

**SIDE ENTRY HOOD**

**PANEL MOUNT BASE**



Housing Type	Part Number	Description	Cable OD Range	Min OD for Braided Shield
SIDE ENTRY HOOD	70250219	EPIC® ULTRA HB24 SIDE ENTRY HOOD: DOUBLE LEVER BOLTS, 7-15 OD	7-15 mm	
	70250220	EPIC® ULTRA HB24 SIDE ENTRY HOOD: DOUBLE LEVER BOLTS, 11-21 OD	11-21 mm	
	70250221	EPIC® ULTRA HB24 SIDE ENTRY HOOD: DOUBLE LEVER BOLTS, 11-21 OD, BRUSH	11-21 mm	8 mm
PANEL MOUNT BASE	70250222	EPIC® ULTRA HB24 PANEL MOUNT BASE: DOUBLE LEVER		



FLEXIMARK® ULTRA L Labels For EPIC® ULTRA Hoods  
10 sheets of 84 labels (840 total). Part Number 83252424

# EPIC<sup>®</sup> ULTRA APPLICATIONS

## RESISTANCE TO THE ENVIRONMENT

### WATER/CORROSION



### ELECTRICAL NOISE



### DIRT



## INDUSTRIES & MARKETS

### OFF SHORE WIND TURBINES

Concerns: Weather, Corrosion & Electrical Noise



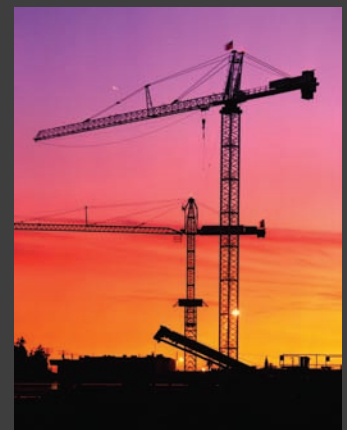
### WASTEWATER TREATMENT

Concerns: Weather & Corrosion



### CRANE & HOISTS

Concerns: Impact, Weather & Corrosion



### BREWERY

Concerns: Alcohol, Carbon Dioxide, Water & Detergents



### FOOD & BEVERAGE

Concerns: Water & Detergents



### AMUSEMENT PARKS

Concerns: Impact, Weather & Corrosion



- **Machine Tool:** Concerns: Impact, Oils, & Electrical Noise
- **Printing Machines:** Concerns: Impact, & Electrical Noise
- **Car Wash:** Concerns: Corrosion & Detergents
- **Fabricating Metal Cutting:** Concerns: Impact, Oils, & Corrosion

- **Food Processing:** Concerns: Corrosion & Detergents
- **Chemical/Petrochemical:** Concerns: Weather, Corrosion, Impact, & Electrical Noise
- **General Manufacturing:** Concerns: Impact & Electrical Noise
- **Transportation:** Concerns: Weather, Corrosion, & Electrical Noise

# ÖLFLEX®

Power And Control Cables

# SKINTOP®

Cable Glands

# SILVYN®

Conduit

# ETHERLINE®

Industrial Ethernet

# EPIC®

Connectors

# UNITRONIC®

Data Cables

# FLEXIMARK®

Marking Systems

# HITRONIC®

Fiber Optic Cables



**LAPP USA**  
29 Hanover Road  
Florham Park, NJ 07932  
800-774-3539  
[www.lappusa.com](http://www.lappusa.com)

**LAPP CANADA**  
3505 Laird Road, Unit 10  
Mississauga, Ontario L5L 5Y7  
877-799-5277  
[www.lappcanada.com](http://www.lappcanada.com)

**LAPP MEXICO**  
Metalurgia 2730  
Alamo Industrial, C.P. 44490  
Tlaquepaque, Jalisco  
800-024-5277  
[www.lappmexico.com](http://www.lappmexico.com)