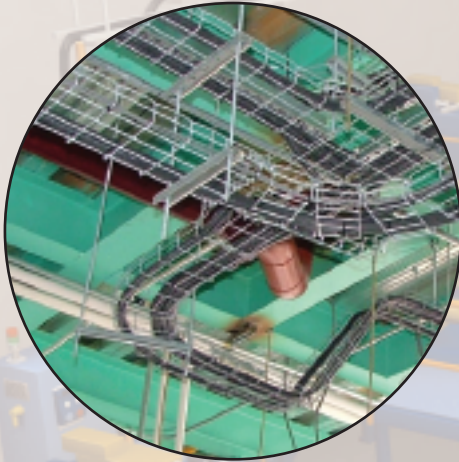


# Tray Cables from the Lapp Group

The Lapp Group offers a complete line of UL TC-ER (Exposed Run)/CSA TC cables for all your application needs.

## Do It Without Conduit



Go to [www.lappusa.com](http://www.lappusa.com) for a demo of savings .....



- From industrial to commercial.....
- From cold environments to hazardous environments.....
- With either black, red, or yellow conductors.....
- From control to power.....
- From machine tools to factory installation.....
- In either black or gray jackets.....
- From 22 AWG to 500 KCMIL.....
- For 300V to 600V max.....
- For USA and Canada.....

**Lapp Group, your one stop solution for all UL TC-ER (Exposed Run) & CSA TC cables**



**Got Tray?**



**OLFLEX® TRAY II**  
Lapp USA's premium tray cable features excellent oil resistance and flexibility. Use OLFLEX® TRAY II when you are in an industrial environment and cannot afford cable failures.

**Have a large job?**



**OLFLEX® TRAY 600**  
Designed for large volume jobs where price and availability are important; OLFLEX® TC 600 is the perfect solution. It also has good flexibility and oil resistance, making it ideal for this application.

**Need red or blue conductors for panel wiring?**



**OLFLEX® AUTO I & AUTO X**  
Designed for the automotive market, OLFLEX® AUTO I & AUTO X comes in these color conductors. Use OLFLEX® AUTO I in stationary applications and OLFLEX® AUTO X for continuous flex. Also available with yellow cores.

**Have a machine tool application?**



**OLFLEX® CONTROL TM**  
Use OLFLEX® CONTROL TM with NFPA 79, UL MTW approval.

**What about PLTC/ITC 300V Tray Applications?**



**UNITRONIC® 300**  
For 300 volt tray applications, use UNITRONIC® 300 rated PLTC-ER & ITC. It has excellent oil resistance for a data cable and is very flexible for easy installation.

**Left out in the Cold?**



**OLFLEX® CONTROL COLD**  
For applications where cold temperature is a concern, such as refrigerated food packaging, use OLFLEX® CONTROL COLD, flexible to -40°C.

**In a hazardous location?**



**OLFLEX® POWER CLASS 1 DIV 1**  
OLFLEX® POWER CLASS 1 DIV 1 can be used in Class 1 Division 1 locations. It is flexible for much easier installation vs. armored or metal clad cables.

**Using VFD drives?**



**OLFLEX® VFD SLIM**  
OLFLEX® VFD SLIM is designed to hold up to electrical distortions without failure and with TC-ER, it can be used in tray.

**Need a brake?**



**OLFLEX® VFD with SIGNAL**  
OLFLEX® VFD with SIGNAL has an additional signal pair that can be used for a brake or temperature sensor.

**Let's talk Horse Power (HP)...**



**OLFLEX® VFD SYMMETRICAL**  
For larger VFD drives, OLFLEX® SYMMETRICAL is the solution. Available from 1 AWG to 500 KCMIL.

UL TC-ER	CSA TC	UL Listed	UL AWM	CSA	CSA AWM	Other Approvals	RoHS	Jacket Color	Oil Rating*	Flame Rating*
X	X	MTW DP-1 Wet 75°	X	CIC FT4	X	MSHA (Shielded Only) C1D2*, CE NOM	X	Black PVC	OR-02	FR-03
X	X	WET 75°C Bus Drop **	X	CIC FT4	X	CE NOM C1D2*	X	Black PVC	OR-01	FR-03
X	X	MTW Wet 75°	X	X	X	CE NOM C1D2*	X	X-Black TPE I-Gray PVC	X-OR-03 I-OR-02	X-FR-03 I-FR-03
X	X	MTW 75° Wet Bus Drop **	X	CIC FT4	X	NFPA-79 C1D2*, NOM CE	X	Gray PVC	OR-02	FR-03
		PLTC ITC CMG	X	CMG FT4	X	CE NOM	X	Gray PVC	OR-02	FR-03
X	X	MTW DP-1 Wet 75°	X	CIC FT4	X	CE NOM -40° Cold Impact	X	Black PVC	OR-01	FR-03
X	X	UL STOW	X	CSA STOW CIC FT4	X	C1D1* CE	X	Black TPE	OR-03	FR-03
X	X	DP-1 105° C	X	CIC FT4	X	MSHA CE NOM C1D2*	X	Black PVC	OR-02	FR-03
X	X	DP-1 105° C	X	CIC FT4	X	MSHA CE NOM C1D2*	X	Black TPE	OR-03	FR-03
X	X			CIC FT4		MSHA CE C1D2*	X	Black PVC	OR-02	FR-03

\*\* Bus Drop- Limited by AWG & Conductor Count. Visit our website to view the product specification for more detail.

\*For more detail on the oil & flame ratings, visit our website and click products.

\* C1D2 or C1D1 is the UL Class and Division ratings for hazardous locations.

The products and specifications set forth in this brochure are subject to change without notice and Lapp Group disclaims any and all liability for such variations. Lapp Group further disclaims any and all liability for typographical, printing, or production errors or changes affecting the products and/or the specifications.