

SILVYN®

18



Conduit & Accessories

SILVYN® Protective Conduit Systems Overview		577
SILVYN® RILL PA 6 Conduit Non-Metallic Flexible Quick Connect Conduit Systems		578
SILVYN® RILL PA 12 Conduit Non-Metallic Highly Flexible Quick Connect Conduit Systems		579
SILVYN® EL Conduit Flexible Reinforced Spiral PVC Conduit		580
SILVYN® FPS Conduit Continuous Flex Spiral Steel Reinforced PVC Conduit		581
SILVYN® FD-PU Conduit Continuous Flex Spiral Steel Reinforced PUR Conduit		582
SILVYN® AS-P Conduit Flexible Steel Reinforced PVC Conduit		583
SILVYN® AS Conduit Flexible Steel Reinforced Metal Conduit		584
SILVYN® EDU-AS Conduit Flexible Metal Conduit for Heavy Mechanical Stress		585
SILVYN® KCLICK-G Series: KCLICK-GN, KCLICK-GP and KCLICK-GM Conduit Connectors for SILVYN® RILL PA 6 & PA 12		586
SILVYN® KCLICK-W Series: KCLICK-WN, KCLICK-WP and KCLICK-WM Conduit Connectors for SILVYN® RILL PA 6 & PA 12		587
SILVYN® ELG/ ELG-W Straight Conduit Connectors for SILVYN® EL Conduit		588
SILVYN® ELW/ ELW-M 90° Angle Conduit Connectors for SILVYN® EL Conduit		589
SILVYN® LKI/LKI-M Conduit Connectors for SILVYN® FD-PU & FPS Conduit		590
SILVYN® USK/ USK-M Conduit Connectors for SILVYN® FD-PU & FPS Conduit		591
SILVYN® US/ US-M Brass Conduit Connectors for SILVYN® AS, AS-P, EDU-AS, FD-PU & FPS Conduit		592
SILVYN® US MS-DR Brass Sealing Ring for SILVYN® AS & EDU-AS Conduit		593

Conduit & Accessories

	Page 578	Page 579	Page 580	Page 581	Page 582	Page 583	Page 584	Page 585
								
	SILVYN® RILL PA 6	SILVYN® RILL PA 12	SILVYN® EL	SILVYN® FPS	SILVYN® FD-PU	SILVYN® AS-P	SILVYN® AS	SILVYN® EDU-AS
Temperature Range	-40°C to 115°C	-50°C to 100°C	-20°C to 60°C	-20°C to 80°C	-40°C to 80°C	-25°C to 80°C	up to 220°C	up to 220°C
IP Rating*	IP 68	IP 68	IP 53	IP 68	IP 68	IP 65	IP 40	IP 40
Flexibility	Medium	High	High	Very High	Very High	High	High	High
Cross Pressure Strength	Medium	Medium	Medium	Medium	Medium	Medium	Medium	Medium
Tensile Strength	Medium	Low	Medium	Medium	Medium	Medium	Medium	Very High
Bending Radius	Medium	High	High	Very High	Very High	High	Very High	Very High
Oil Resistance	Very High	Very High	Medium	Medium	Very High	Medium	Very High	Very High
Solvent Resistance	Low	Low	Low	Low	Medium	Low	Very High	Very High
Alternate Bending Radius	High	Very High	High	Very High	Very High	Medium	Low	Very High
Flame Resistance	High	High	Low	Low	Medium	High	Very High	Very High

*IP Rating is for continuous length of conduit excluding fittings.

SILVYN® RILL PA 6

Non-Metallic Flexible Quick Connect Conduit Systems



The SILVYN® RILL PA 6 is a flexible, non-metallic corrugated conduit suitable for use in various industrial applications. It is resistant to liquids, oils and gases, and highly resistant to acids and solvents.

Application Advantages:

- Halogen-free , flame retardant and self-extinguishing
- Durable, long lasting conduit that is rugged yet flexible
- For use in controls, moving machine parts, motor and internal connections, as well as industrial, medical and electrical applications



SILVYN®
KLICK-G
See Page 586




SILVYN®
KLICK-W
See Page 587

Technical Data:

 **Materials:** Polyamide
Halogen & Silicone Free
UL 94 V0

 **Color:** Black or Gray

 **Temperature range:** -40°C to +115°C

 **Protection:** IP 68

SILVYN® RILL PA 6: Non-Metallic Flexible Conduit

Part Number		Outer Diameter		Inner Diameter		Bend Radius		Conduit Coil Put-Ups Feet	Thread Type & Size for Fittings		
Black	Gray	inches	mm	inches	mm	inches	mm		NPT	PG	Metric
61746935	61746939	.394	10.0	.256	6.5	.512	13	164	NPT-1/4"	PG-7	M-10X1.0
61746945	61746940	.512	13.0	.394	10.0	.787	20	164	NPT-1/4"	PG-9	M-12X1.5
61746955	61746950	.622	15.8	.472	12.0	1.378	35	164	NPT-3/8"	PG-11	M-16X1.5
61747015	61747010	.728	18.5	.563	14.3	1.575	40	164	--	PG-13	--
61746965	61746960	.835	21.2	.650	16.5	1.772	45	164	NPT-1/2"	PG-16	M-20X1.5
61746975	61746970	1.122	28.5	.906	23.0	2.165	55	164	NPT-3/4"	PG-21	M-25 X1.5
61746985	61746980	1.358	34.5	1.142	29.0	2.559	65	82	NPT-1"	PG-29	M-32X1.5
61746995	61746990	1.673	42.5	1.417	36.0	3.543	90	82	NPT-1-1/4"	PG-36	M-40X1.5
61747005	61747000	2.146	54.5	1.890	48.0	3.937	100	82	NPT-1-1/2"	PG-48	M-50X1.5

* Fittings available in NPT, PG, and Metric, see SILVYN® KLICK-G on page 586 and SILVYN® KLICK-W on page 587.

SILVYN® RILL PA 12

Non-Metallic Highly Flexible Quick Connect Conduit Systems



The SILVYN® RILL PA 12 is a continuous flex non-metallic, corrugated conduit. It is resistant to liquids, oils and gas, and highly resistant to acids and solvents.

Application Advantages:

- Halogen-free, flame retardant and self-extinguishing
- High flexibility makes it an excellent choice for applications such as machine and plant construction where frequent flexing and bending is required
- Durable, long lasting conduit that is rugged yet extremely flexible
- For use in controls, moving machine parts, motor and internal connections, as well as industrial, medical and electrical applications





SILVYN®
KLICK-G
See Page 586





SILVYN®
KLICK-W
See Page 587

Technical Data:

 **Materials:** Polyamide
Halogen & Silicone Free
UL 94 V2

 **Temperature range:** -50° C to +100° C

 **Color:** Black or Gray

 **Protection:** IP 68

SILVYN® RILL PA 12: Non-Metallic Highly Flexible Conduit

Part Number		Outer Diameter		Inner Diameter		Bend Radius		Conduit Coil Put-Ups Feet	Thread Type & Size for Fittings		
Black	Gray	inches	mm	inches	mm	inches	mm		NPT	PG	Metric
61815105	61815100	.394	10.0	.256	6.5	.512	13	164	NPT-1/4"	PG-7	M-10X1.0
61815115	61815110	.512	13.0	.394	10.0	.591	15	164	NPT-1/4"	PG-9	M-12X1.5
61815125	61815120	.622	15.8	.472	12.0	.866	22	164	NPT-3/8"	PG-11	M-16X1.5
61815185	61815180	.728	18.5	.563	14.3	1.063	27	164	--	PG-13	--
61815135	61815130	.835	21.2	.650	16.5	1.378	35	164	NPT-1/2"	PG-16	M-20X1.5
61815145	61815140	1.122	28.5	.906	23.0	1.772	45	164	NPT-3/4"	PG-21	M-25X1.5
61815155	61815150	1.358	34.5	1.142	29.0	1.969	50	82	NPT-1"	PG-29	M-32X1.5
61815165	61815160	1.673	42.5	1.417	36.0	3.150	80	82	NPT-1-1/4"	PG-36	M-40X1.5
61815175	61815170	2.146	54.5	1.890	48.0	3.937	100	82	NPT-1-1/2"	PG-48	M-50X1.5

* Fittings available in NPT, PG, and Metric, see SILVYN® KLICK-G on page 586 and SILVYN® KLICK-W on page 587.

SILVYN® EL Conduit

Flexible Reinforced Spiral PVC Conduit



SILVYN® EL is designed with a flexible PVC casing that has a rigid PVC spiral welded into the conduit, allowing it to be very flexible while maintaining its shape.

Application Advantages:

- Strong and durable conduit that is rugged yet flexible
- Smooth inner walls enable cables to be pulled through easily
- The SILVYN® EL is UL approved and recommended for applications with automated machines



SILVYN®
ELG
See Page 588



SILVYN®
ELW
See Page 589

Technical Data:

Materials: Flexible PVC sheath with rigid PVC spiral

Color: Gray *

Temperature range: -20° C to +60° C

Protection: IP 53

SILVYN® EL Conduit: Flexible Reinforced Spiral PVC

Part Number	Outer Diameter		Inner Diameter		Bend Radius		Conduit Coil Put-Ups Feet	Thread Type & Size for Fittings	
	inches	mm	inches	mm	inches	mm		PG	Metric
61747360	.579	14.7	.394	10	.787	20	98	PG-7	M-12X1.5
61747370	.654	16.6	.472	12	.984	25	98	PG-9	M-16X1.5
61747380	.815	20.7	.630	16	1.181	30	98	PG-11/13	M-20X1.5
61747390	1.091	27.7	.866	22	1.575	40	98	PG-16	M-25X1.5
61747400	1.205	30.6	.984	25	1.772	45	98	PG-21	M-32X1.5
61747410	1.319	33.5	1.102	28	1.969	50	98	PG-29	M-32X1.5
61747420	1.614	41.0	1.378	35	2.362	60	98	PG-36	M-40X1.5
61747430	1.827	46.4	1.575	40	2.756	70	98	PG-42	M-50X1.5
61747440	2.252	57.2	1.969	50	3.346	85	98	PG-48	M-63X1.5

* Black available upon request. (Replace last digit with 5)

** Fittings available in PG and Metric, see SILVYN® ELG on page 588 and SILVYN® ELW on page 589.

SILVYN® FPS Conduit



Continuous Flex Spiral Steel Reinforced PVC Conduit

SILVYN® FPS is designed with an insulated spiral steel spring with a PVC jacket which creates a continuous flexing conduit.

Application Advantages:

- Strong and durable conduit that is rugged yet extremely flexible
- Silicone free, UV and chemical resistant
- Airtight and watertight
- Excellent for applications where abrasion resistance is a concern



SILVYN®
USK
See Page 591



SILVYN®
LKI
See Page 590

Technical Data:

Materials: Flexible PVC with an insulated spiral steel spring

Temperature range: -20°C to +80°C

Color: Gray

Protection: IP 68

SILVYN® FPS Conduit: Continuous Flex PVC Conduit

Part Number	Outer Diameter		Inner Diameter		Bend Radius		Conduit Coil Put-Ups Feet	PG	Thread Type & Size for Fittings	
	inches	mm	inches	mm	inches	mm			Metric LKI-M	Metric UK-M
61711550	.394	10	.276	7	.315	8	82	PG-7	M-12X1.5	M-10X1.5
61711590	.551	14	.394	10	.394	10	82	PG-9	M-16X1.5	M-12X1.5
61711630	.669	17	.512	13	.512	13	82	PG-11	M-20X1.5	M-16X1.5
61711670	.748	19	.591	15	.591	15	82	PG -13	---	---
61711710	.827	21	.630	16	.669	17	82	PG-16	M-25X1.5	M-20X1.5
61711750	1.063	27	.866	22	.787	20	82	PG-21	M-32X1.5	M-25X1.5
61711790	1.417	36	1.142	29	.984	25	82	PG-29	M-40X1.5	M-32X1.5
61711830	1.772	45	1.496	38	1.417	36	82	PG-36	M-50X1.5	M-40X1.5
61711910	2.205	56	1.890	48	1.575	40	82	PG-48	M-63X1.5	M-50X1.5

* Fittings available in PG and Metric, see SILVYN® USK on page 591 and SILVYN® LKI on page 590.

SILVYN® FD-PU Conduit

Continuous Flex Spiral Steel Reinforced PUR Conduit



SILVYN® FD-PU is designed with a PVC insulated spiral steel spring and a PUR jacket to provide a durable continuous flexing conduit.

Application Advantages:

- Halogen and silicon free, resistant to oils, gas, UV, acids and alkalis
- Suitable for cleanroom applications as it is airtight, watertight and does not out gas
- Highly abrasion proof
- Suitable for harsh environment applications, as well as automated machines, machine tools and switchgears due to the protective PUR jacket



SILVYN®
USK
See Page 591



SILVYN®
LKI
See Page 590

Technical Data:

Materials: Polyurethane jacket with PVC insulated spring steel wire spiral
UL 94 V0

Color: Metallic Blue

Protection: IP 68

Temperature range: -40° C to +80° C

SILVYN® FD-PU Conduit: Continuous Flex PUR Conduit

Part Number	Outer Diameter		Inner Diameter		Bend Radius		Conduit Coil Put-Ups Feet	PG	Thread Type & Size for Fittings	
	inches	mm	inches	mm	inches	mm			M- LKI-M	Metric USK-M/US-M
64453662	.394	10	.276	7	.315	8	164	PG-7	M-12X1.5	M-10X1.5
64453672	.551	14	.394	10	.394	10	164	PG-9	M-16X1.5	M-12X1.5
64453682	.669	17	.512	13	.512	13	164	PG-11	M-20X1.5	M-16X1.5
64453692	.748	19	.591	15	.519	15	164	PG-13	---	---
64453702	.827	21	.630	16	.669	17	164	PG-16	M-25X1.5	M-20X1.5
64453712	1.063	27	.827	21	.787	20	164	PG-21	M-32X1.5	M-25X1.5
64453721	1.417	36	1.142	29	.984	25	82	PG-29	M-40X1.5	M-32X1.5
64453731	1.772	45	1.496	38	1.417	36	82	PG-36	M-50X1.5	M-40X1.5
64453751	2.205	56	1.890	48	1.575	40	82	PG-48	M-63X1.5	M-50X1.5

* Fittings available in PG and Metric, see SILVYN® ELG on page 588 and SILVYN® ELW on page 589.

SILVYN® AS-P Conduit

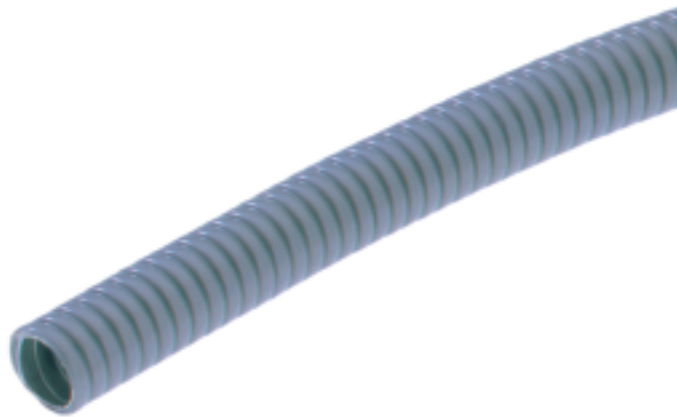
Flexible Steel Reinforced PVC Conduit



SILVYN® AS-P is designed with an interlocking spirally wound metal armor surrounded with a PVC jacket.

Application Advantages:

- The inner armor allows the SILVYN® AS-P to be highly resistant to pressure, impact and mechanical stress, while providing superior flexing qualities
- The PVC jacket provides resistance against water, oil and acids
- Ideal for use in machine and equipment manufacturing with harsh and/or wet environments



SILVYN®
US
See Page 592



Technical Data:

	Materials:	Galvanized Steel with PVC spiral Silicone Free		Color:	Gray
	Temperature range:	-25° C to +80° C +100° C for short durations		Protection:	IP 65

SILVYN® AS-P Conduit: Steel Reinforced PVC Conduit

Part Number	Outer Diameter		Inner Diameter		Bend Radius		Conduit Coil Put-Ups Feet	Thread Type & Size for Fittings	
	inches	mm	inches	mm	inches	mm		PG	Metric
64400010	.394	10	.276	7	1.260	32	164	PG-7	M-10X1.5
64400020	.551	14	.394	10	1.575	40	164	PG-9	M-12X1.5
64400030	.669	17	.512	13	1.772	45	164	PG-11	M-16X1.5
64400040	.748	19	.591	15	2.047	52	164	PG-13	---
64400050	.827	21	.669	17	2.283	58	164	PG-16	M-20X1.5
64400060	1.063	27	.866	22	2.835	72	164	PG-21	M-25X1.5
64400070	1.417	36	1.142	29	3.858	98	82	PG-29	M-32X1.5
64400080	1.772	45	1.496	38	4.646	118	82	PG-36	M-40X1.5
64400090	2.205	56	1.929	49	5.512	140	82	PG-48	M-50X1.5

* Fittings available in PG and Metric, see SILVYN® US on page 592.

SILVYN® AS Conduit

Flexible Steel Reinforced Metal Conduit



SILVYN® AS is designed with an interlocking spirally wound metal armor.

Application Advantages:

- Highly resistant to pressure, impact and mechanical stress, while providing superior flexing qualities
- Ideal for heavy mechanical stress



SILVYN®
US
See Page 592



SILVYN®
US MS-DR
See Page 593

Technical Data:



Materials: Galvanized Steel



Color: Gray



Temperature range: up to +220°C



Protection: IP 40

SILVYN® AS Conduit: Steel Reinforced Metal Conduit

Part Number	Outer Diameter		Inner Diameter		Bend Radius		Conduit Coil Put-Ups Feet	Thread Type & Size for Fittings	
	inches	mm	inches	mm	inches	mm		PG	Metric
61802080	.394	10	.315	8	1.102	28	164	PG-7	M-10X1.5
61802090	.551	14	.433	11	1.339	34	164	PG-9	M-12X1.5
61802100	.669	17	.551	14	1.575	40	164	PG-11	M-16X1.5
61802110	.748	19	.630	16	1.772	45	164	PG-13	---
61802120	.827	21	.709	18	1.969	50	164	PG-16	M-20X1.5
61802130	1.063	27	.906	23	2.480	63	164	PG-21	M-25X1.5
61802140	1.417	36	1.220	31	3.346	85	82	PG-29	M-32X1.5
61802150	1.772	45	1.575	40	3.937	100	82	PG-36	M-40X1.5
61802170	2.205	56	2.008	51	4.921	125	82	PG-48	M-50X1.5

* Fittings available in PG and Metric, see SILVYN® US on page 592 and SILVYN® US MS-DR on page 593.

SILVYN® EDU-AS Conduit

Flexible Metal Conduit for Heavy Mechanical Stress



SILVYN® EDU-AS is designed with an interlocking spirally wound metal armor surrounded by a galvanized steel wire braid.

SILVYN® EDU-AS is recommended for use with the SILVYN® US brass connector to provide a secure locking system. The SILVYN® US MS-DR is a brass sealing ring, which needs to be used with the SILVYN® AS at temperatures above 100°C.

Application Advantages:

- Suitable for use under heavy mechanical stresses as per DIN 49012
- High temperature resistance allows for exposure to extreme heat
- High tensile, twisting and bending strength, while offering high flexibility



SILVYN®
US
See Page 592



SILVYN®
US MS-DR
See Page 593

Technical Data:

 Materials: Galvanized Steel with a Galvanized Steel wire braid

 Color: Gray

 Temperature range: up to 220°C

 Protection: IP 40

SILVYN® EDU-AS Conduit: Metal Conduit for Heavy Mechanical Stress

Part Number	Outer Diameter		Inner Diameter		Bend Radius		Conduit Coil Put-Ups Feet	Thread Type & Size for Fittings	
	inches	mm	inches	mm	inches	mm		PG	Metric
61802380	.394	10	.276	7	1.102	28	164	PG-7	M10X1.5
61802390	.551	14	.394	10	1.339	34	164	PG-9	M12X1.5
61802400	.669	17	.512	13	1.575	40	164	PG-11	M16X1.5
61802410	.748	19	.591	15	1.772	45	164	PG-13	---
61802420	.827	21	.669	17	1.969	50	164	PG-16	M20X1.5
61802430	1.063	27	.866	22	2.480	63	164	PG-21	M25X1.5
61802440	1.417	36	1.142	29	3.346	85	82	PG-29	M32X1.5
61802450	1.778	45	1.496	38	3.937	100	82	PG-36	M40X1.5
61802470	2.205	56	1.929	49	5.315	135	82	PG-48	M50X1.5

* Fittings available in PG and Metric, see SILVYN® US on page 592 and SILVYN® US MS-DR on page 593.

SILVYN® KLICK-G Series

KLICK-GN, KLICK-GP and KLICK-GM





Conduit Connectors for SILVYN® RILL PA 6 & PA 12 Conduit



The SILVYN® KLICK-G series is available in NPT, PG and Metric threads. This straight conduit gland is used to create a quick, secure connection to the SILVYN® RILL conduit.



Technical Data:

 Materials:	Polyamide- Silicone Free	 Color:	Black or Gray
 Temperature range:	-30°C to +100°C	 Protection:	IP 68

SILVYN® KLICK-GN: NPT Conduit Connectors

Part Number Black	Thread Type & Size	Conduit Outer Diameter		Thread Length		For SILVYN® RILL PA 6 Conduit		For SILVYN® RILL PA 12 Conduit		Standard Pack Size
		inches	mm	inches	mm	Black	Gray	Black	Gray	
61800705	NPT-1/4"	.394	10.0	.453	11.5	61746935	61746939	61815105	61815100	50
61800715	NPT-3/8"	.512	13.0	.472	12.0	61746945	61746940	61815115	61815110	50
61800725	NPT-3/8"	.622	15.8	.472	12.0	61746955	61746950	61815125	61815120	50
61800745	NPT-1/2"	.835	21.2	.472	12.0	61746965	61746960	61815135	61815130	50
61800755	NPT-3/4"	1.122	28.5	.551	14.0	61746975	61746970	61815145	61815140	25
61800765	NPT-1"	1.358	34.5	.630	16.0	61746985	61746980	61815155	61815150	25
61800775	NPT-1-1/4"	1.673	42.5	.709	18.0	61746995	61746990	61815165	61815160	25
61800785	NPT-2"	2.146	54.5	.827	21.0	61747005	61747000	61815175	61815170	10

SILVYN® KLICK-GP: PG Conduit Connectors

Part Number Black	Part Number Gray	Thread Type & Size	Conduit Outer Diameter		Thread Length		For SILVYN® RILL PA 6 Conduit		For SILVYN® RILL PA 12 Conduit		Standard Pack Size
			inches	mm	inches	mm	Black	Gray	Black	Gray	
61800865	61800860	PG-7	.394	10.0	.394	10.0	61746935	61746939	61815105	61815100	50
61800875	61800870	PG-9	.512	13.0	.394	10.0	61746945	61746940	61815115	61815110	50
61800885	61800880	PG-11	.622	15.8	.394	10.0	61746955	61746950	61815125	61815120	50
61800855	61800850	PG-13	.728	18.5	.433	11.0	61747015	61747010	61815185	61815180	50
61800895	61800890	PG-16	.835	21.2	.472	12.0	61746965	61746960	61815135	61815130	50
61800905	61800900	PG-21	1.122	28.5	.472	12.0	61746975	61746970	61815145	61815140	25
61800915	61800910	PG-29	1.358	34.5	.472	12.0	61746985	61746980	61815155	61815150	25
61800925	61800920	PG-36	1.673	42.5	.453	11.5	61746995	61746990	61815165	61815160	25
61800935	61800930	PG-48	2.146	54.5	.571	14.5	61747005	61747000	61815175	61815170	10

SILVYN® KLICK-GM: Metric Conduit Connectors

Part Number Black	Part Number Gray	Thread Type & Size	Conduit Outer Diameter		Thread Length		For SILVYN® RILL PA 6 Conduit		For SILVYN® RILL PA 12 Conduit		Standard Pack Size
			inches	mm	inches	mm	Black	Gray	Black	Gray	
55501005	55501000	M-10X1.0	.394	10.0	.453	11.5	61746935	61746939	61815105	61815100	50
55501015	55501010	M-12X1.5	.512	13.0	.472	12.0	61746945	61746940	61815115	61815110	50
55501035	55501030	M-16X1.5	.622	15.8	.453	11.5	61746955	61746950	61815125	61815120	50
55501055	55501050	M-20X1.5	.835	21.2	.512	13.0	61746965	61746960	61815135	61815130	50
55501065	55501060	M-25X1.5	1.122	28.5	.512	13.0	61746975	61746970	61815145	61815140	25
55501075	55501070	M-32X1.5	1.358	34.5	.591	15.0	61746985	61746980	61815155	61815150	25
55501085	55501080	M-40X1.5	1.673	42.5	.591	15.0	61746995	61746990	61815165	61815160	25
55501095	55501090	M-50X1.5	2.146	54.5	.610	15.5	61747005	61747000	61815175	61815170	10

SILVYN® KLICK-W Series

KLICK-WN, KLICK-WP and KLICK-WM



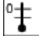

Conduit Connectors for SILVYN® RILL PA 6 & PA 12 Conduit



The SILVYN® KLICK-W series is available in NPT, PG and Metric threads. This 90° angled conduit gland is used to create a quick, secure connection to the SILVYN® RILL conduit.



Technical Data:

 Materials:	Polyamide- Silicone Free	 Color:	Black or Gray
 Temperature range:	-30°C to +100°C	 Protection:	IP 67 IP 69K according to DIN 40050 T.9

SILVYN® KLICK-WN: NPT Conduit Connectors

Part Number Black	Part Number Gray	Thread Type & Size	Conduit Outer Diameter		Thread Length		For SILVYN® RILL PA 6 Conduit		For SILVYN® RILL PA 12 Conduit		Standard Pack Size
			inches	mm	inches	mm	Black	Gray	Black	Gray	
61800015	55502600	NPT-1/4"	.394	10.0	.394	10.0	61746935	61746939	61815105	61815100	50
61800025	55502610	NPT-1/4"	.512	13.0	.453	11.5	61746945	61746940	61815115	61815110	50
61800035*	55502620	NPT-3/8"	.622	15.8	.472	12.0	61746955	61746950	61815125	61815120	50
61800045	55502630	NPT-1/2"	.835	21.2	.472	12.0	61746965	61746960	61815135	61815130	50
61800055*	55502640	NPT-3/4"	1.122	28.5	.551	14.0	61746975	61746970	61815145	61815140	25
61800065*	55502650	NPT-1"	1.358	34.5	.630	16.0	61746985	61746980	61815155	61815150	10
61800075	55502660	NPT-1-1/4"	1.673	42.5	.709	18.0	61746995	61746990	61815165	61815160	10
61800085	55502670	NPT-1-1/2"	2.146	54.5	.709	18.0	61747005	61747000	61815175	61815170	5

CSA Approved

SILVYN® KLICK-WP: PG Conduit Connectors

Part Number Black	Part Number Gray	Thread Type & Size	Conduit Outer Diameter		Thread Length		For SILVYN® RILL PA 6 Conduit		For SILVYN® RILL PA 12 Conduit		Standard Pack Size
			inches	mm	inches	mm	Black	Gray	Black	Gray	
61801025	61801020	PG-9	.512	13.0	.394	10	61746945	61746940	61815115	61815110	50
61801035	61801030	PG-11	.622	15.8	.394	10	61746955	61746950	61815125	61815120	50
56000105	56000100	PG-13	.728	18.5	.433	11	61747015	61747010	61815185	61815180	50
61801045	61801040	PG-16	.835	21.2	.472	12	61746965	61746960	61815135	61815130	50
61801055	61801050	PG-21	1.122	28.5	.472	12	61746975	61746970	61815145	61815140	25
61801065	61801060	PG-29	1.358	34.5	.472	12	61746985	61746980	61815155	61815150	10
61801075	61801061	PG-36	1.673	42.5	.472	12	61746995	61746990	61747085	61714200	10
61801085	61801062	PG-48	2.146	54.5	.551	14	61747005	61747000	61747095	61714210	5

SILVYN® KLICK-WM: Metric Conduit Connectors

Part Number Black	Part Number Gray	Thread Type & Size	Conduit Outer Diameter		Thread Length		For SILVYN® RILL PA 6 Conduit		For SILVYN® RILL PA 12 Conduit		Standard Pack Size
			inches	mm	inches	mm	Black	Gray	Black	Gray	
55501115	55501110	M-10X1.0	.394	10.0	.433	11	61746935	61746939	61815105	61815100	50
55501125	55501120	M-12X1.5	.512	13.0	.472	12	61746945	61746940	61815115	61815110	50
55501145	55501140	M-16X1.5	.622	15.8	.472	12	61746955	61746950	61815125	61815120	50
55501165	55501160	M-20X1.5	.835	21.2	.512	13	61746965	61746960	61815135	61815130	50
55501185	55501180	M-25X1.5	1.122	28.5	.512	13	61746975	61746970	61815145	61815140	25
55501205	55501200	M-32X1.5	1.358	34.5	.591	15	61746985	61746980	61815155	61815150	10
55501225	55501220	M-40X1.5	1.673	42.5	.591	15	61746995	61746990	61815165	61815160	10
55501245	55501240	M-50X1.5	2.146	54.5	.630	16	61747005	61747000	61815175	61815170	5

SILVYN® ELG/ ELG-M

Straight Conduit Connectors for SILVYN® EL Conduit



Metric



SILVYN® ELG is a straight conduit connector especially designed for use with the SILVYN® EL conduit to create a tight and secure seal. SILVYN® ELG is available in PG and Metric threads.



Technical Data:



Materials:

Body:

Clamping Seal:

Polypropylene

Polyamide



Color:

Gray



Protection:

IP 65



Temperature range:

-20° C to +60° C

SILVYN® ELG: PG Conduit Connectors

Part Number	Thread Type & Size	Conduit Outer Diameter		Thread Length		For SILVYN® EL Conduit Gray	Standard Pack Size
		inches	mm	inches	mm		
55000580	PG-7	.579	14.7	.433	11	61747360	50
55000590	PG-9	.646	16.4	.433	11	61747370	50
55000600	PG-11	.815	20.7	.472	12	61747380	50
55000610	PG-13	.815	20.7	.472	12	61747380	50
55000620	PG-16	1.091	27.7	.591	15	61747390	50
55000630	PG-21	1.205	30.6	.591	15	61747400	50
55000640	PG-29	1.319	33.5	.591	15	61747410	25
55000650	PG-36	1.614	41.0	.709	18	61747420	25
55000660	PG-42	1.827	46.4	.748	19	61747430	25
55000670	PG-48	2.252	57.2	.787	20	61747440	25

SILVYN® ELG-M: Metric Conduit Connectors

Part Number	Thread Type & Size	Conduit Outer Diameter		Thread Length		For SILVYN® EL Conduit Gray	Standard Pack Size
		inches	mm	inches	mm		
55502190	M-12X1.5	.579	14.6	.433	11.0	61747360	50
55502200	M-16X1.5	.646	16.4	.433	11.0	61747370	50
55502210	M-20X1.5	.815	20.7	.512	13.0	61747380	50
55502220	M-25X1.5	1.091	27.0	.551	14.0	61747390	50
55502230	M-32X1.5	1.205	30.6	.551	14.0	61747400	25
55502240	M-32X1.5	1.319	33.8	.650	16.5	61747410	25
55502250	M-40X1.5	1.614	41.0	.670	17.0	61747420	25
55502260	M-50X1.5	1.827	46.4	.768	19.5	61747430	25
55502270	M-63X1.5	2.252	57.2	.787	20.0	61747440	25

SILVYN® ELW/ ELW-M

90° Angle Conduit Connectors for SILVYN® EL Conduit



Metric



SILVYN® ELW is an angled connector designed especially for use with the SILVYN® EL conduit to create a tight and secure seal. SILVYN® ELG is available in PG and Metric threads. The PG style is UL/CSA approved.



Technical Data:



Materials:

Body:

Clamping Seal:

Polypropylene

Polyamide



Color:

Gray



Protection:

IP 65



Temperature range:

-20°C to +60°C

SILVYN® ELW: PG Conduit Connectors

Part Number	Thread Type & Size	Conduit Outer Diameter		Thread Length		For SILVYN® EL Conduit	Standard Pack Size
		inches	mm	inches	mm		
55000680	PG-7	.579	14.7	.433	11.0	61747360	50
55000690	PG-9	.646	16.4	.413	10.5	61747370	50
55000700	PG-11	.815	20.7	.531	13.5	61747380	50
55000710	PG-13	.815	20.7	.531	13.5	61747380	50
55000720	PG-16	1.091	27.7	.669	17.0	61747390	50
55000730	PG-21	1.205	30.6	.531	13.5	61747400	50
55000740	PG-29	1.319	33.5	.728	18.5	61747410	25
55000750	PG-36	1.614	41.0	.709	18.0	61747420	25

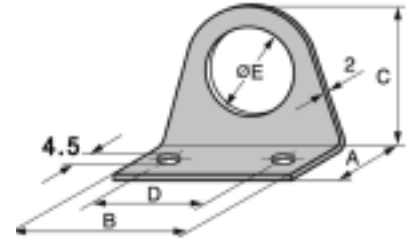
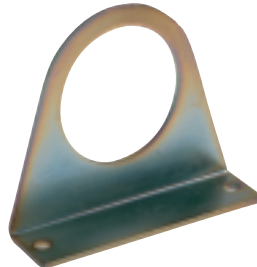
SILVYN® ELW-M: Metric Conduit Connectors

Part Number	Thread Type & Size	Conduit Outer Diameter		Thread Length		For SILVYN® EL Conduit	Standard Pack Size
		inches	mm	inches	mm		
55502300	M-12X1.5	.579	14.6	.433	11.0	61747360	50
55502310	M-16X1.5	.646	16.4	.433	11.0	61747370	50
55502320	M-20X1.5	.815	20.7	.512	13.0	61747380	50
55502330	M-25X1.5	1.091	27.0	.551	14.0	61747390	50
55502340	M-32X1.5	1.205	30.6	.551	14.0	61747400	50
55502350	M-32X1.5	1.319	33.8	.650	16.5	61747410	50
55502360	M-40X1.5	1.614	41.0	.670	17.0	61747420	25

Conduit Connectors for SILVYN® FD-PU and SILVYN® FPS Conduit

The SILVYN® LKI is a swivel connector designed to allow the conduit to rotate freely without damage to the conduit or the connection. It is tension and vibration resistant, providing a high quality connection between the protective conduit and the machine.

The SILVYN® LKI is for use with both the SILVYN® FPS and SILVYN® FD-PU. The SILVYN® BW is a special mounting bracket to be used with the SILVYN LKI to provide the proper sealing protection. Locknuts are available in the SKINTOP® GMP-GL Series (Page 498).



Technical Data:

Materials:	Polypropylene	Color:	Gray
Temperature range:	-10° C to +110° C	Protection:	IP 54

SILVYN® LKI: PG Conduit Connectors

Part Number	Thread Type & Size	Conduit Outer Diameter		Thread Length		For SILVYN® FPS Conduit	For SILVYN® FD-PU Conduit	Standard Pack Size
		inches	mm	inches	mm			
55000000	PG-7	.394	10	.394	10	61711550	64453662	50
55000010	PG-9	.551	14	.394	10	61711590	64453672	50
55000020	PG-11	.669	17	.394	10	61711630	64453682	50
55000030	PG-13	.748	19	.394	10	61711670	64453692	50
55000040	PG-16	.827	21	.433	11	61711710	64453702	50
55000050	PG-21	1.063	27	.433	11	61711750	64453712	25
55000060	PG-29	1.417	36	.472	12	61711790	64453721	25
55000070	PG-36	1.772	45	.472	12	61711830	64453731	25
55000090	PG-48	2.205	56	.591	15	61711910	64453751	10

SILVYN® LKI-M: Metric Conduit Connectors

Part Number	Thread Type & Size	Conduit Outer Diameter		Thread Length		For SILVYN® FPS Conduit	For SILVYN® FD-PU Conduit	Standard Pack Size
		inches	mm	inches	mm			
55501400	M-12X1.5	.394	10	.394	10	61711550	64453612	50
55501410	M-16X1.5	.551	14	.394	10	61711590	64453672	50
55501420	M-20X1.5	.669	17	.394	10	61711630	64453682	50
55501430	M-25X1.5	.827	21	.433	11	61711710	64453702	50
55501440	M-32X1.5	1.063	27	.472	12	61711750	64453712	25
55501450	M-40X1.5	1.417	36	.472	12	61711790	64453721	25
55501460	M-50X1.4	1.772	45	.472	12	61711830	64453731	25
55501470	M-63X1.5	2.205	56	.591	15	61711910	64453751	10

SILVYN® BW: PG Brackets

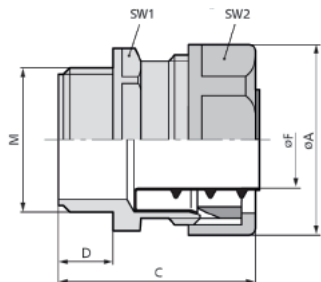
Part Number	Thread Type & Size	A		B		C		D		E		Standard Pack Size
		inches	mm	inches	mm	inches	mm	inches	mm	inches	mm	
55000540	PG-16	.787	20	1.969	50	1.496	38	1.575	40	.906	23.0	25
55000550	PG-21	.787	20	2.362	60	1.850	47	1.969	50	1.142	29.0	25
55000560	PG-29	.787	20	2.756	70	2.244	57	2.362	60	1.476	37.5	25
55000570	PG-36	.787	20	3.150	80	2.638	67	2.756	70	1.870	47.5	25

SILVYN® USK/ USK-M



Conduit Connectors for SILVYN® FD-PU and SILVYN® FPS Conduit

The SILVYN® USK is specially designed to lock in the conduit and prevent pullout and twists that can be encountered during continuous flexing applications. It is tension and vibration resistant providing a high quality connection between the protective conduit and the machine. The SILVYN® USK is for use with both the SILVYN® FPS and SILVYN® FD-PU. Locknuts available in the SKINTOP® GMP-GL Series (Page 498).



Technical Data:

Materials: Polypropylene

Temperature range: -10°C to +110°C

Color: Gray

Protection: IP 65

SILVYN® USK: PG Conduit Connectors

Part Number	Thread Type & Size	Conduit Outer Diameter		Thread Length		For SILVYN® FPS Conduit	For SILVYN® FD-PU Conduit	Standard Pack Size
		inches	mm	inches	mm			
52005810	PG-7	.394	10	.394	10	61711550	64453662	50
52005820	PG-9	.551	14	.394	10	61711590	64453672	50
52005830	PG-11	.669	17	.394	10	61711630	64453682	50
52005840	PG-13	.748	19	.394	10	61711670	64453692	50
52005850	PG-16	.827	21	.433	11	61711710	64453702	50
52005860	PG-21	1.063	27	.433	11	61711750	64453712	25
52005870	PG-29	1.417	36	.472	12	61711790	64453721	25
52005880	PG-36	1.772	45	.472	12	61711830	64453731	25
52005900	PG-48	2.205	56	.591	15	61711910	64453751	10

SILVYN® USK-M: Metric Conduit Connectors

Part Number	Thread Type & Size	Conduit Outer Diameter		Thread Length		For SILVYN® FPS Conduit	For SILVYN® FD-PU Conduit	Standard Pack Size
		inches	mm	inches	mm			
55501300	M-10X1.5	.394	10	.394	10	61711550	64453662	50
55501310	M-12X1.5	.551	14	.472	12	61711590	64453672	50
55501320	M-16X1.5	.669	17	.472	12	61711630	64453682	50
55501330	M-20X1.5	.827	21	.512	13	61711710	64453702	50
55501340	M-25X1.5	1.063	27	.512	13	61711750	64453712	25
55501350	M-32X1.5	1.417	36	.591	15	61711790	64453721	25
55501360	M-40X1.5	1.772	45	.591	15	61711830	64453731	25
55501370	M-50X1.5	2.205	56	.630	16	61711910	64453751	10

SILVYN® US MS-DR



Brass Sealing Ring for SILVYN®-AS & EDU-AS Conduit

SILVYN® US MS-DR is designed for use with the SILVYN® US connector when combined with the SILVYN® AS or SILVYN® EDU-AS conduit at temperatures above 100°C. This ensures proper grounding, as well as a potential equalization when using metal conduit.



Technical Data:

Materials:	Brass	Color:	Brass
Temperature range:	Above 100°C		

SILVYN® US MS-DR: Brass Sealing Ring

Part Number	Thread Type & Size	Thread Type & Size	Standard Pack Size
61808168	PG-7	M-10 X 1.0	50
61808169	PG-9	M-12 X 1.5	50
61808170	PG-11	M-16 X 1.5	50
61808180	PG-13	-	50
61808190	PG-16	M-20 X 1.5	50
61808200	PG-21	M-25 X 1.5	25
61808201	PG-29	M-32 X 1.5	25
61808202	PG-36	M-40 X 1.5	20
61808204	PG-48	M-50 X 1.5	10

