

EPIC®

14



EPIC® Circular Connectors

NEW

EPIC® CIRCON LS1 SERIES

Technical Data	407
Straight Panel Mount Inlet with Male Contacts (Style A1)	408
Angled Rotatable Panel Mount Inlet with Male Contacts (Style A3)	409
Straight Panel Mount Socket with Male Contacts & Locknut (Style G5)	409
Cable Connector with Female Contacts (Style D6)	410
Panel Mount Socket with Female Contacts (Style A6)	410
Cable Coupler with Male Contacts (Style F6 & F7)	410
Tools & Accessories	411
Applications with Servo Cables	412

NEW

EPIC® CIRCON M23 SERIES

Technical Data	413
Insert Configurations	414
Contacts	414
Straight Panel Mount Base (Style A1)	415
Angled Panel Mount Base (Style A3)	415
Cable Coupler with Flange (Style F7)	415
Cable Connector (Style D6)	415
Cable Coupler (Style F6)	416
Front Wall Mounting with Locknut or M25 x 1.5 Thread Mount (Style G5)	416
Rear Wall Mounting (Style G6)	416
Rear Wall Mounting (Style B1)	417
Rear Wall Mounting (Style B2)	417
Curved Surface Front Mount (Style O1)	417
Tools & Accessories	418
Applications with Servo Cables	419

EPIC® ZYLIN R 3.0 SERIES

Technical Data	420
Cross Reference	420
Accessories	420
Model D6 Cable Connector	420
Model F6 Cable Connector	421
Model A Panel Mount Base: Front Wall Mounting	421
Model B1 Panel Mount Base: Inside of Panel Mounting	422
Model B2 Panel Mount Base: Inside of Panel Mounting	422
Model G1 Panel Mount Base: Inside of Panel with Locknut	422

EPIC® Circular Connectors

NEW

EPIC® EAB & EAC SERIES (5015)

Key Features	423
Technical Data	424
Creating a Part Number	425
Insert Configuration	426
Wall Mount Receptacles	427
Box Mount Receptacles	427
Cable Coupler Receptacles	428
Straight Plug Connector	429
Right Angle Connector	430
Accessories	431
Tools	432
Finding the Right Cable	433

NEW

EPIC® EPT SERIES (26482)

Key Features	434
Technical Data	435
Creating a Part Number	436
Insert Configuration	437
Wall Mount Receptacles	438
Box Mount Receptacles	439
Cable Coupler Receptacles	440
Straight Plug Connector	441
Accessories	442
Tools	443
Finding the Right Cable	444

Quick Select Chart

	# of Contacts	Contact Configuration	European DIN Style			North American MIL Style	
			LS1 Series	M23 Series	Zylin R3.0 Series	EPT Series	EAB/EAC Series
Number of Contacts and Contact Configuration	2	2					X
	3	3				X	X
	4	4					X
	5	5				X	X
	6	5+PE	X				
	6	6		X		X	X
	7	7		X		X	X
	8	3+PE+4	X				
	8	8				X	
	9	8+1		X			
	9	9		X			
	10	10				X	X
	12	8+4				X	
	12	12		X			
	14	14					X
	15	14+1				X	
	16	14+2					X
	16	16		X		X	
	17	17		X			X
	18	18				X	
	19	19				X	X
	21	21			X	X	
23	22+1				X		
24	24					X	
26	26			X	X	X	
37	37					X	
41	41				X		
55	55				X		
Max. Rated Voltage	50 volts			X			
	60 volts				X		
	100 volts			X			
	150 volts			X			
	200 volts						X
	500 volts						X
	600 volts	X				X	
	900 volts						X
1000 volts					X		
Max. Rated Current	7 amps			X			
	7.5 amps				X		
	13 amps				X		X
	14 amps			X			
	22 amps	X					
	23 amps						X
46 amps						X	
Termination Type/ Wire Size (AWG)	Solder			X	X		
	Crimp	X		X		X	X
	24 to 20					X	
	24 to 18	X		X	X		
	20 to 16					X	
	18 to 16						X
	20 to 14	X					
	18 to 14			X			
14 to 12						X	
8 AWG						X	
Page Number			407	413	420	434	423

EPIC® Circular Connectors

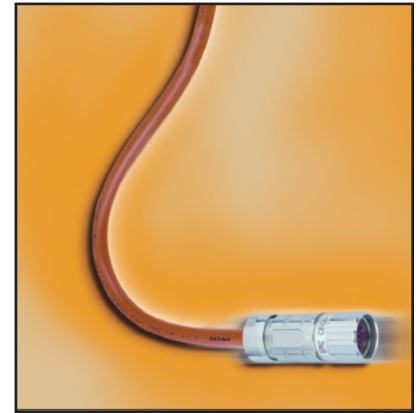
CIRCON LS1 Series



The EPIC® LS1 connectors have many inherent features which offer application advantages and provide significant benefits. These features make it one of the most application friendly connectors available, and insure quick and easy assembly, high reliability, and long, uninterrupted service life in tough industrial environments.

Key features include:

- Rugged nickel-plated, die-cast zinc body
- Positive vibration protection for use with motor drives and moving assemblies
- Integral EMC cable gland provides strain-relief, IP67/68 protection, and 360° shielding
- Identification marking field and optional color marking clips can be used to provide positive identification and visual differentiation in multiple connector installations.



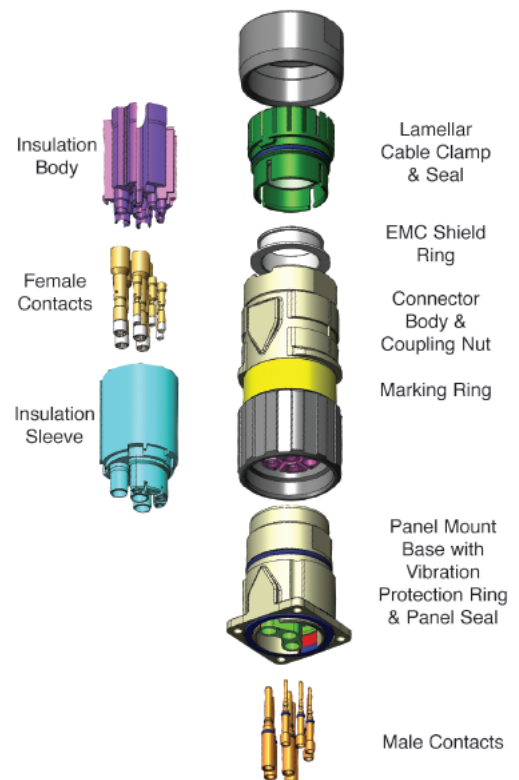
Equipment Description

EPIC® LS1 Connectors are available in five housing arrangements and two contact configurations. Common to all arrangements are a rugged nickel plated zinc body, plastic contact insulation body and sleeve, and gold plated electrical contacts (included with the connector part number). Cable mounted arrangements also include an integral EMC shield ring and cable clamp and seal. The figure to the right shows the general construction of these connectors.

These connectors are offered with a 5+PE contact configuration for power distribution (5 contacts plus ground rated at 630 volts and 22 amps), and a 3+PE+4 contact configuration for mixed power and signal requirements for servo motor with brake and feedback applications (3 contacts plus ground rated 630 volts and 22 amps and 4 contacts rated 250 volts and 7 amps). Used in combination, they connect one flexible cable with another (cable coupler) or one flexible cable to fixed wiring on a machine (appliance coupler).

TECHNICAL DATA

# of Contacts:	5+PE, 3+PE+4
Rated Voltage:	VDE: 630V (2mm contacts) 250V (1mm contacts)
	UL: 600V
Rated Current:	22 amps (2mm contacts) 7 amps (1mm contacts)
Impulse Voltage:	6kV (2mm contacts) 4kV (1mm contacts)
Contact Resistance:	<5m Ohms
Mating Cycles:	500
Temperature Range:	-25°C to +125°C
Protection Class:	IP67/68 (10h/1m)
Wire Gauge (Crimp):	<u>2 mm contacts:</u> 0.5 to 2.5 mm ² (20-14 AWG) <u>1 mm contacts:</u> 0.14 to 1.0 mm ² (24-18 AWG)
Cable Diameter:	7.5 to 15.5 mm
Materials:	Housing: Nickel Plated Zinc (Die Cast) Insulation Body: PA, PBT, UL94 V-0 Contacts: Gold plated copper alloy Gaskets & Seals: FPM
Standards:	DIN EN 61984
Approvals:	



EPIC® Circular Connectors

CIRCON LS1 Series

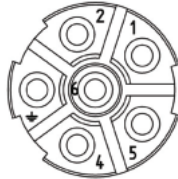


5+PE

Male Insert



Female Insert



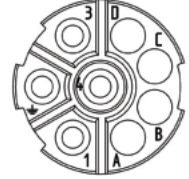
View from contact side

3+PE+4

Male Insert



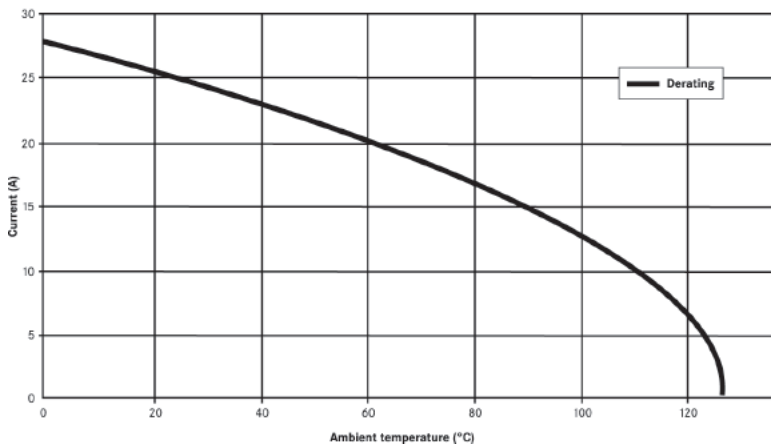
Female Insert



View from contact side

Derating Curve

Basic and derating curve LS-1. 5+PE, 2,5 mm²
Female hyper boloid



Wire Gauge	Max. Current (A) According to UL	
	5+PE	3+PE+4
2mm Contacts		
AWG 14	22	22
AWG 18	13	13
AWG 20	9	9
AWG 22	5	5
1mm Contacts		
AWG 18	-	7
up to AWG 26	-	1

STRAIGHT PANEL MOUNT INLET WITH MALE CONTACTS (STYLE A1)

5+PE

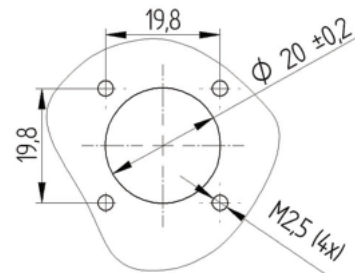
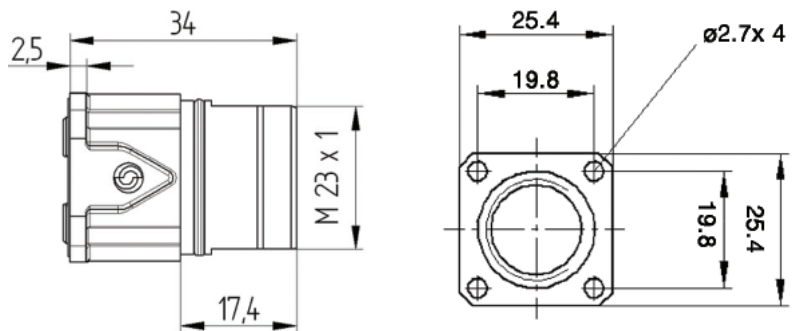


Part Number
76003000

3+PE+4



Part Number
76004000



Male Contacts (Spare Parts)

Part #	Description	Pack Size
74033001	0.14 - 1.0 mm ²	10
74033000	0.14 - 1.0 mm ²	100
74033101	0.50 - 2.5 mm ²	10
74033100	0.50 - 2.5 mm ²	100

EPIC® Circular Connectors

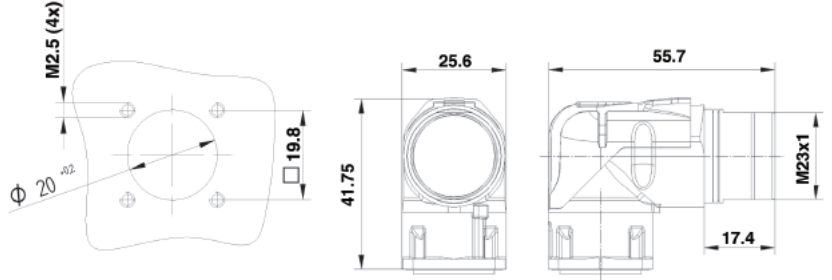
CIRCON LS1 Series



ANGLED ROTATABLE PANEL MOUNT INLET WITH MALE CONTACTS (STYLE A3)

5+PE

3+PE+4



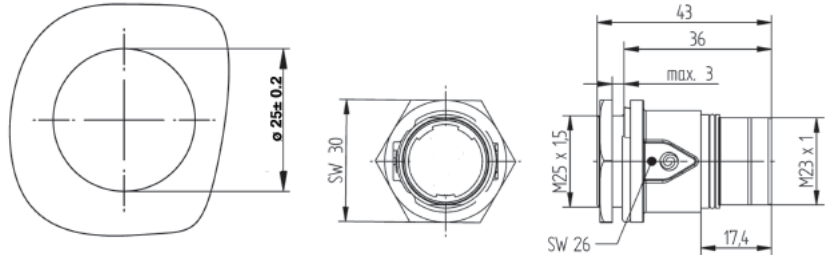
Part Number
44420058

Part Number
44420056

STRAIGHT PANEL MOUNT SOCKET WITH MALE CONTACTS & LOCKNUT (STYLE G5)

5+PE

3+PE+4



Part Number
76153000

Part Number
76154000

CABLE CONNECTOR WITH FEMALE CONTACTS (STYLE D6)

Short Body

Standard Body

5+PE

3+PE+4

5+PE

3+PE+4

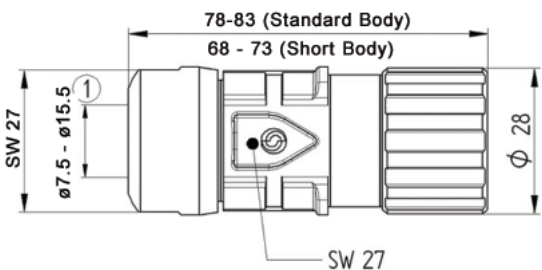


Part Number
76123100

Part Number
76124100

Part Number
76123000

Part Number
76124000



Female Contacts (Spare Parts)

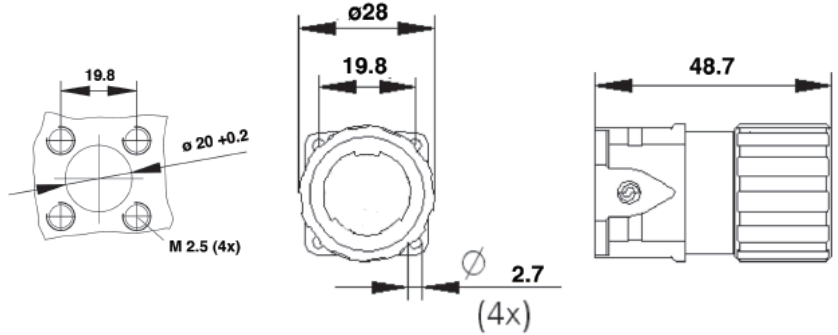
Part #	Description	Style	Pack Size
74033501	0.14 - 1.0 mm ²	Slot	10
74033500	0.14 - 1.0 mm ²	Slot	100
74034501	0.14 - 1.0 mm ²	Hyper boloid	10
74034500	0.14 - 1.0 mm ²	Hyper boloid	100
74034601	0.50 - 2.5 mm ²	Hyper boloid	10
74034600	0.50 - 2.5 mm ²	Hyper boloid	100

PANEL MOUNT SOCKET WITH FEMALE CONTACTS (STYLE A6)

5+PE



3+PE+4



Part
Number

76083000

Part
Number

76084000

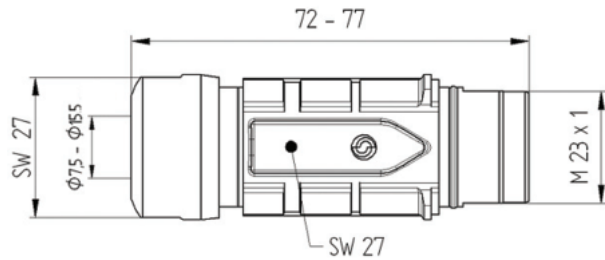
CABLE COUPLER WITH MALE CONTACTS (STYLE F6 & F7)

Style F6

5+PE



3+PE+4



Part
Number

76133000

Part
Number

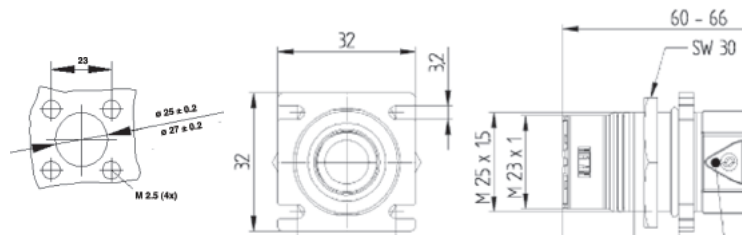
76134000

Style F7

5+PE



3+PE+4



Part
Number

76143000

Part
Number

76144000

Male Contacts (Spare Parts)

Part #	Description	Pack Size
74034001	0.14 - 1.0 mm ²	10
74034000	0.14 - 1.0 mm ²	100
74034101	0.50 - 2.5 mm ²	10
74034100	0.50 - 2.5 mm ²	100

EPIC® Circular Connectors

CIRCON LS1 Series

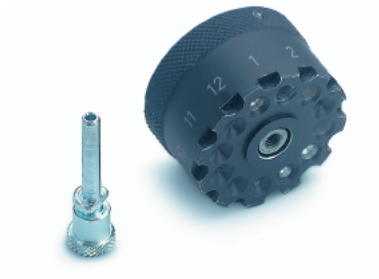


TOOLS & ACCESSORIES



Crimp Tool
0.14 - 6.0 mm²

Part Number
11148000



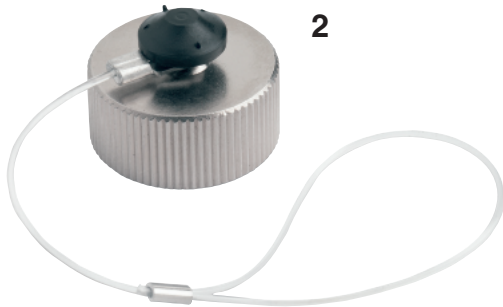
Locator

Part Number
11148300



Removal Tool
Style A1, G5

Part #	Description
75017400	1 mm Contacts
75017500	2 mm Contacts



Metal Screw Cap

Style	Part #	For Housing
2	75018310	Style A1, A3, D6, F6, F7, G5



Plastic Protection Cap

Part #	Description
75007710	Style D6
75007810	Style A1, A6, F6, F7, G5



Yellow Marking Rings

Part Number
75013410



Red Marking Rings

Part Number
75013110



Blue Marking Rings

Part Number
75013210



Green Marking Rings

Part Number
75013310



Transparent Marking Rings

Part Number
75013010

Application with OLFLEX® Servo Cables



Stationary Applications

Cable Series	Use with LS1 (5+PE)		Use with LS1 (3+PE+4)	
	Part Number	Conductor Configuration	Part Number	Conductor Configuration
OLFLEX® SERVO 709 CY UL/CSA/CE	0038010	16 AWG/4c	0038021	16 AWG/4c + 2pr 19
	0038011	14 AWG/4c	0038022	14 AWG/4c + 2pr 18
OLFLEX® SERVO 700 CE	-	-	0036145	16 AWG/4c + 2pr 19
	-	-	0036150	14 AWG/4c + 2pr 19
OLFLEX® SERVO 700 CY CE	-	-	0036157	16 AWG/4c + 2pr 19
	-	-	0036158	14 AWG/4c + 2pr 19
OLFLEX® SERVO FD LK-SMS-FX5 UL/CSA/VDE/CE	0025700	16 AWG/4c	0025715	16 AWG/4c + 1pr 16
	0025701	14 AWG/4c	0025716	14 AWG/4c + 1 pr16

Continuous Flex Applications

Cable Series	Use with LS1 (5+PE)		Use with LS1 (3+PE+4)	
	Part Number	Conductor Configuration	Part Number	Conductor Configuration
OLFLEX® SERVO FD 750 P CE	-	-	36245	16 AWG/4c + 2pr 18
	-	-	36250	14 AWG/4c + 2pr 18
OLFLEX® SERVO FD 750 CP UL/CSA/CE	-	-	32322UL	16 AWG/4c + 2pr 17
OLFLEX® SERVO FD 755 P CE	-	-	36350	16 AWG/4c + 2pr 18
	-	-	36351	14 AWG/4c + 2pr 18
OLFLEX® SERVO FD 755 CP CE	-	-	36370	16 AWG/4c + 1pr 17
	-	-	36371	14 AWG/4c + 1pr 17
	-	-	36360	16 AWG/4c + 2pr 18
OLFLEX® SERVO FD LK-SMS-FX8 UL/CSA/VDE/CE	0027724	16 AWG/4c	0027718	16 AWG/4c + 1pr 16
	0027725	14 AWG/4c	0027719	14 AWG/4c + 1pr 16
OLFLEX® SERVO FD LK-INX UL/CSA/CE	-	-	7072404	16 AWG/4c + 2pr 19
	-	-	7072405	14 AWG/4c + 2pr 18

EPIC® Circular Connectors

CIRCON M23 Series



The M23 connectors have many inherent features which offer application advantages and provide significant benefits for the customer. These features make it one of the most application friendly connectors available, and insure quick and easy assembly, high reliability, and long, uninterrupted service life in tough industrial environments

Key features include:

- Rugged Nickel-plated, die-cast Zinc Body
- Positive vibration protection for use with motor drives and moving assemblies
- Integral EMC cable gland provides strain-relief, IP67/IP68 protection, and 360 degree shielding
- Identification marking field and unique color marking clips provide positive identification and visual differentiation in multiple connector installations.
- Color-coded keying rings insure correct mating selection in applications where several connectors are mounted in the same location.





Equipment Description

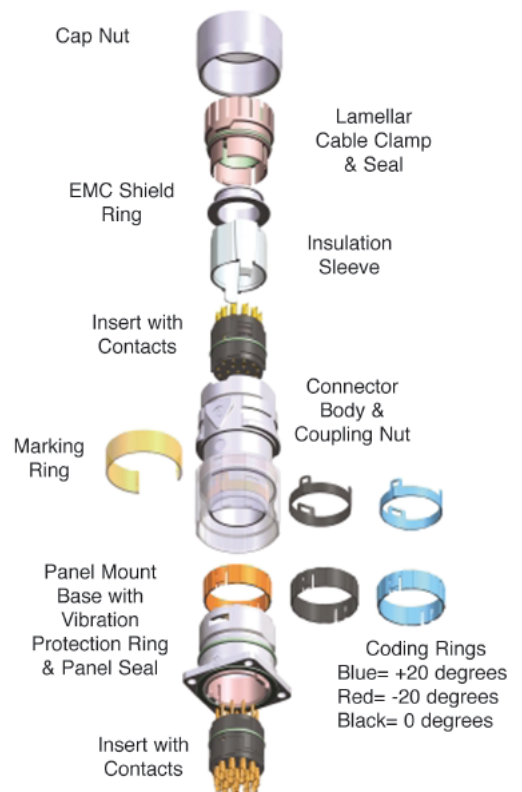
EPIC® CIRCON M23 Connectors are available in 3 housing arrangements that can accommodate 3 different insert keying positions. Inserts are offered in 7 contact configurations for mounting male or female, crimp or solder contacts. Common to all arrangements are a rugged nickel plated zinc body, plastic contact insulation body and sleeve, and gold plated electrical contacts. Cable mounted arrangements also include an integral EMC shield ring and cable clamp and seal. The figure to the right shows the general construction of these connectors.

The connectors are offered with insert configurations for 6, 7, 8+1, 9, 12, 16, and 17 crimp or solder contacts in either a clockwise or counter-clockwise orientation. Used in combination, they connect one cable with another (cable coupler) or a cable to fixed wiring in a control enclosure or on a machine, instrument, or servo motor.

TECHNICAL DATA

Technical Specifications

# of Contacts:	6, 7, 8+1, 9, 12, 16, 17
Rated Voltage:	6,7,8+1,9 poles - 150 volts 12 & 16 poles - 100 volts 17 poles - 50 volts
Rated Current:	6 & 7 pole: 14 amps; 8+1, 9, 12, 16, 17 pole: 7 amps
Impulse Voltage:	0.8 kV
Contact Resistance:	<5m Ohms
Mating Cycles:	100 minimum
Temperature Range:	-25°C to +125°C
Protection Class:	IP67/68 (10h/1m)
Wire Gauge: Crimp	1mm : 0.14-1.0mm ² (24-18 AWG) 2mm : 1.0-2.5mm ² (18-14 AWG)
Solder	1mm : up to 1mm ² (18 AWG) 2mm : up to 2.5mm ² (14 AWG)
Cable Diameter:	7.0 to 13.5 mm
Materials:	Housing: Nickel Plated Zinc Insert: PA, PBT, UL94 V-0 Contacts: gold plated copper alloy Gaskets & Seals: FPM
Standards:	DIN EN 61984
Approvals:	 



EPIC® Circular Connectors

CIRCON M23 Series



Insert Configurations

Connector inserts will accept both male and female contacts. A complete connection requires one E-Type insert and one P-Type insert

E-Type Insert (Clockwise numbered contacts viewed from the mating side)	73002766 without contacts	73002754 without contacts	73002742 without contacts	73002730 without contacts	73002718 without contacts	73002706 without contacts	73008500 without contacts
# of Contacts	6	7	8+1	9	12	16	17
P-Type Insert (Counter-Clockwise numbered contacts viewed from the mating side)							
	73002760 without contacts	73002748 without contacts	73002736 without contacts	73002724 without contacts	73002712 without contacts	73002700 without contacts	73008000 without contacts
	73002762 with male solder	73002750 with male solder	73002738 with male solder	73002726 with male solder	73002714 with male solder	73002702 with male solder	73028000 with male solder
73002764 with female solder	73002752 with female solder	73002740 with female solder	73002728 with female solder	73002716 with female solder	73002704 with female solder	73018000 with female solder	

Contacts

Part Number	Description	Pack Size
72400000	M23 Gold Male Crimp 1mm Contact: 0.14 -1.0 mm ² (26 - 18 AWG)	100
72402000	M23 Gold Male Solder Contact: up to 1.0 mm ² (18 AWG)	100
72402600	M23 Gold Female Solder Contact: up to 1.0 mm ² (18 AWG)	100
74200600	M23 Gold Female Crimp Contact: 0.14 -1.0 mm ² (26 -18 AWG)	100
74034500	M23/LS1 HYP Gold Female Crimp Contact D6: 0.14 - 1.0 mm ² (26 -18 AWG)	100
72401600	M23 Gold Female Crimp 2 mm Contact: 1.0 - 2.5 mm ² (18 - 14 AWG)	100
72404000	M23 Gold Female Solder Contact 2mm up to 2.5 mm ² (14 AWG)	100
72401000	M23 Gold Male Crimp 2mm Contact: 1.0 - 2.5 mm ² (18 - 14 AWG)	100
72403000	M23 Gold Male Solder 2 mm Contact: up to 2.5 mm ² (14 AWG)	100

EPIC® Circular Connectors

CIRCON M23 Series



STRAIGHT PANEL MOUNT BASE (STYLE A1)

Keying "N"

Keying "-20"

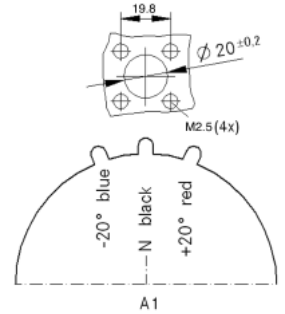
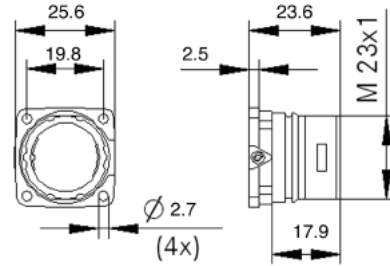
Keying "+20"



Part Number
72004000

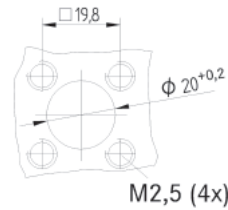
Part Number
72004100

Part Number
72004200

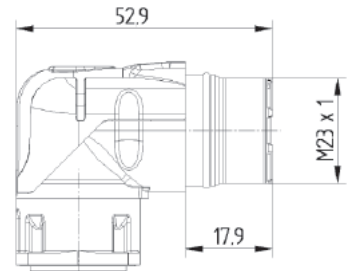
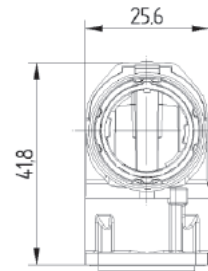


(All dimensions above are in mm)

ANGLED PANEL MOUNT BASE (STYLE A3)

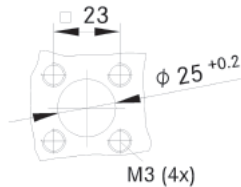


Part Number
44420055

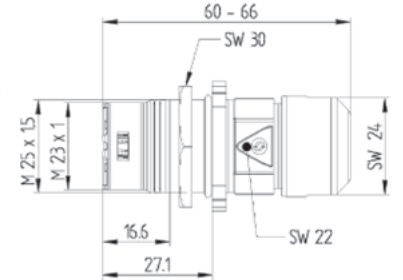
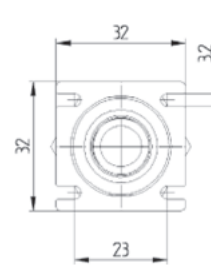


(All dimensions above are in mm)

CABLE COUPLER WITH FLANGE (STYLE F7)



Part Number	Max. Cable O.D.
44420009	7 - 10 mm
44420011	9.5 - 13.5 mm



(All dimensions above are in mm)

CABLE CONNECTOR (STYLE D6)

Keying "N"

Keying "-20"

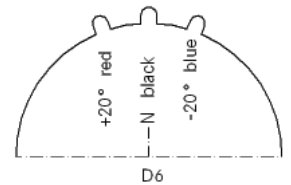
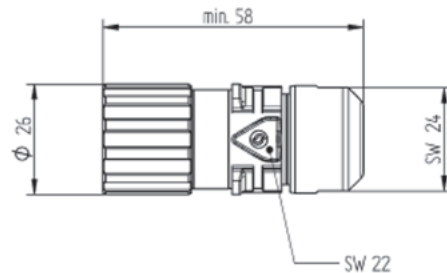
Keying "+20"



Part Number
44420037

Part Number
44420036

Part Number
44420038

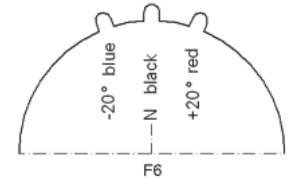
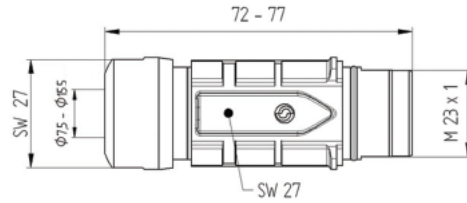


CABLE COUPLER (STYLE F6)

Keying "N"

Keying "-20"

Keying "+20"

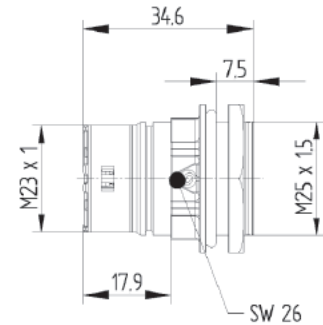
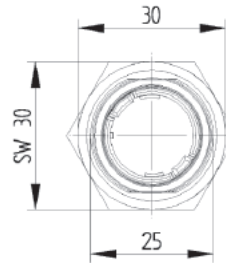
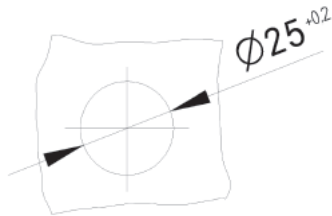


Part Number
44420040

Part Number
44420039

Part Number
44420041

FRONT WALL MOUNTING WITH LOCKNUT OR M25 X 1.5 THREAD MOUNT (STYLE G5)



Keying "N"

Keying "-20"

Keying "+20"

Part Number
44420046

Part Number
44420044

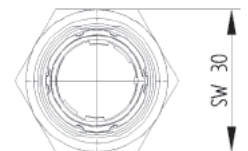
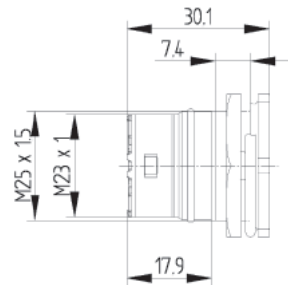
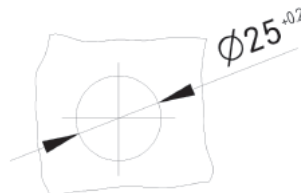
Part Number
44420048

REAR WALL MOUNTING (STYLE G6)



Keying "N"

Part Number
44420071

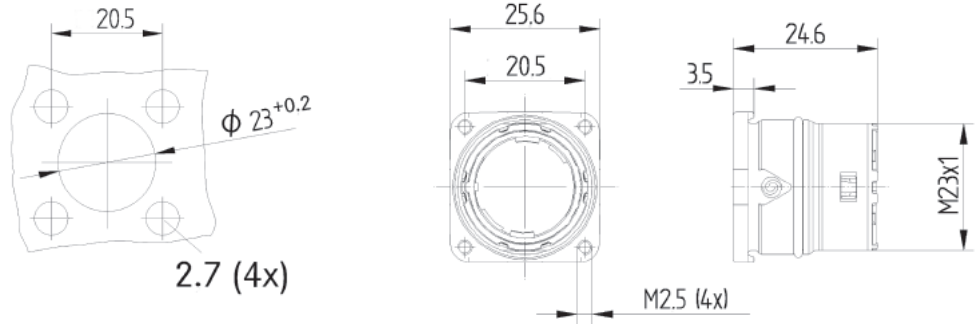


EPIC® Circular Connectors

CIRCON M23 Series



REAR WALL MOUNTING (STYLE B1)



Keying "N"

Keying "-20"

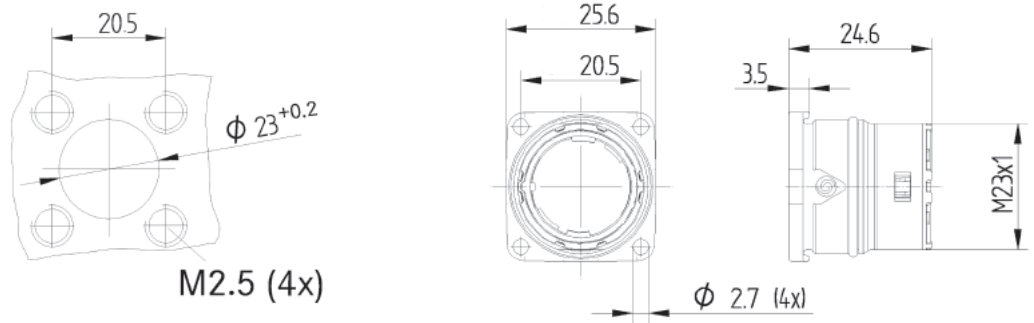
Keying "+20"

Part Number
44420024

Part Number
44420022

Part Number
44420026

REAR WALL MOUNTING (STYLE B2)



Keying "N"

Keying "-20"

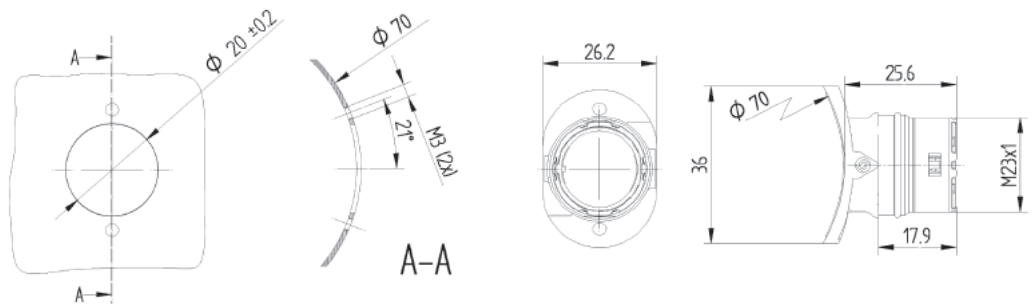
Keying "+20"

Part Number
44420050

Part Number
44420052

Part Number
44420035

CURVED SURFACE FRONT MOUNT (STYLE O1)



Mounting
ø 50mm

Mounting
ø 58mm

Mounting
ø 70mm

Mounting
ø 90mm

Part Number
44420083

Part Number
44420085

Part Number
44420087

Part Number
44420028

EPIC® Circular Connectors

CIRCON M23 Series



Crimp Tool
0.14 - 6.0 mm²

Part Number
11148000



Locator

Part Number
11148300



Removal Tool
Panel Base Insert:
Style A, B, G, O

Part Number
44420078



Metal Screw Cap

Style	Part #	For Housings
1	75018110	Style D, F, G
2	75018010	Style A, B, F7, O



Plastic Protection Cap

Style	Part #	For Housings
1	75007710	Style D6
2	75007810	Style A, B, F, G, O



Yellow Marking Rings

Part Number
44420098



Red Marking Rings

Part Number
44420100



Blue Marking Rings

Part Number
44420096



Green Marking Rings

Part Number
44420099



Transparent Marking Rings

Part Number
44420097

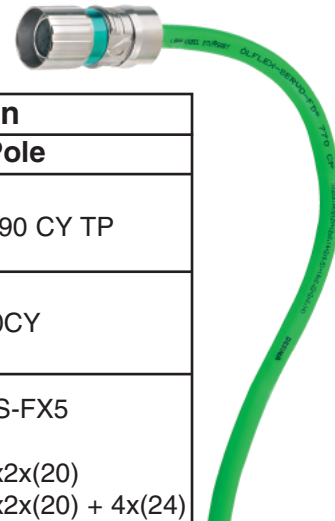
EPIC® Circular Connectors

CIRCON M23 Series

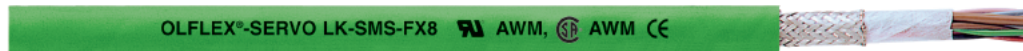


The CIRCON M23 connectors are ideal for use with industrial control and data cables, and servo feedback cables. Based on the specific application, a wide variety of cable/connector combinations is possible. The tables below provide a sampling of the possibilities.

Stationary/Flexible Applications

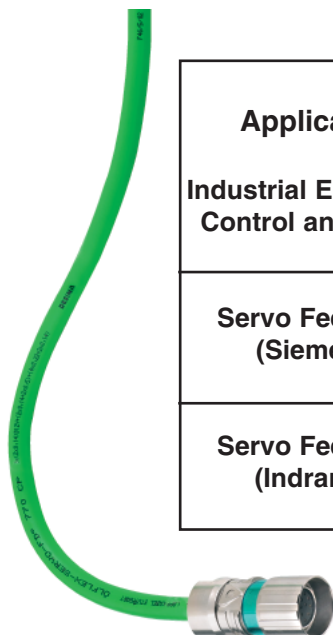


Application	Use With Connector Contact Configuration	
	6 & 7 Pole	8+1, 9, 12, 16, & 17 Pole
Industrial Equipment Control and Signal	OLFLEX® 190/190 CY	UNITRONIC® 190/190 CY/190 CY TP
	OLFLEX® 490P/490 CP	
	OLFLEX® 590P/590 CP	
	OLFLEX® SPIRAL 400P/540 P	UNITRONIC® 300/300CY
	OLFLEX® TC 600	
OLFLEX® Tray II		
Servo Feedback (Siemens)		OLFLEX® Servo LK-SMS-FX5 0025724 - 4x2x(22) + 4x(20) 0025725 - 3x2x(26) + 4x(26) + 1x2x(20) 0025726 - 3x2x(26) + 4x(26) + 1x2x(20) + 4x(24)



Continuous Flex Applications

Application	Use With Connector Contact Configuration	
	6 & 7 Pole	8+1, 9, 12, 16, & 17 Pole
Industrial Equipment Control and Signal	OLFLEX® FD 890/890 CY	UNITRONIC® FD 890
	OLFLEX® FD 891/891 CY	UNITRONIC® FD P
	OLFLEX® FD 890 P/890 CP	UNITRONIC® FD CP
	OLFLEX® FD 891 P/891 CP	UNITRONIC® FD CP (TP)
Servo Feedback (Siemens)		OLFLEX® SERVO FD LK-SMS-FX8 0027711 - 4x2x(22) + 4x(20) 0027713 - 3x2x(26) + 4x(26) + 1x2x(20) 0027714 - 3x2x(26) + 4x(26) + 1x2x(20) + 4x(24)
	Servo Feedback (Indramat)	

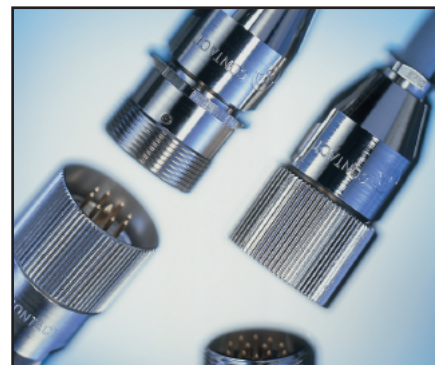


EPIC® Circular Connectors

ZYLIN R 3.0 Series

The Zylin R3.0 Series Circular Connectors is used as an alternative to the Zylin R2.5 Series connector when additional contacts are required.

Note: Parts are specified separately but sold assembled. Always use combination part number when ordering.



TECHNICAL DATA

Number of Contacts:	21, 26
Rated Voltage:	25V/ 60V AC/DC
Test Voltage:	1.5 kV, AC
Insulation:	B: corresponds to equipment used primarily in residential premises, sales or other professional environments, precision engineering workshops, laboratories, testing centers, hospitals, etc.
Rated Current:	7.5A
Temperature Range:	-40°C to 125°C
Protection Class:	IP 65 ... IP 67, mated, DIN 40050 dependent on cable gland
Wire Gauge:	Solder: up to 1 mm ²
Cable O.D. Range:	6.5 - 16 mm
Contact Resistance	<3 (mOhm)
Mating Cycles:	500 (higher mating cycles depends on the application)
Material:	
Housing:	Copper alloy, nickel plated
Insulation Body (Inserts):	Thermoplastic according to UL94 V-0
Gaskets:	Neoprene
Contacts:	Copper alloy, gold plated

CROSS REFERENCE TABLE

Always use
Combination
Part Number when
ordering

	21 CONTACTS		26 CONTACTS	
HOUSING:	INSERT	INSERT	INSERT	INSERT
Connector	40.200121	40.250121	40.200126	40.250126
20.2040AF	00009045	00008749	00008899	00008829
20.2050AF	00008854	00008779	00008822	00008979
Panel Mount Sockets				
20.2010AA	00008747	00008867	00008825	00008746
20.2020AA	00009082	00009135	00009700	00008978
20.2030AA	00010621	00010041	00008939	00009470
20.2060AA	00009371	00009057	00009894	00009005

ACCESSORIES

ANGLED HOUSING



METAL SCREW CAP



FLAT GASKET



SEALING RING



ASSEMBLY TOOL



Std Pack of 5: Metal Screw Cap • Flat Gasket • Angled Housing

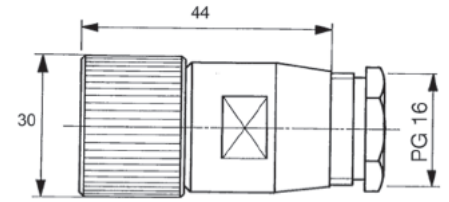
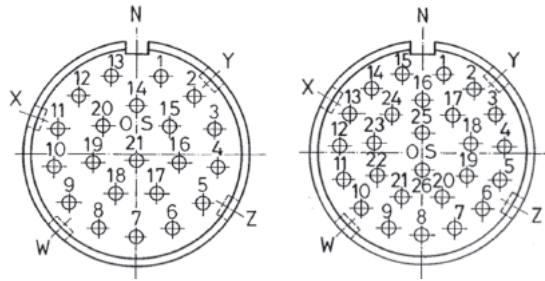
EPIC® Circular Connectors

ZYLIN R 3.0 Series

MODEL D6 CABLE CONNECTOR



202040AF



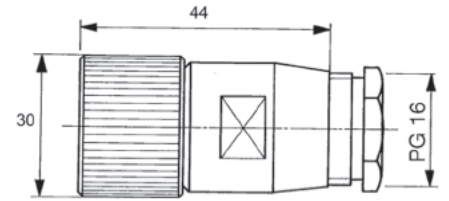
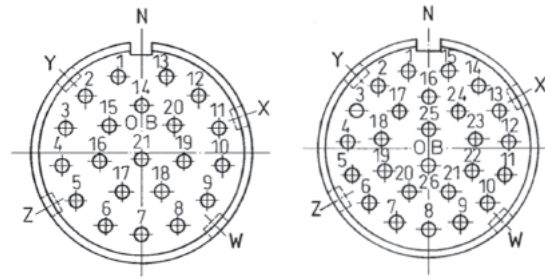
# of Contacts	Male Part #	Female Part #
21	00009045	00008749
26	00008899	00008829

Accessory Part Numbers:
 Metal Screw Cap: 50204121
 Assembly Tool: 50200800

MODEL F6 CABLE CONNECTOR



202050AF



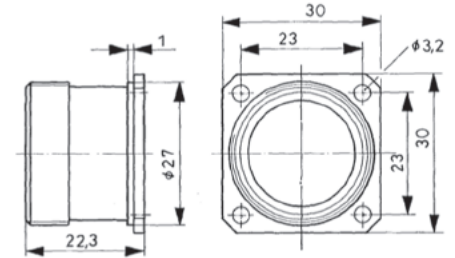
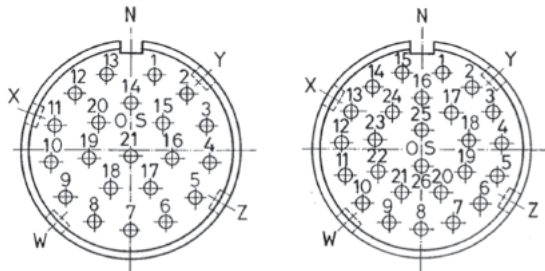
# of Contacts	Male Part #	Female Part #
21	00008854	00008779
26	00008822	00008979

Accessory Part Numbers:
 Metal Screw Cap: 50205121
 Assembly Tool: 50200800

MODEL A PANEL MOUNT BASE: FRONT WALL MOUNTING



202010AA



# of Contacts	Male Part #	Female Part #
21	00008747	00008867
26	00008825	00008746

Accessory Part Numbers:
 Flat Gasket: 50201203
 Metal Screw Cap: 50201120

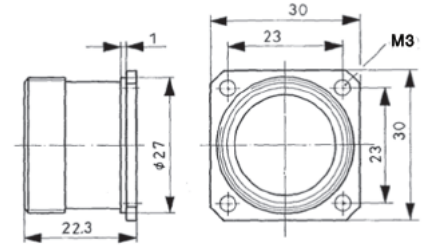
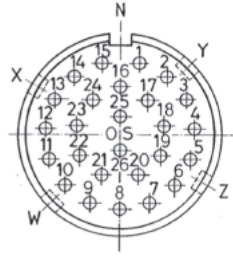
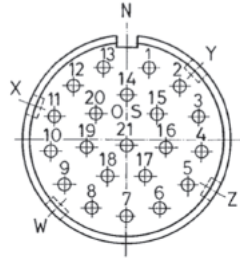
EPIC® Circular Connectors

ZYLIN R 3.0 Series

MODEL B1 PANEL MOUNT BASE: INSIDE OF PANEL MOUNTING



202020AA



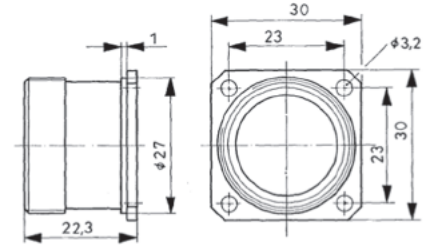
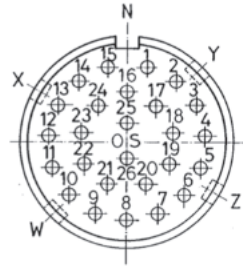
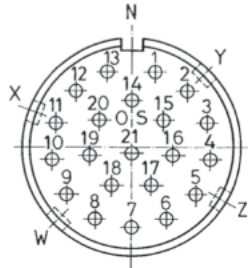
# of Contacts	Male Part #	Female Part #
21	00009082	00009135
26	00009700	00008978

Accessory Part Numbers:
 Flat Gasket: 50201203
 Metal Screw Cap: 50201120
 Angled Housing: 502012AC

MODEL B2 PANEL MOUNT BASE: INSIDE OF PANEL MOUNTING



202030AA



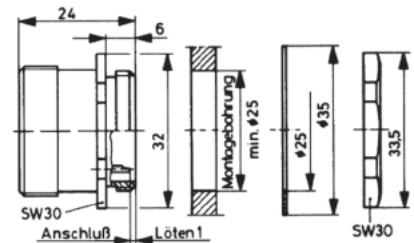
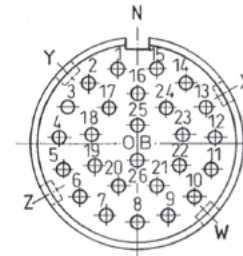
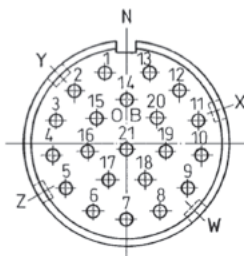
# of Contacts	Male Part #	Female Part #
21	00010621	00010041
26	00008939	00009470

Accessory Part Numbers:
 Metal Screw Cap: 50203120
 Flat Gasket: 50202203

MODEL G1 PANEL MOUNT BASE: INSIDE OF PANEL WITH LOCKNUT



202060AA



# of Contacts	Male Part #	Female Part #
21	00009371	00009057
26	00009894	00009005

Accessory Part Numbers:
 Sealing Ring: 50206204

EPIC® Circular Connectors

EAB & EAC Series (5015)

EPIC® EAB and EAC Series Connectors are available in four housing styles, eight housing sizes, and twelve contact configurations. Common to all arrangements are a rugged nickel plated aluminum alloy body with either threaded coupling (EAC) or bayonet coupling (EAB), thermoplastic rubber contact insert, and silver plated electrical contacts. Cable mounted arrangements are also available with an integral 360 degree EMC shield and cable clamp with environmental seal. The figure below shows the general construction of these connectors. All housings are available with either male pin or female socket contacts.

The connectors are offered with insert configurations from 3 to 37 crimp contacts. Used in combination, they connect one cable with another (cable coupler) or a cable to fixed wiring in a control enclosure or on a machine, robot, instrument, or servo motor.

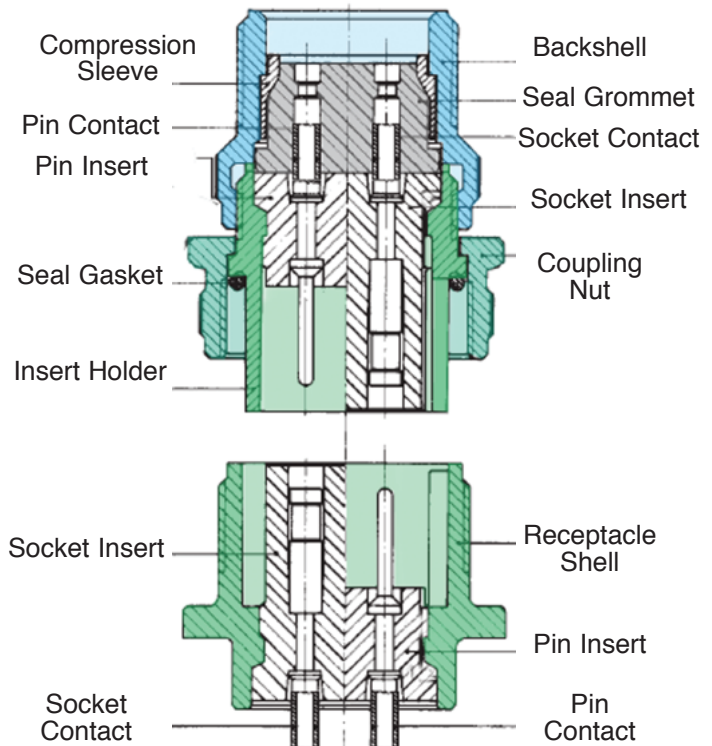
The new connectors incorporate many inherent features offering significant application advantages. These features make it one of the most application friendly connectors available, and insure quick and easy assembly, high reliability, and long, uninterrupted service life in tough industrial environments.



Key features include:

- Rugged Nickel-plated, Aluminum alloy body
- TPE insert material provides high degree of environmental and chemical resistance.
- Available backshell designs provide strain-relief, IP 67 protection, and 360 degree EMC shielding
- All materials used in these connectors are RoHS compliant.
- Standard crimp contacts provide easy field assembly and replacement.
- EAC Series are fully intermateable and interchangeable with connectors produced in accordance with MIL-C-5015.
- EAB Series uses a three-point Bayonet Coupling which provides positive vibration protection for use with motor drives and moving assemblies. They are fully intermateable and interchangeable with connectors produced in accordance with MIL-C-5015 (inserts) and VG95234 (housings).

Straight Plug Connector



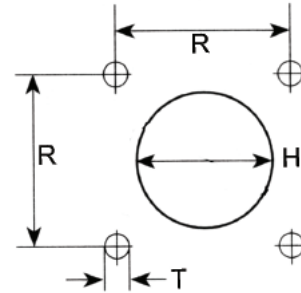
Box Mount Receptacle

EPIC® Circular Connectors

EAB & EAC Series (5015)

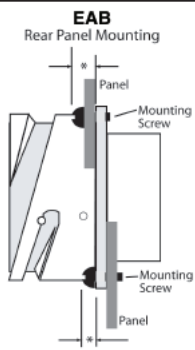
Number of Contacts	2 to 37			
Contact Termination	Crimp			
Contact Wire Range	Contact Size		Wire Gauge (AWG)	
	16		18, 16	
	12		14, 12	
	8		8	
Current Rating	Contact Size	Rated Amps	Test Current (a)	Voltage Drop (mV)
	16	13	20	21
	12	23	35	20
	8	46	60	12
Voltage Rating	Service Rating	Test Voltage AC (rms)	Max. Work Voltage	
			AC (rms)	DC
	Inst	1000	200	250
	A	2000	500	700
	D	2800	900	1250
Mating Cycles	500 minimum			
Jacketed Cables OD (Class J&S)	0.08 to 1.10 inches (2.0 to 28 mm) depending on housing size			

Panel Cut-out

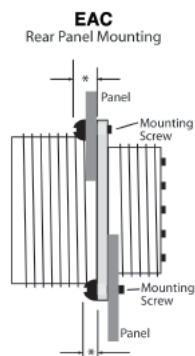


Dimensions in inches (mm)				
Shell Size	H	R	T	G
10 SL	.650	.717	.130	0.728
	(16.5)	(18.21)	(3.3)	(18.5)
14S	.774	.906	.130	0.980
	(19.7)	(23.0)	(3.3)	(24.9)
16S	.900	.969	.130	1.090
	(22.9)	(24.6)	(3.3)	(27.7)
16	.900	.969	.130	1.090
	(22.9)	(24.6)	(3.3)	(27.7)
18	1.028	1.063	.130	1.224
	(26.1)	(27.0)	(3.3)	(31.1)
20	1.150	1.157	.130	1.358
	(29.2)	(29.4)	(3.3)	(34.5)
22	1.276	1.252	.130	1.488
	(32.4)	(31.8)	(3.3)	(37.8)
24	1.402	1.374	.157	1.626
	(35.6)	(34.9)	(4.0)	(41.3)
28	1.650	1.563	.197	1.854
	(41.9)	(39.7)	(5.0)	(47.1)

Housing:	Nickel plated aluminum alloy
Contact Insert:	TPE Synthetic Rubber UL 94 V-0
Contact:	Copper alloy, silver plate per QQ-S-365
Gaskets & Seals:	TPE Synthetic Rubber UL94 V-0
Temperature Range:	-55°C to +125°C
Environmental Seal:	Ref MIL-C-5015 (MIL-STD 202/1344) (Class J & S IP67 equiv. mated)
RoHS Compliance:	Yes
Standards:	MIL-C-5015; QQ-S-365; VG95234 (EAB Series)



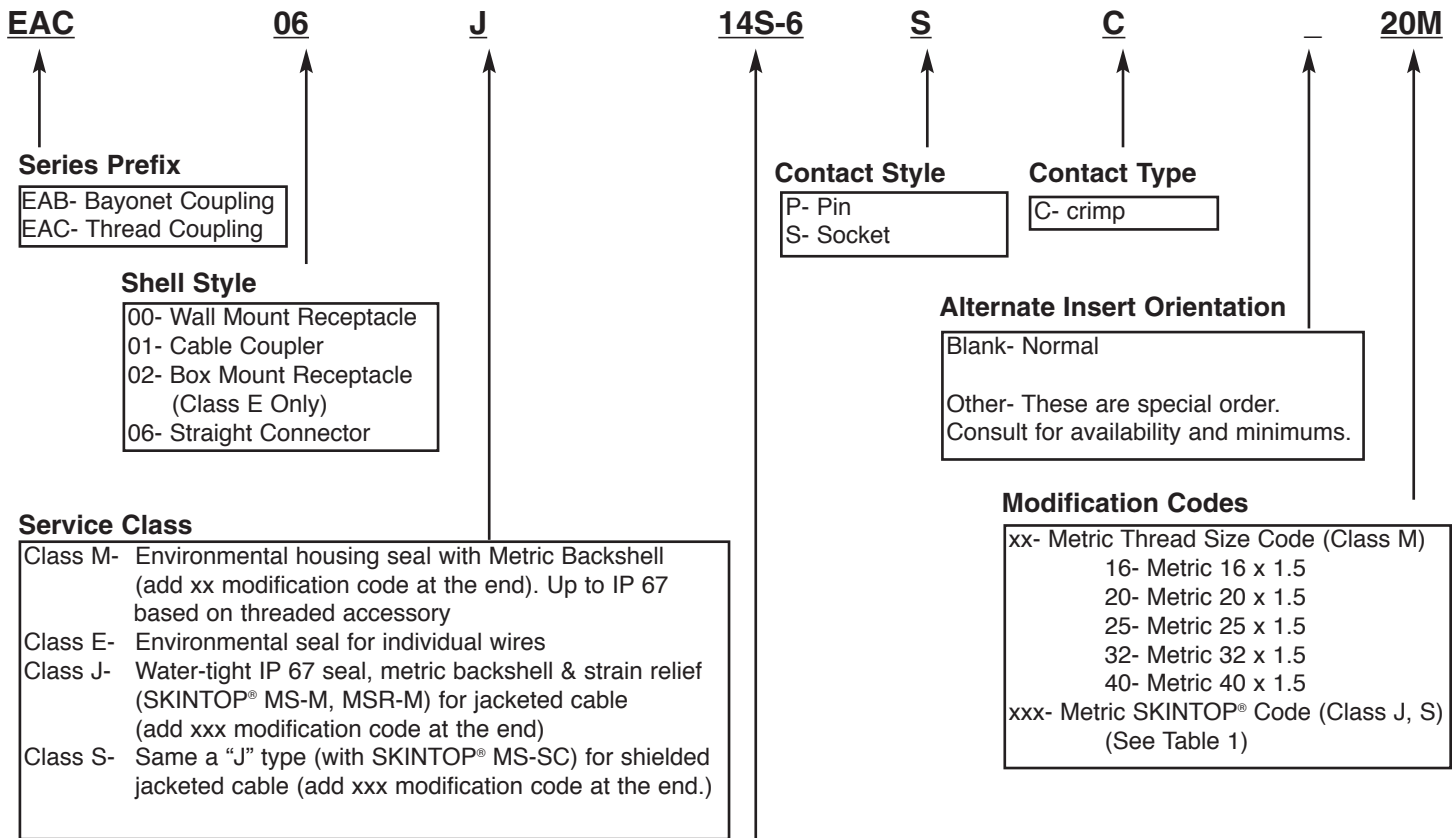
Front Panel Mounting



Shell Size	Maximum Panel Thickness- inches (mm)							
	EAB Series				EAB Series			
	Front Mount		Rear Mount		Front Mount		Rear Mount	
	Screw Height	With Backshell	Without Backshell	Screw + Panel	Screw Height	With Backshell	Without Backshell	Screw + Panel
10SL	.138 (3.5)	.1 (2.54)	.271 (6.88)	.305 (7.82)	.125 (3.18)	.1 (.254)	.271 (6.88)	.187 (4.75)
14S	.138 (3.5)	.1 (2.54)	.271 (6.88)	.305 (7.82)	.125 (3.18)	.1 (.254)	.271 (6.88)	.187 (4.75)
16S	.138 (3.5)	.1 (2.54)	.271 (6.88)	.305 (7.82)	.125 (3.18)	.1 (.254)	.271 (6.88)	.187 (4.75)
16	.138 (3.5)	.1 (2.54)	.271 (6.88)	.315 (8.0)	.125 (3.18)	.1 (.254)	.271 (6.88)	.125 (3.18)
18	.138 (3.5)	.1 (2.54)	.271 (6.88)	.305 (7.82)	.125 (3.18)	.1 (.254)	.271 (6.88)	.125 (3.18)
20	.138 (3.5)	.1 (2.54)	.271 (6.88)	.305 (7.82)	.125 (3.18)	.1 (.254)	.271 (6.88)	.125 (3.18)
22	.138 (3.5)	.1 (2.54)	.271 (6.88)	.305 (7.82)	.125 (3.18)	.1 (.254)	.271 (6.88)	.125 (3.18)
24	.197 (5.0)	.1 (2.54)	.271 (6.88)	.305 (7.82)	.125 (3.18)	.1 (.254)	.271 (6.88)	.187 (4.75)
28	.197 (5.0)	.1 (2.54)	.271 (6.88)	.315 (8.0)	.125 (3.18)	.1 (.254)	.271 (6.88)	.187 (4.75)

EPIC® Circular Connectors

EAB & EAC Series (5015)



Shell Size- Contact Arrangement Code

Code	Shell Size	# of Contacts	Oper Amps	Max. Volts
10SL-3	10	3	13	500
14S-5	14	5	113	200
14S-6	14	6	13	200
16S-1	16	7	13	500
18-1	18	10	13	(6) 200, (4) 500
20-27	20	14	13	500
20-29	20	17	13	500
28-21	28	37	13	500
16-10	16	3	23	500
20-4	20	4	23	900
22-22	22	4	46	500
24-10	24	7	46	500



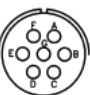



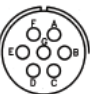

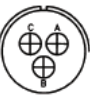


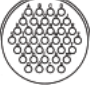
Metric SKINTOP® Selection (Table 1)

Code	Thread Size	Shell Size	SKINTOP® Type	Reference	Cable OD Range		Service Class
					mm	inches	
16M			MS-M	53112010	4.5 - 10	.177 - .394	J
16R	M16	10	MSR-M	53112110	2 - 7	.079 - .276	J
16S			MS-SC	53112620	4.5 - 9	.177 - .354	S
20M			MS-M	53112020	7 - 13	.276 - .512	J
20R	M20	14	MSR-M	53112120	5 - 10	.197 - .394	J
20S			MS-SC	53112630	7 - 12.5	.276 - .492	S
25M			MS-M	53112030	9 - 17	.354 - .669	J
25R	M25	16, 18	MSR-M	53112130	6 - 13	.236 - .512	J
25S			MS-SC	53112640	9 - 16.5	.354 - .650	S
32M			MS-M	53112040	11 - 21	.433 - .827	J
32R	M32	20, 22	MSR-M	53112140	7 - 15	.276 - .591	J
32S			MS-SC	53112650	11 - 21	.433 - .827	S
40M			MS-M	53112050	19 - 28	.748 - 1.102	J
40R	M40	24, 28	MSR-M	53112150	15 - 23	.591 - .906	J
40S			MS-SC	53112660	19 - 28	.748 - 1.102	S

EPIC® Circular Connectors

EAB & EAC Series (5015)

Connector inserts follow standard MIL-C-5015 configurations and are available with either all male or all female contacts.

Shell Size	Insert	No. of Contacts	Voltage Class	Contact Size			Series Offered	Shell Size	Insert	No. of Contacts	Voltage Class	Contact Size			Series Offered
				8	12	16						8	12	16	
10	 10SL-3	3	A			3	EAB Only	20	 20-4	4	D			4	BOTH
	 14S-5	5	Inst			5	EAB Only		 20-27	14	A			14	EAB Only
14	 14S-6	6	Inst			6	EAC Only	 20-29	17	A			17	Both	
	 16S-1	7	A			7	EAC Only	22	 22-22	4	A		4	EAC Only	
16	 16-10	3	A		3	EAB Only	24	 24-10	7	A		7	Both		
	 18-1	10	A = B, C, F, G Inst = BAL			10	EAC Only	28	 28-21	37	A			EAB Only	

Contact Size



16



12

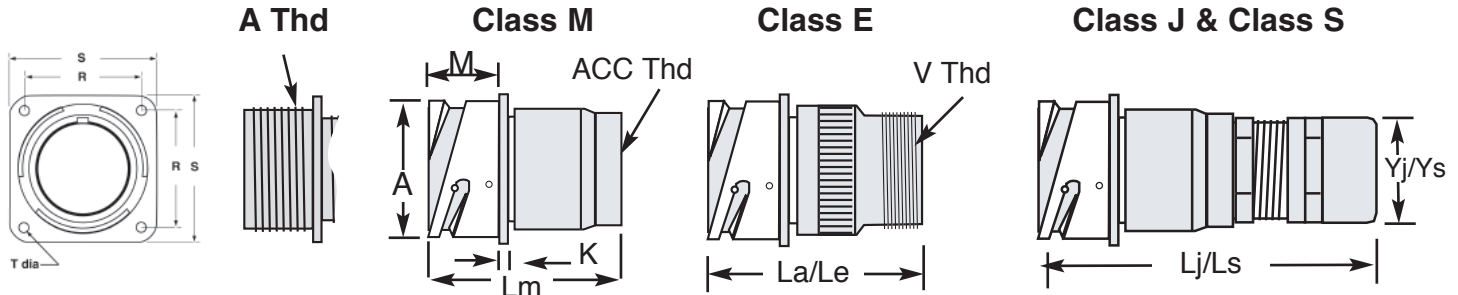


8

EPIC® Circular Connectors

EAB & EAC Series (5015)

Wall Mount Receptacle (EA_00...)

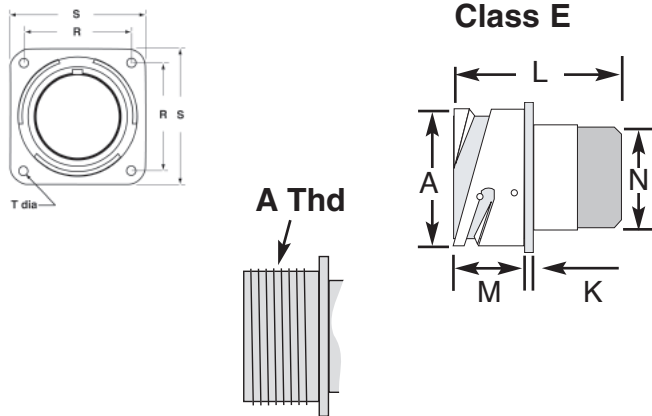


Dimensions in Inches (Millimeters)

Shell Size	A	A Thread Class 2A	K	La/Le Max	Lm Max	Lj/Ls Max	M	R	S	T	Yj/Ys Max	Cable OD Nominal *1	Acc Thread	V Thread Class 2 A
10SL	.717 (18.2)	.625-24 UNEF	.110 (2.8)	1.575 (40)	2.317 (58.85)	3.341 (84.86)	.567 (14.4)	.717 (18.21)	1.000 (25.4)	.126 (3.2)	.894 (22.7)	.177 - .354 (4.5 - 9.0)	M16	5/8-24 UNEF
14S	.969 (24.6)	.875-20 UNEF	.126 (3.2)	1.575 (40)	2.317 (58.85)	3.459 (87.86)	.567 (14.4)	.906 (23.0)	1.181 (30.0)	.126 (3.2)	1.075 (27.3)	.276 - .492 (7.0 - 12.5)	M20	3/4-20 UNEF
16S	1.079 (27.4)	1.000-20 UNEF	.126 (3.2)	1.575 (40)	2.317 (58.85)	3.518 (89.36)	.567 (14.4)	.969 (24.6)	1.280 (32.5)	.126 (3.2)	1.280 (32.5)	.354 - .650 (9.0 - 16.5)	M25	7/8-20 UNEF
16	1.079 (27.4)	1.000-20 UNEF	.126 (3.2)	2.016 (51.2)	2.758 (70.05)	3.959 (100.6)	.756 (19.2)	.969 (24.6)	1.280 (32.5)	.126 (3.2)	1.280 (32.5)	.354 - .650 (9.0 - 16.5)	M25	7/8-20 UNEF
18	1.213 (30.8)	1.125-18 UNEF	.154 (3.9)	2.016 (51.2)	2.758 (70.05)	3.959 (100.6)	.756 (19.2)	1.063 (27.0)	1.378 (35.0)	.126 (3.2)	1.280 (32.5)	.354 - .650 (9.0 - 16.5)	M25	1-20 UNEF
20	1.346 (34.2)	1.250-18 UNEF	.154 (3.9)	2.016 (51.2)	2.953 (75.01)	4.390 (111.5)	.756 (19.2)	1.157 (29.4)	1.496 (38)	.126 (3.2)	1.594 (40.5)	.433 - .827 (11.0 - 21.0)	M32	1 3/16-18 UNEF
22	1.472 (37.4)	1.375-18 UNEF	.154 (3.9)	2.016 (51.2)	2.953 (75.01)	4.390 (111.5)	.756 (19.2)	1.252 (31.8)	1.614 (41)	.126 (3.2)	1.594 (40.5)	.433 - .827 (11.0 - 21.0)	M32	1 3/16-18 UNEF
24	1.610 (40.9)	1.500-18 UNEF	.154 (3.9)	2.067 (52.50)	3.004 (76.30)	4.540 (115.3)	.819 (20.8)	1.374 (34.9)	1.752 (44.5)	.146 (3.7)	2.016 (51.2)	.748 - 1.102 (19.0 - 28.0)	M40	1 7/16-18 UNEF
28	1.839 (46.7)	1.750-18 UNEF	.154 (3.9)	2.382 (60.50)	3.319 (84.30)	4.855 (123.3)	.819 (20.8)	1.563 (39.7)	2.000 (50.8)	.146 (3.7)	2.016 (51.2)	.748 - 1.102 (19.0 - 28.0)	M40	1 7/16-18 UNEF

*1 For exact OD range see SKINTOP® MS-M (Page 502) or MS-SC-M (Page 505)

Box Mount Receptacle (EA_02...)



Dimensions in Inches (Millimeters)

Shell Size	A	A Thread	K	L	M	N	R	S	T
10SL	See Table Above	See Table Above	See Table Above	.972 (24.7)	See Table Above	.630 (16.0)	See Table Above	See Table Above	See Table Above
14S				.972 (24.7)		.754 (19.15)			
16S				.972 (24.7)		.880 (22.35)			
16				1.358 (34.5)		.880 (22.35)			
18				1.358 (34.5)		1.008 (25.6)			
20				1.358 (34.5)		1.130 (28.7)			
22				1.358 (34.5)		1.492 (37.9)			
24				1.409 (35.8)		1.382 (35.1)			
28				1.409 (35.8)		1.630 (41.4)			

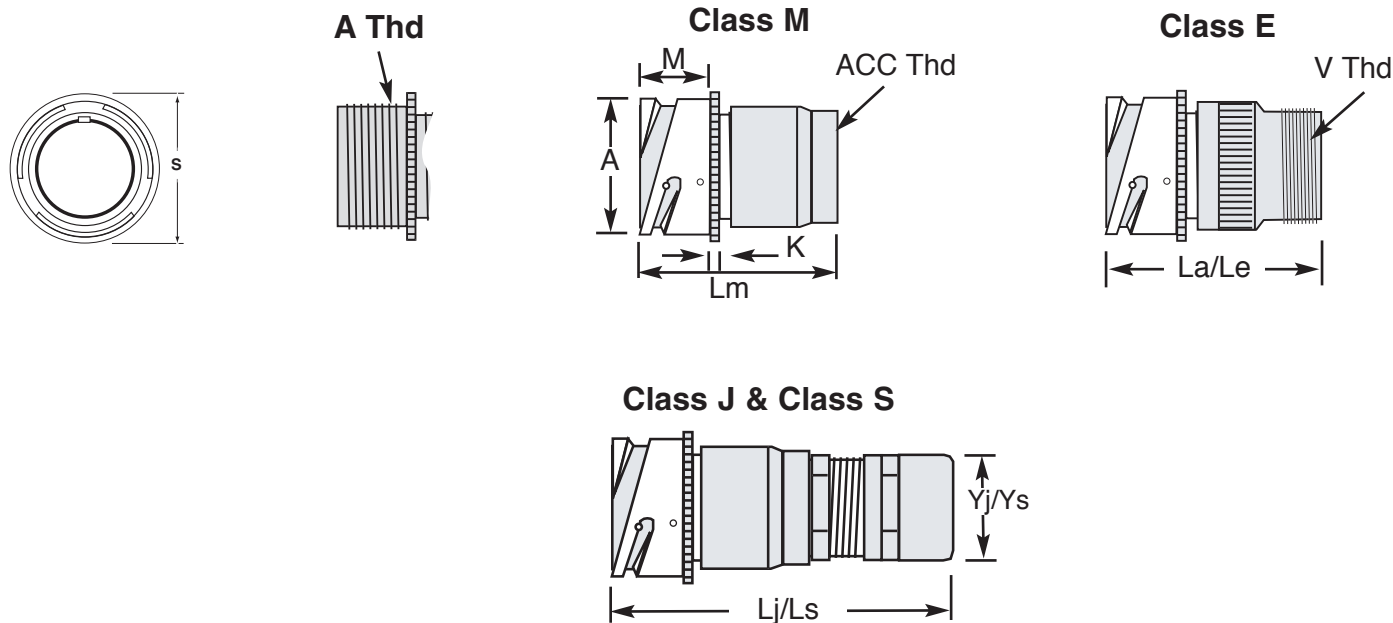
Application: Wall/box mounting connector. Mates with housing styles EA_06..., EA_08...

Note: L* dimension equals total connector length including cable accessory.

EPIC® Circular Connectors

EAB & EAC Series (5015)

Cable Coupler Receptacle (EA_01...)



Dimensions in Inches (Millimeters)												
Shell Size	A	A Thread Class 2A	K	La/Le Max	Lm Max	Lj/Ls Max	M	S	Yj/Ys Max	Cable OD Nominal *1	Acc Thread	V Thread Class 2 A
10SL	.717 (18.2)	.625-24 UNEF	.110 (2.8)	1.575 (40)	2.317 (58.85)	3.341 (84.86)	.567 (14.4)	.976 (24.8)	.894 (22.7)	.177 - .354 (4.5 - 9.0)	M16	5/8-24 UNEF
14S	.969 (24.6)	.875-20 UNEF	.126 (3.2)	1.575 (40)	2.317 (58.85)	3.459 (87.86)	.567 (14.4)	1.165 (29.6)	1.075 (27.3)	.276 - .492 (7.0 - 12.5)	M20	3/4-20 UNEF
16S	1.079 (27.4)	1.000-20 UNEF	.126 (3.2)	1.575 (40)	2.317 (58.85)	3.518 (89.36)	.567 (14.4)	1.260 (32.0)	1.280 (32.5)	.354 - .650 (9.0 - 16.5)	M25	7/8-20 UNEF
16	1.079 (27.4)	1.000-20 UNEF	.126 (3.2)	2.016 (51.2)	2.758 (70.05)	3.959 (100.6)	.756 (19.2)	1.260 (32.0)	1.280 (32.5)	.354 - .650 (9.0 - 16.5)	M25	7/8-20 UNEF
18	1.213 (30.8)	1.125-18 UNEF	.154 (3.9)	2.016 (51.2)	2.758 (70.05)	3.959 (100.6)	.756 (19.2)	1.343 (34.1)	1.280 (32.5)	.354 - .650 (9.0 - 16.5)	M25	1-20 UNEF
20	1.346 (34.2)	1.250-18 UNEF	.154 (3.9)	2.016 (51.2)	2.953 (75.01)	4.390 (111.5)	.756 (19.2)	1.500 (38.1)	1.594 (40.5)	.433 - .827 (11.0 - 21.0)	M32	1 3/16-18 UNEF
22	1.472 (37.4)	1.375-18 UNEF	.154 (3.9)	2.016 (51.2)	2.953 (75.01)	4.390 (111.5)	.756 (19.2)	1.622 (41.2)	1.594 (40.5)	.433 - .827 (11.0 - 21.0)	M32	1 3/16-18 UNEF
24	1.610 (40.9)	1.500-18 UNEF	.154 (3.9)	2.067 (52.50)	3.004 (76.30)	4.540 (115.3)	.819 (20.8)	1.764 (44.8)	2.016 (51.2)	.748 - 1.102 (19.0 - 28.0)	M40	1 7/16-18 UNEF
28	1.839 (46.7)	1.750-18 UNEF	.154 (3.9)	2.382 (60.50)	3.319 (84.30)	4.855 (123.3)	.819 (20.8)	2.012 (51.1)	2.016 (51.2)	.748 - 1.102 (19.0 - 28.0)	M40	1 7/16-18 UNEF

*1 For exact OD range see SKINTOP® MS-M (Page 502) or MS-SC-M (Page 505)

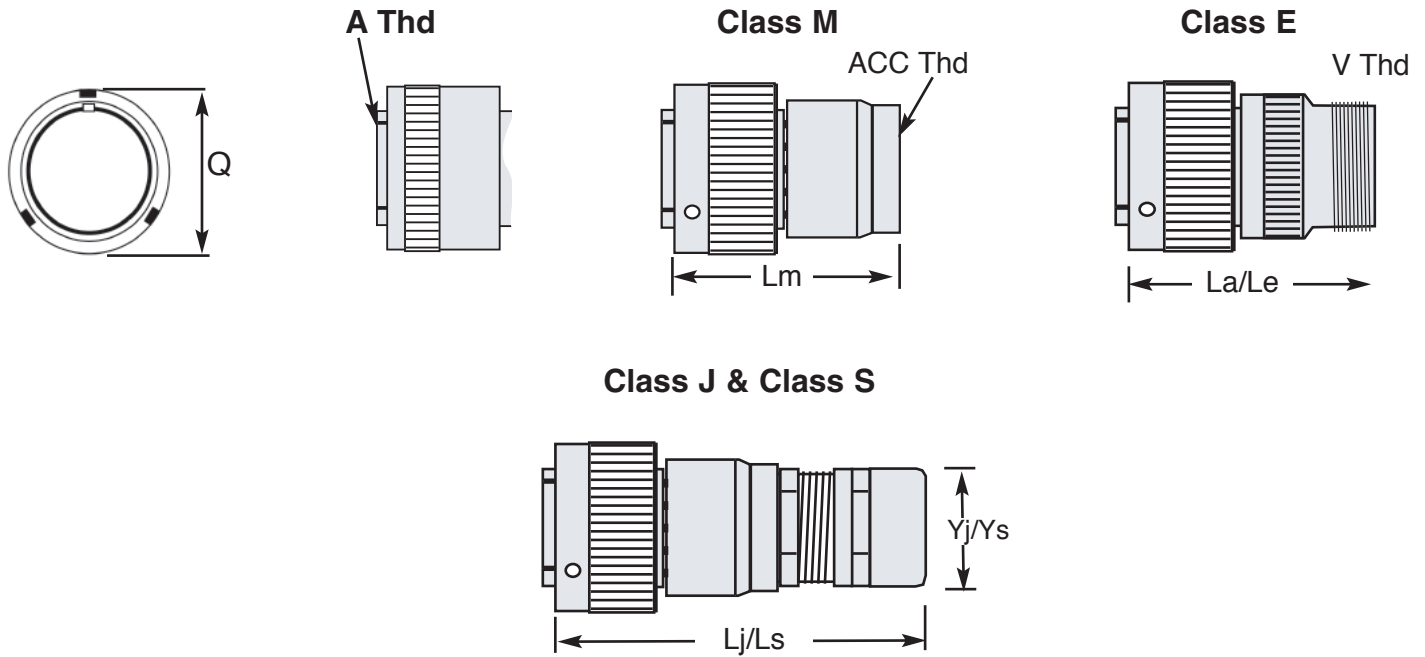
Application: Cable coupler receptacle. Mates with housing styles EA_06... and EA_08...

Note: L* dimension equals total connector length including cable accessory.

EPIC® Circular Connectors

EAB & EAC Series (5015)

Straight Plug Connector (EA_06...)



Dimensions in Inches (Millimeters)										
Shell Size	A Thread Class 2A	La/Le Max	Lm Max	Lj/Ls Max	EAB Q	EAC Q	Yj/Ys Max	Cable OD Nominal *1	Acc Thread	V Thread Class 2 A
10SL	.625-24 UNEF	1.575 (40)	2.317 (58.85)	3.341 (84.86)	.866 (22.0)	.906 (23.0)	.894 (22.7)	.177 - .354 (4.5 - 9.0)	M16	5/8-24 UNEF
14S	.875-20 UNEF	1.575 (40)	2.317 (58.85)	3.459 (87.86)	1.142 (29.0)	1.102 (28.0)	1.075 (27.3)	.276 - .492 (7.0 - 12.5)	M20	3/4-20 UNEF
16S	1.000-20 UNEF	1.575 (40)	2.317 (58.85)	3.518 (89.36)	1.252 (31.8)	1.240 (31.5)	1.280 (32.5)	.354 - .650 (9.0 - 16.5)	M25	7/8-20 UNEF
16	1.000-20 UNEF	2.016 (51.2)	2.758 (70.05)	3.959 (100.6)	1.252 (31.8)	1.240 (31.5)	1.280 (32.5)	.354 - .650 (9.0 - 16.5)	M25	7/8-20 UNEF
18	1.125-18 UNEF	2.016 (51.21)	2.758 (70.05)	3.959 (100.6)	1.433 (36.4)	1.343 (34.1)	1.280 (32.5)	.354 - .650 (9.0 - 16.5)	M25	1-20 UNEF
20	1.250-18 UNEF	2.016 (51.21)	2.953 (75.01)	4.390 (111.5)	1.567 (39.8)	1.469 (37.3)	1.594 (40.5)	.433 - .827 (11.0 - 21.0)	M32	1 3/16-18 UNEF
22	1.375-18 UNEF	2.016 (51.21)	2.953 (75.01)	4.390 (111.5)	1.693 (43.0)	1.587 (40.3)	1.594 (40.5)	.433 - .827 (11.0 - 21.0)	M32	1 3/16-18 UNEF
24	1.500-18 UNEF	2.067 (52.50)	3.004 (76.30)	4.540 (115.3)	1.831 (46.5)	1.713 (43.5)	2.016 (51.2)	.748 - 1.102 (19.0 - 28.0)	M40	1 7/16-18 UNEF
28	1.750-18 UNEF	2.382 (60.50)	3.319 (84.30)	4.855 (123.3)	2.067 (52.5)	1.945 (49.4)	2.016 (51.2)	.748 - 1.102 (19.0 - 28.0)	M40	1 7/16-18 UNEF

*1 For exact OD range see SKINTOP® MS-M (Page 502) or MS-SC-M (Page 505)

Application: Straight plug connector.

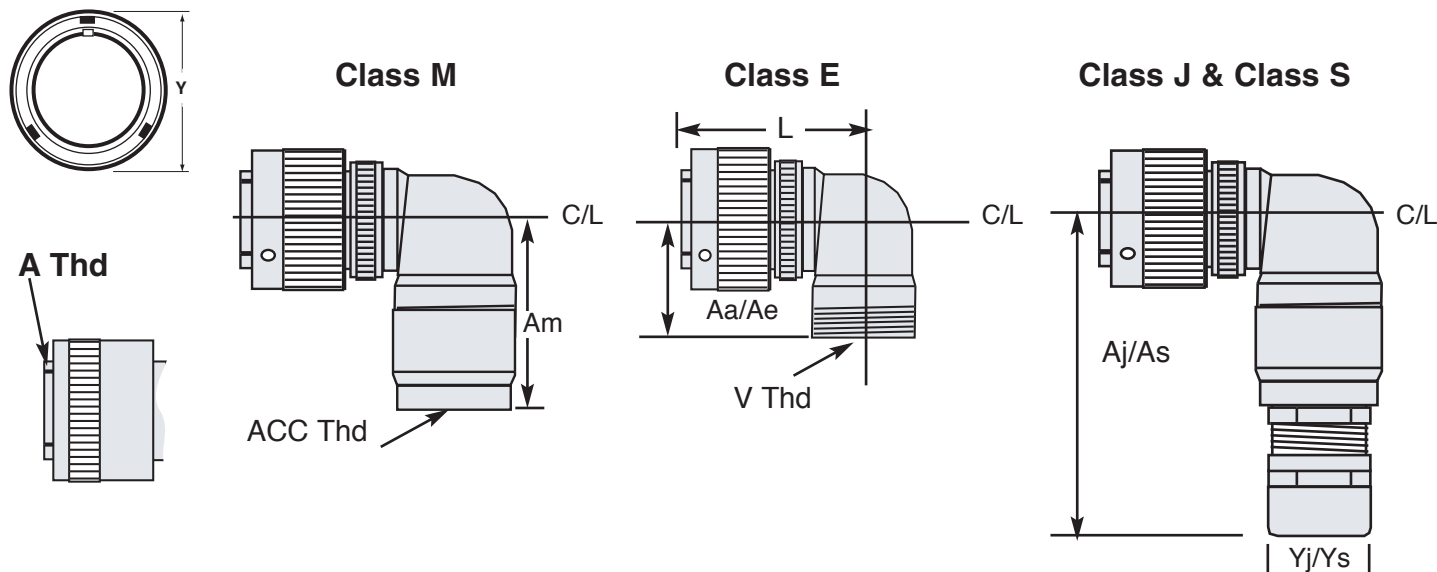
Mates with housing styles EA_00...; EA_01...; EA_02...

Note: L* dimension equals total connector length including cable accessory

EPIC® Circular Connectors

EAB & EAC Series (5015)

Right Angle Plug Connector (EA_08...)



Dimensions in Inches (Millimeters)

Shell Size	A Thread Class 2A	L	Aa/Ae	Am	Aj/As	EAB Y	EAC Y	Yj/Ys Max	Cable OD Nominal *1	Acc Thread	V Thread Class 2 A
10SL	.625-24 UNEF	1.512 (38.4)	.945 (24.0)	2.294 (58.3)	3.318 (84.3)	.894 (22.7)	.906 (23.0)	.894 (22.7)	.177 - .354 (4.5 - 9.0)	M16	5/8-24 UNEF
14S	.875-20 UNEF	1.571 (39.9)	1.031 (26.2)	2.375 (60.3)	3.517 (89.3)	1.142 (29.0)	1.102 (28.0)	1.075 (27.3)	.276 - .492 (7.0 - 12.5)	M20	3/4-20 UNEF
16S	1.000-20 UNEF	1.701 (43.2)	1.094 (27.8)	2.438 (61.9)	3.639 (92.4)	1.252 (31.8)	1.240 (31.5)	1.280 (32.5)	.354 - .650 (9.0 - 16.5)	M25	7/8-20 UNEF
16	1.000-20 UNEF	2.089 (53.1)	1.094 (27.8)	2.493 (63.3)	3.694 (93.8)	1.252 (31.8)	1.240 (31.5)	1.280 (32.5)	.354 - .650 (9.0 - 16.5)	M25	7/8-20 UNEF
18	1.125-18 UNEF	2.195 (55.8)	1.189 (30.2)	2.588 (65.7)	3.789 (96.2)	1.433 (36.4)	1.343 (34.1)	1.280 (32.5)	.354 - .650 (9.0 - 16.5)	M25	1-20 UNEF
20	1.250-18 UNEF	2.315 (58.8)	1.252 (31.8)	NA	NA	1.567 (39.8)	1.469 (37.3)	NA	NA	NA	1 3/16-18 UNEF
22	1.375-18 UNEF	2.417 (61.4)	1.319 (33.5)	NA	NA	1.693 (43.0)	1.587 (40.3)	NA	NA	NA	1 3/16-18 UNEF
24	1.500-18 UNEF	2.465 (62.6)	1.378 (35.0)	NA	NA	1.831 (46.5)	1.713 (43.5)	NA	NA	NA	1 7/16-18 UNEF
28	1.750-18 UNEF	2.555 (64.9)	1.476 (37.5)	NA	NA	2.067 (52.5)	1.965 (49.4)	NA	NA	NA	1 7/16-18 UNEF

*1 For exact OD range see SKINTOP® MS-M (Page 502) or MS-SC-M (Page 505)

Application: Right angle plug connector.

Mates with housing styles EA_00...; EA_01...; and EA_02...

Note: A* dimension equals total length from center line including cable accessory

EPIC® Circular Connectors

EAB & EAC Series (5015)

Panel Gasket



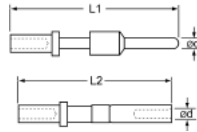
Shell Size	Flat Panel Gasket
10	61U05315
14	61U05316
16	61U05317
18	61U05318
20	61U05319
22	61U05320
24	61U05321
28	61U05322

Grommet Hole Seal Plug



Contact Size	Color	Part Number
16	Blue	61U05332
12	Yellow	61U05333
8	White	61U05334

Crimp Contacts: Spares only- Basic connector includes contact

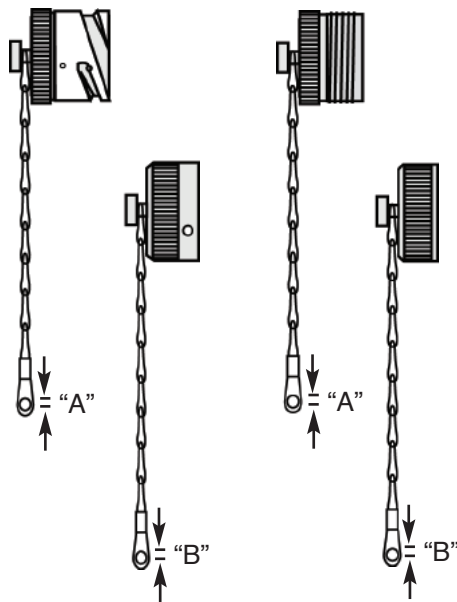


Contact Size	mm ²	AWG	L1 inches (mm)	L2 inches (mm)	ød inches (mm)	Pin	Socket	Strip Length inch (mm)
16S	1 - 1.5	18 - 16	1.050 (26.7)	1.050 (26.7)	.062 (1.6)	61U05335	61U05339	.312
16	1 - 1.5	18 - 16	1.250 (31.7)	1.440 (36.5)	.062 (1.6)	61U05336	61U05340	(7.9)
12	2.5 - 4.0	14 - 12	1.480 (37.7)	1.480 (37.7)	.093 (2.4)	61U05337	61U05341	
8	10	8	1.660 (42.0)	1.660 (42.0)	.141 (3.6)	61U05338	61U05342	.563 (14.3)

Connector Dust Caps

EAB Series

EAC Series



Shell Size	EAB Series	
	Plug Cap*	Receptacle Cap*
10SL	61U05367	61U05359
14S	61U05368	61U05360
16/16S	61U05369	61U05361
18	61U05370	61U05362
20	61U05371	61U05363
22	61U05372	61U05364
24	61U05373	61U05365
28	61U05374	61U05366

Shell Size	EAC Series	
	Plug Cap*	Receptacle Cap*
10SL	61U05351	61U05343
14S	61U05352	61U05344
16/16S	61U05353	61U05345
18	61U05354	61U05346
20	61U05355	61U05347
22	61U05356	61U05348
24	61U05357	61U05349
28	61U05358	61U05350






Shell Size	Chain Hole Diameter	
	Plug Cap "A" in/(mm)	Receptacle Cap "B" in/(mm)
10SL	.157 (4.0)	.142 (3.6)
14S	.157 (4.0)	.142 (3.6)
16/16S	.157 (4.0)	.142 (3.6)
18	.157 (4.0)	.142 (3.6)
20	.189 (4.8)	.142 (3.6)
22	.189 (4.8)	.142 (3.6)
24	.189 (4.8)	.167 (4.25)
28	.189 (4.8)	.167 (4.25)

*Protective plug caps for use with EA_06... and EA_08... connectors

* Protective receptacle caps for use with EA_00...; EA_01...; and EA_02... connectors

EPIC® Circular Connectors

EAB & EAC Series (5015)

							
Contact Size	mm ²	AWG	Crimp Tool	Turret Head	Crimp Gage Go-No Go	Insertion Tool	Removal Tool
16S	1 - 1.5	18 - 16	61U05397	61U05398	61U05399	61U05400	61U05403
16	1 - 1.5	18 - 16				61U05401	61U05404
12	2.5 - 4.0	14 - 12				61U05402	61U05405
8	10	8	*1	*1	*1		

* Requires pneumatic crimp tool and positioner as manufactured by Pico Crimping Tool Co.

SKINDICHT® Reducers, Enlargers, and Adapters

For use with Class M connectors

						
Shell Size	Class M Thread	Reducers	Enlargers	Metric to NPT	Metric to PG "A"	Metric to PG "B"
10SL	M16	M16/ M12 52104310	M16/ M20 52104452	M16/ 1/2" 54020100	M16/ PG7 52104200	M16/ PG9 52104340
14S	M20	M20/ M16 52104312	M20/ M25 52104454	M20/ 1/2" 54020110	M20/ PG9 52104210	M20/ PG11 52104360
16S/16	M25	M25/ M20 52104314	M25/M32 52104456	M25/ 3/4" 54020130	M25/ PG16 52104240	M25/PG21 52104400
18						
20	M32	M32/ M25 52104316	M32/ M40 52104458	M32/ 1" 54020152	M32/ PG21 52104260	M32/PG29 52104410
22						
24	M40	M40/ M32 52104318	M40/M50 52104460	M40/ 1 1/4" 54020153	M40/ PG21 52104270	M40/PG36 52104420
28						

EPIC® Circular Connectors

EAB & EAC Series (5015)

The EAB and EAC Series connectors are ideal for use with industrial power and control cables. Based on the specific application, a wide variety of cable/connector combinations is possible. The table below provides a sampling of the possibilities.



Application	Power	Control
Stationary/ Flexible	ÖLFLEX® 190/ 190 CY	ÖLFLEX® 190/ 190 CY
	ÖLFLEX® TRAY II/ II CY	ÖLFLEX® TRAY II/ II CY
	ÖLFLEX® POWER IX	ÖLFLEX® CONTROL M
	ÖLFLEX® POWER QUAD II	ÖLFLEX® CONTROL TM
	ÖLFLEX® VFD SLIM	ÖLFLEX® CONTROL COLD
	ÖLFLEX® SERVO 709 CY	ÖLFLEX® AUTO I
	ÖLFLEX® TC 600	ÖLFLEX® TC 600
Continuous Flex	ÖLFLEX® FD 890/ 890 CY	ÖLFLEX® FD 890/ 890 CY
	ÖLFLEX® FD 891/ 891 CY	ÖLFLEX® FD 891/ 891 CY
	ÖLFLEX® FD 890P/ 890 CP	ÖLFLEX® FD 890P/ 890 CP
	ÖLFLEX® FD 891P/ 891 CP	ÖLFLEX® FD 891P/ 891 CP
	ÖLFLEX® FD 890/ 890 CY	ÖLFLEX® FD 890/ 890 CY
	ÖLFLEX® ROBOT 900 P	ÖLFLEX® ROBOT 900 P
		ÖLFLEX® FD AUTO-X



EPIC® Circular Connectors

EPT Series (26482)

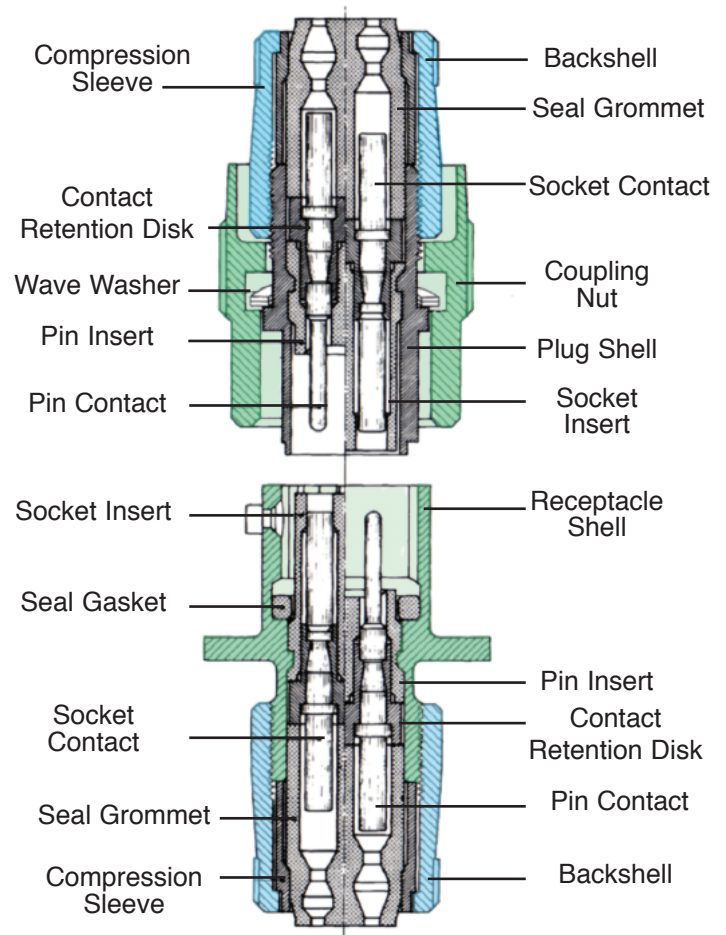
EPIC® EPT Series Connectors are available in four housing styles, four housing sizes, and eight contact configurations. Common to all arrangements are a rugged nickel plated aluminum alloy body, thermoplastic rubber contact insert, and gold plated electrical contacts. Cable mounted arrangements are also available with an integral 360 degree EMC shield and cable clamp with environmental seal. The figure below shows the general construction of these connectors. All housings are available with either male pin or female socket contacts.

The connectors are offered with insert configurations from 3 to 26 crimp contacts. Used in combination, they connect one cable with another (cable coupler) or a cable to fixed wiring in a control enclosure or on a machine, robot, instrument, encoder, or servo motor.

The new connectors incorporate many inherent features offering significant application advantages. These features make it one of the most application friendly connectors available, and insure quick and easy assembly, high reliability, and long, uninterrupted service life in tough industrial environments.



Straight Plug Connector



Key features include:

- Rugged Nickel-plated, Aluminum alloy body
- TPE insert material provides high degree of environmental and chemical resistance
- Three-point Bayonet Coupling provides positive vibration protection for use with motor drives and moving assemblies
- Available backshell designs provide strain-relief, IP67 protection, and 360 degree EMC shielding
- All materials used in these connectors are RoHS compliant
- Standard crimp contacts provide easy field assembly and replacement
- Fully intermateable and interchangeable with connectors produced in accordance with MIL-C-26482 Series 1 and 2

Cable Coupler Receptacle

EPIC® Circular Connectors

EPT Series (26482)

Electrical:

Number of Contacts	3 to 26					
Contact Termination	Crimp					
Contact Wire Range	Contact Size	Wire Gauge (AWG)	Insulation OD- Inch (mm)			
			Min.	Max.		
	20	24, 22, 20	.060 (1.52)	.083 (2.11)		
	16	20, 18, 16	.066 (1.68)	.109 (2.77)		
Current Rating	Contact Size	Rated Amps	Test Current (Amps)	Max. Millivolt Drop		
	20	7.5	7.5	55		
	16	13.0	13.0	49		
Voltage Rating	Altitude	Service Rating	Test Voltage		Max. Work Voltage	
			AC (rms)	DC	AC (rms)	DC
	Sea Level	1	1500	2100	600	850
		2	2300	3200	100	1400
	70,000 ft	1	375	535	300	510
		2	500	770	450	740
Mating Cycles	500 minimum					
Jacketed Cables OD (Class J&S)	0.08 to 0.83 inches (2.0 to 21 mm) depending on housing size					

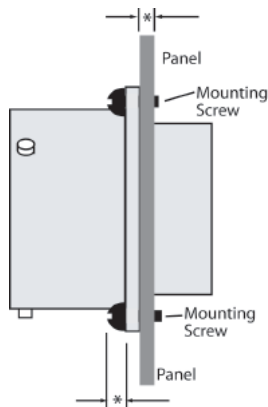
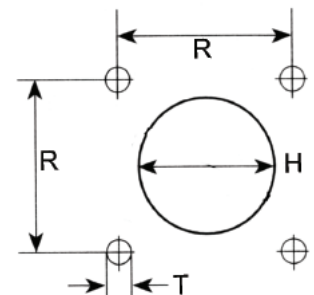
Material & Environmental:

Housing:	Nickel plated aluminum alloy
Contact Insert:	TPE Synthetic Rubber UL94 V-0
Contact:	Copper alloy, gold plate per MIL-G-45204 Type II
Gaskets & Seals:	TPE Synthetic Rubber UL94 V-0
Temperature Range:	-55°C to +125°C
Environmental Seal:	Ref MIL-C-26482 (MIL-STD 202/1344) (Class J& S IP67 equiv. mated)
RoHS Compliance:	Yes
Standards:	MIL-C-26482; MIL-G-45204 Type II

Panel Mounting for Wall and Box Mount Receptacles

EPT Wall and Box Mount Receptacles are usually front mounted to avoid clearance problems with bayonet pins and coupling nuts.

Panel Cut-out



Front Panel Mounting

Maximum Panel Thickness - inches (mm)

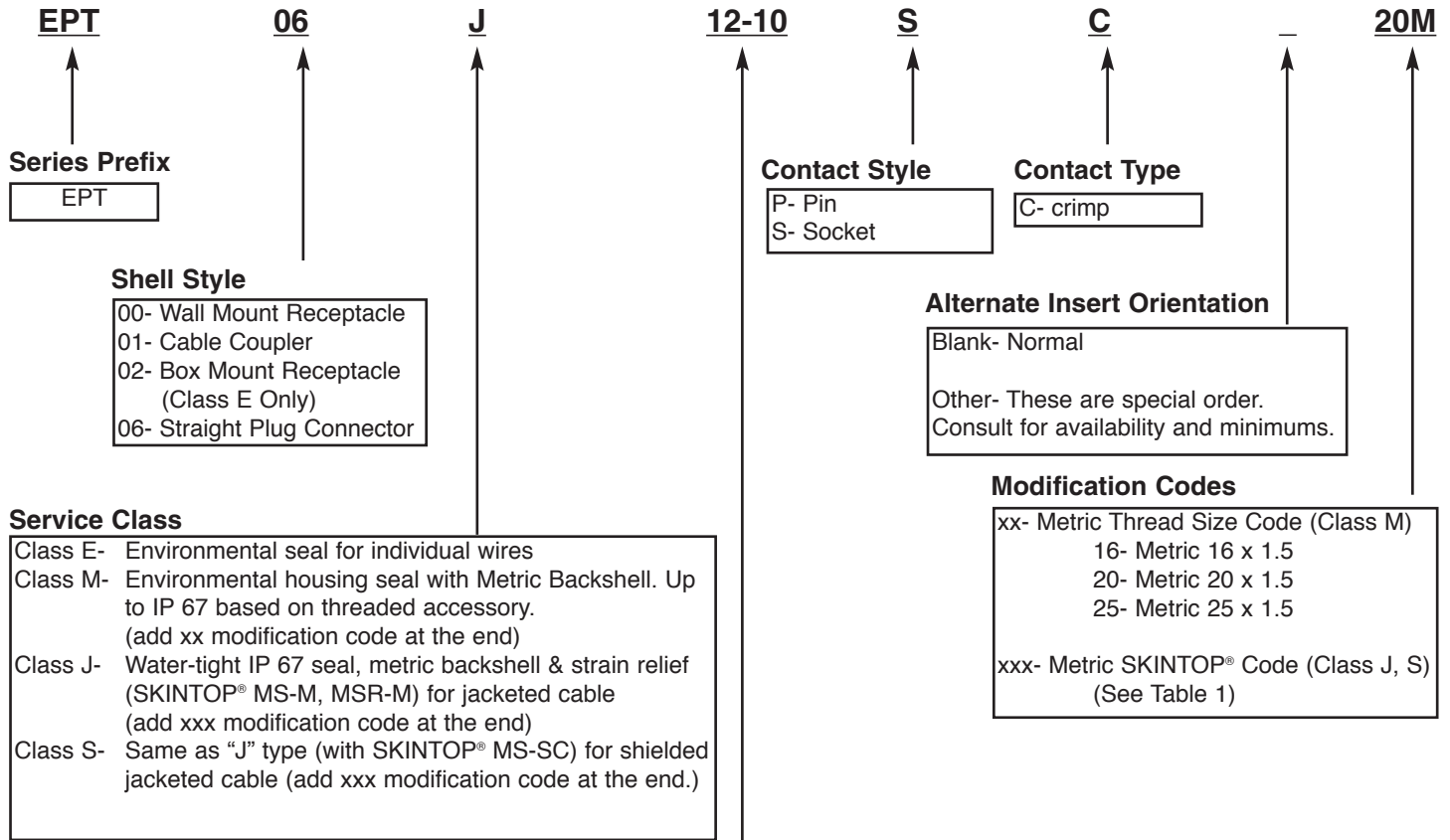
Shell Size	Screw Height	With Backshell	Without Backshell
10	.087 (2.21)	.1 (2.54)	.25 (6.35)
12	.087 (2.21)	.1 (2.54)	.25 (6.35)
14	.087 (2.21)	.1 (2.54)	.25 (6.35)
16	.087 (2.21)	.1 (2.54)	.25 (6.35)

Dimensions in inches (mm)

Shell Size	H	R	T
10	.603 (15.3)	.719 (18.3)	.125 (3.18)
12	.730 (18.5)	.812 (20.6)	.125 (3.18)
14	.855 (21.7)	.906 (23.0)	.125 (3.18)
16	.979 (24.9)	.969 (24.6)	.125 (3.18)

EPIC® Circular Connectors

EPT Series (26482)



Shell Size- Contact Arrangement Code









Code	Shell Size	# of Contacts	Oper Amps	Max. Volts
10-6	10	6	7.5	600
12-10	12	10	7.5	600
14-12	14	8+4	7.5 +13	600
14-19	14	19	7.5	600
16-26	16	26	7.5	600
12-3	12	3	13	1000
14-5	14	5	13	1000
16-8	16	8	13	1000

Code	Thread Size	Shell Size	SKINTOP® Type	Reference	Cable OD Range		Service Class
					mm	inches	
16M	M16	10	MS-M	53112010	4.5 - 10	.177 - .394	J
16R			MSR-M	53112110	2 - 7	.079 - .276	J
16S			MS-SC	53112620	4.5 - 9	.177 - .354	S
20M	M20	12, 14	MS-M	53112020	7 - 13	.276 - .512	J
20R			MSR-M	53112120	5 - 10	.197 - .394	J
20S			MS-SC	53112630	7 - 12.5	.276 - .492	S
25M	M25	16	MS-M	53112030	9 - 17	.354 - .669	J
25R			MSR-M	53112130	6 - 13	.236 - .512	J
25S			MS-SC	53112640	9 - 16.5	.354 - .650	S

EPIC® Circular Connectors

EPT Series (26482)

Connector inserts follow standard MIL-C-26482 configurations and are available with either all male or all female contacts.

Shell Size	Insert	No. of Contacts	Voltage Class	Contact Size	
				16	20
10	 10-6	6	1		6
12	 12-3	3	2	3	
	 12-10	10	1		10
	 14-5	5	2	5	
14	 14-12	12	1	4	8
	 14-19	19	1		19
16	 16-8	8	2	8	
	 16-26	28	1		26

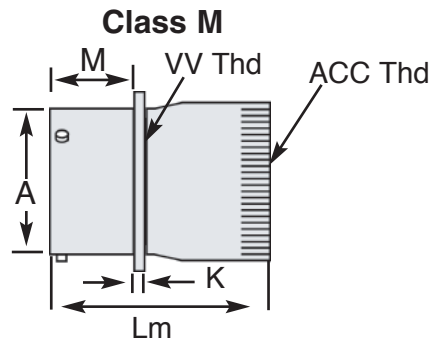
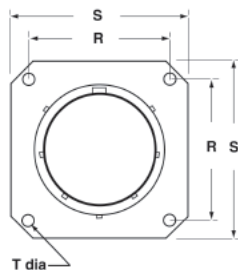
Contact Size



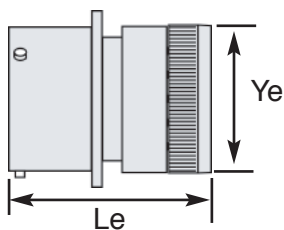
EPIC® Circular Connectors

EPT Series (26482)

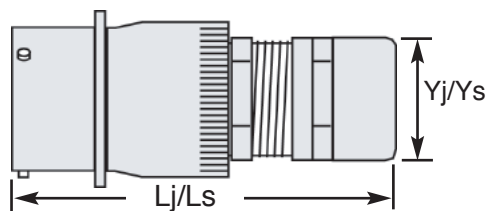
Wall Mount Receptacle (EPT00...)



Class E



Class J & Class S



Dimensions in Inches (Millimeters)

Shell Size	A	K	Lm Max.	Le Max.	Lj/Ls Max.	M	R	S	T	Ye Max.	Yj/Ys Max.	Acc Thread	V Thread Class 2 A
10	.588 (14.94)	.062 (.157)	1.624 (41.3)	1.281 (32.54)	2.608 (66.2)	.431 (10.95)	.719 (18.26)	.954 (24.23)	.120 (3.05)	.734 (18.64)	.894 (22.7)	M16	9/16-24 UNEF
12	.748 (19.0)	.062 (.157)	1.624 (41.3)	1.281 (32.54)	2.709 (68.8)	.431 (10.95)	.812 (20.63)	1.047 (26.59)	.120 (3.05)	.858 (21.79)	1.075 (27.3)	M20	11/16-24 UNEF
14	.873 (22.17)	.062 (.157)	1.624 (41.3)	1.281 (32.54)	2.709 (68.8)	.431 (10.95)	.906 (23.01)	1.141 (28.98)	.120 (3.05)	.984 (24.99)	1.075 (27.3)	M20	13/16-20 UNEF
16	.998 (25.35)	.062 (1.57)	1.742 (44.3)	1.281 (32.54)	2.903 (73.7)	.431 (10.95)	.969 (24.61)	1.234 (31.34)	.120 (3.05)	1.110 (28.19)	1.280 (32.5)	M25	15/16-20 UNEF

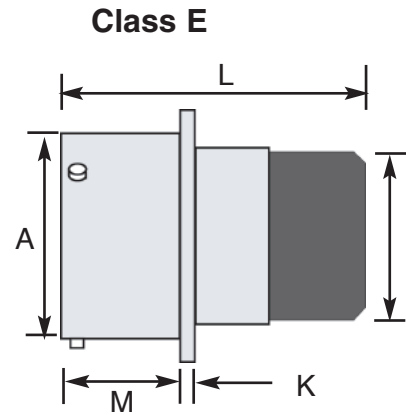
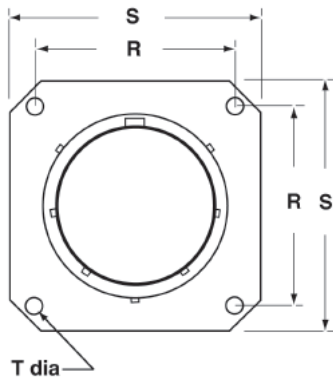
Application: Wall/ panel mounting connector. Mates with housing style EPT06.

Note: "L" dimension equals total connector length including cable accessory.

EPIC® Circular Connectors

EPT Series (26482)

Box Mount Receptacle (EPT02...)



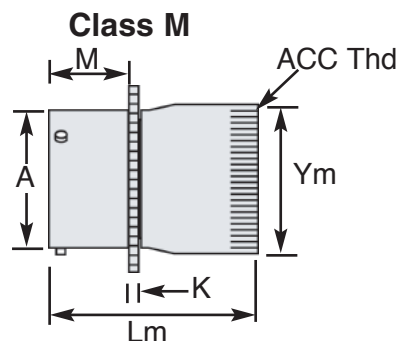
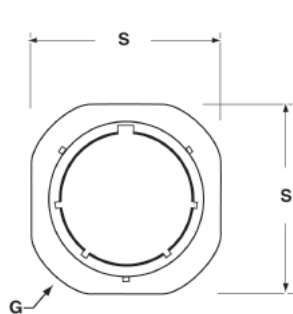
Dimensions in Inches (Millimeters)								
Shell Size	A	K	L Max	M	N	R	S	T
10	.588 (14.94)	.062 (.157)	1.320 (33.53)	.431 (10.95)	.558 (14.27)	.719 (18.26)	.954 (24.23)	.120 (3.05)
12	.748 (19.0)	.062 (1.57)	1.320 (33.53)	.431 (10.95)	.688 (17.48)	.812 (20.62)	1.047 (26.59)	.120 (3.05)
14	.873 (22.17)	.062 (1.57)	1.320 (33.53)	.431 (10.95)	.812 (20.62)	.906 (23.01)	1.141 (28.98)	.120 (3.05)
16	.998 (25.35)	.062 (1.57)	1.320 (33.53)	.431 (10.95)	.938 (23.83)	.969 (24.61)	1.234 (31.34)	.120 (3.05)

Application: Panel mounting connector. Mates with housing style EPT06.

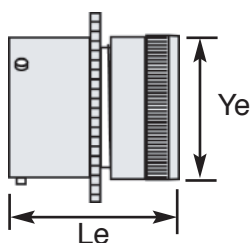
EPIC® Circular Connectors

EPT Series (26482)

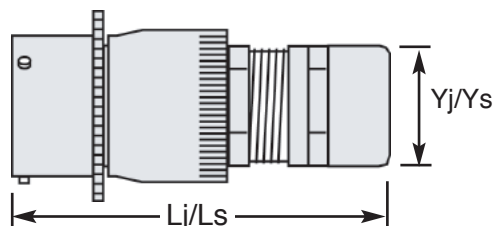
Cable Coupler Receptacle (EPT01...)



Class E



Class J & Class S



Dimensions in Inches (Millimeters)

Shell Size	A	K	Lm Max.	Le Max	Lj/Ls Max	M	S	G	Ym Max	Ye Max	Yj/Ys Max	Acc Thread
10	.588 (14.94)	.094 (2.39)	1.624 (41.3)	1.281 (32.54)	2.608 (66.2)	.400 (10.16)	.954 (24.23)	1.062 (26.97)	.791 (20.1)	.734 (18.64)	.894 (22.7)	M16
12	.748 (19.0)	.094 (2.39)	1.624 (41.3)	1.281 (32.54)	2.709 (68.8)	.400 (10.16)	1.047 (26.59)	1.156 (29.36)	.947 (24.05)	.858 (21.79)	1.075 (27.3)	M20
14	.873 (22.17)	.094 (2.39)	1.624 (41.3)	1.281 (32.54)	2.709 (68.8)	.400 (10.16)	1.141 (28.98)	1.250 (31.75)	.947 (24.05)	.984 (24.99)	1.075 (27.3)	M20
16	.998 (25.35)	.094 (2.39)	1.742 (44.3)	1.281 (32.54)	2.903 (73.7)	.400 (10.16)	1.234 (31.34)	1.344 (34.14)	1.055 (26.8)	1.110 (28.19)	1.280 (32.5)	M25

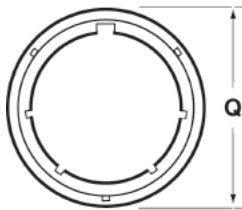
Application: Cable coupler receptacle. Mates with housing styles EPT06

Note: L* dimension equals total connector length including cable accessory.

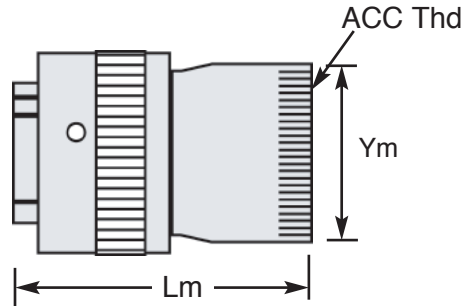
EPIC® Circular Connectors

EPT Series (26482)

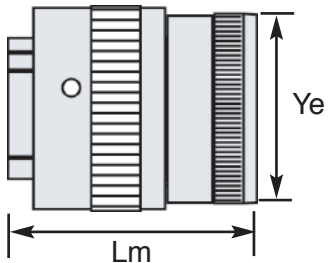
Straight Plug Connector (EPT06...)



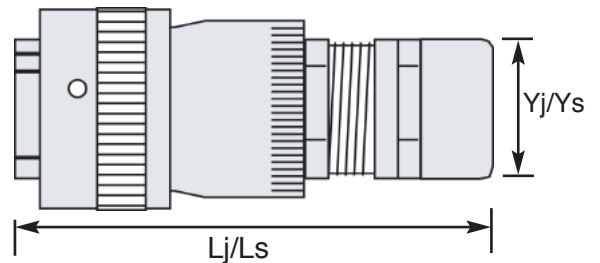
Class M



Class E



Class J & Class S



Dimensions in Inches (Millimeters)								
Shell Size	Lm Max.	Le Max	Lj/Ls Max	Q	Ym Max	Ye Max	Yj/Ys Max	Acc Thread
10	1.856 (47.15)	1.513 (38.43)	2.84 (72.14)	.926 (23.52)	.717 (18.21)	.734 (18.64)	.894 (22.7)	M16
12	1.856 (47.15)	1.513 (38.43)	2.941 (74.70)	1.043 (26.49)	.834 (21.18)	.858 (21.79)	1.075 (27.3)	M20
14	1.856 (47.15)	1.513 (38.43)	2.941 (74.70)	1.183 (30.05)	.970 (24.61)	.984 (24.99)	1.075 (27.3)	M20
16	1.974 (50.14)	1.513 (38.43)	3.135 (79.63)	1.305 (33.15)	1.088 (27.64)	1.110 (28.19)	1.280 (32.5)	M25

Application: Straight plug connector.

Mates with housing styles EPT00...; EPT01...; EPT02...

Note: L* dimension equals total connector length including cable accessory

EPIC® Circular Connectors

EPT Series (26482)

Panel Gasket



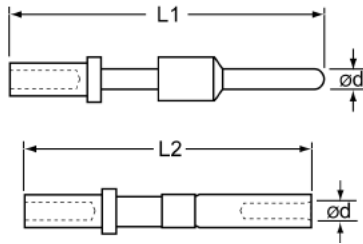
Shell Size	Flat Panel Gasket
10	61U05410
12	61U05411
14	61U05412
16	61U05413

Grommet Hole Seal Plug



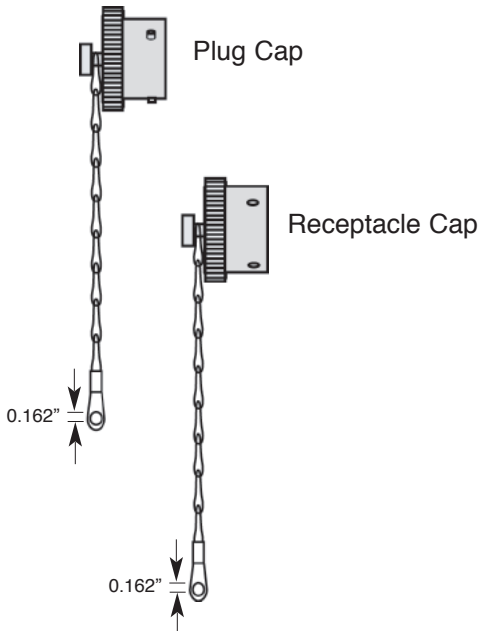
Contact Size	Color	Part Number
20	Red	61U05416
16	Blue	61U05417

Crimp Contacts: Spares Only- Basic connector includes contacts



Contact Size	mm ²	AWG	L1 inches (mm)	L2 inches (mm)	ød inches (mm)	Pin	Socket	Strip Length inch (mm)
20	.23 - 0.5	24 - 20	0.915 (23.2)	0.854 (21.7)	.040 (1.0)	61U05381	61U05383	.375 (9.5)
16	0.5 - 1.5	20 - 16	0.905 (23.0)	0.844 (21.4)	.063 (1.6)	61U05382	61U05384	.250 (6.35)

Connector Dust Caps



Shell Size	EAB Series	
	Plug Cap*	Receptacle Cap*
10	61U05385	61U05391
12	61U05386	61U05392
14	61U05387	61U05393
16	61U05388	61U05394

* Protective plug caps for use with EPT06... connectors

+ Protective receptacle caps for use with EPT00...; EPT01...; and EPT02... connectors

EPIC® Circular Connectors






EPT Series (26482)

Tool & Accessories

							
Contact Size	mm ²	AWG	Crimp Tool	Turret Head	Crimp Gage Go-No Go	Insertion Tool	Removal Tool
20	.25 - .52	24 - 20	61U05397	61U05398	61U05399	61U05406	61U05408
16	.52 - 1.5	20 - 16				61U05407	61U05409

SKINDICHT® Reducers, Enlargers, and Adapters

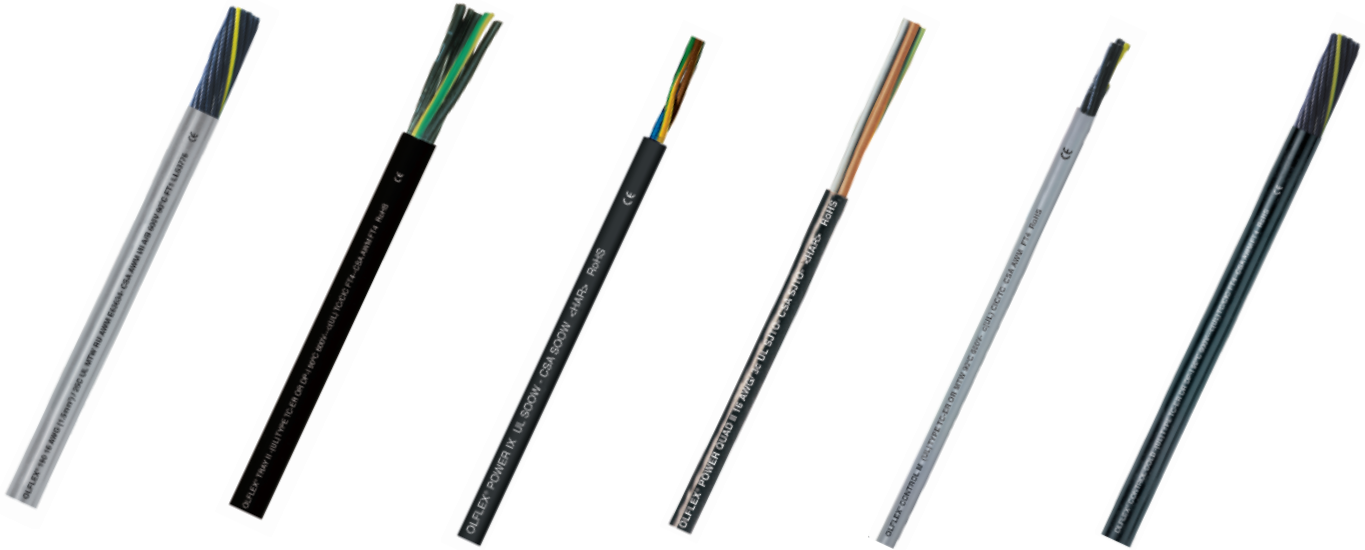
For use with Class M connectors

						
Shell Size	Class M Thread	Reducers	Enlargers	Metric to NPT	Metric to PG "A"	Metric to PG "B"
10	M16	M16/ M12 52104310	M16/ M20 52104452	M16/ 1/2" 54020100	M16/ PG7 52104200	M16/ PG 29 52104340
12, 14	M20	M20/ M16 52104312	M20/ M25 52104454	M20/ 1/2" 54020110	M20/ PG9 52104210	M20/ PG11 52104360
16	M25	M25/ M20 52104314	M25/M32 52104456	M25/ 3/4" 54020130	M25/ PG16 52104240	M25/PG21 52104400

EPIC® Circular Connectors

EPT Industrial Connectors

The EPT Series connectors are ideal for use with industrial control, data, and servo feedback cables. Based on the specific application, a wide variety of cable/ connector combinations are possible. The tables below provide a sampling of the possibilities.



Application	Power	Control
Stationary/ Flexible	ÖLFLEX® 190/ 190 CY	ÖLFLEX® 190/ 190 CY
	ÖLFLEX® TRAY II/ II CY	ÖLFLEX® TRAY II/ II CY
	ÖLFLEX® TC 600	ÖLFLEX® CONTROL M
		ÖLFLEX® CONTROL COLD
		ÖLFLEX® AUTO I
		ÖLFLEX® TC 600
Continuous Flex	ÖLFLEX® FD 890/ 890 CY	ÖLFLEX® FD 890/ 890 CY
	ÖLFLEX® FD 891/ 891 CY	ÖLFLEX® FD 891/ 891 CY
	ÖLFLEX® FD 890P/ 890 CP	ÖLFLEX® FD 890P/ 890 CP
	ÖLFLEX® FD 891P/ 891 CP	ÖLFLEX® FD 891P/ 891 CP
	ÖLFLEX® FD 890/ 890 CY	ÖLFLEX® FD 890/ 890 CY
	ÖLFLEX® ROBOT 900 P	ÖLFLEX® ROBOT 900 P
		ÖLFLEX® FD AUTO-X

