

EPIC® Circular Connectors

ZYLIN R 3.0 Series

The Zylin R3.0 Series Circular Connectors is used as an alternative to the Zylin R2.5 Series connector when additional contacts are required.

Note: Parts are specified separately but sold assembled. Always use combination part number when ordering.



TECHNICAL DATA

Number of Contacts:	21, 26
Rated Voltage:	25V/ 60V AC/DC
Test Voltage:	1.5 kV, AC
Insulation:	B: corresponds to equipment used primarily in residential premises, sales or other professional environments, precision engineering workshops, laboratories, testing centers, hospitals, etc.
Rated Current:	7.5A
Temperature Range:	-40°C to 125°C
Protection Class:	IP 65 ... IP 67, mated, DIN 40050 dependent on cable gland
Wire Gauge:	Solder: up to 1 mm ²
Cable O.D. Range:	6.5 - 16 mm
Contact Resistance	<3 (mOhm)
Mating Cycles:	500 (higher mating cycles depends on the application)
Material:	
Housing:	Copper alloy, nickel plated
Insulation Body (Inserts):	Thermoplastic according to UL94 V-0
Gaskets:	Neoprene
Contacts:	Copper alloy, gold plated

CROSS REFERENCE TABLE

Always use
Combination
Part Number when
ordering

	21 CONTACTS		26 CONTACTS	
HOUSING:	INSERT	INSERT	INSERT	INSERT
Connector	40.200121	40.250121	40.200126	40.250126
20.2040AF	00009045	00008749	00008899	00008829
20.2050AF	00008854	00008779	00008822	00008979
Panel Mount Sockets				
20.2010AA	00008747	00008867	00008825	00008746
20.2020AA	00009082	00009135	00009700	00008978
20.2030AA	00010621	00010041	00008939	00009470
20.2060AA	00009371	00009057	00009894	00009005

ACCESSORIES

ANGLED HOUSING



METAL SCREW CAP



FLAT GASKET



SEALING RING



ASSEMBLY TOOL



Std Pack of 5: Metal Screw Cap • Flat Gasket • Angled Housing

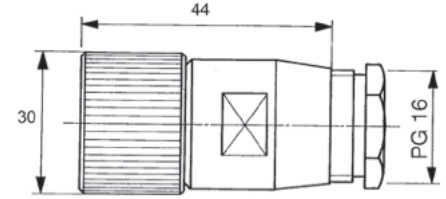
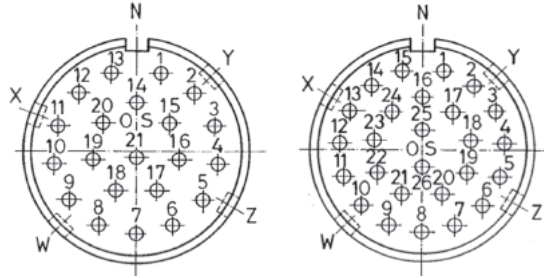
EPIC® Circular Connectors

ZYLIN R 3.0 Series

MODEL D6 CABLE CONNECTOR



202040AF



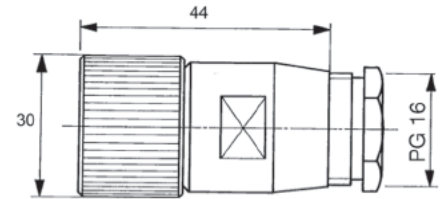
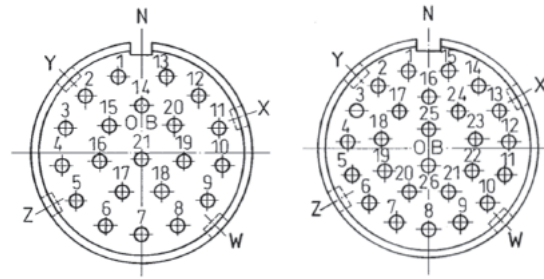
# of Contacts	Male Part #	Female Part #
21	00009045	00008749
26	00008899	00008829

Accessory Part Numbers:
 Metal Screw Cap: 50204121
 Assembly Tool: 50200800

MODEL F6 CABLE CONNECTOR



202050AF



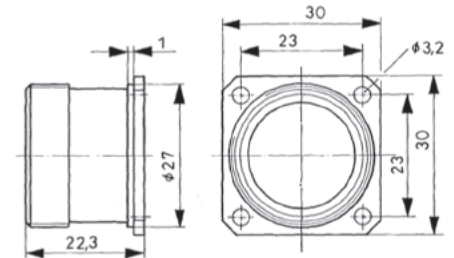
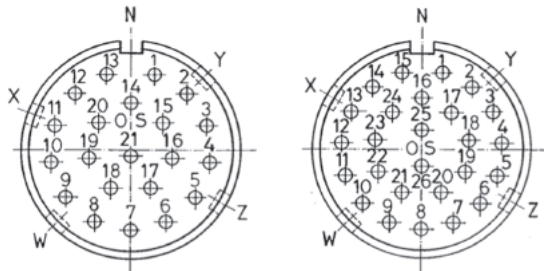
# of Contacts	Male Part #	Female Part #
21	00008854	00008779
26	00008822	00008979

Accessory Part Numbers:
 Metal Screw Cap: 50205121
 Assembly Tool: 50200800

MODEL A PANEL MOUNT BASE: FRONT WALL MOUNTING



202010AA



# of Contacts	Male Part #	Female Part #
21	00008747	00008867
26	00008825	00008746

Accessory Part Numbers:
 Flat Gasket: 50201203
 Metal Screw Cap: 50201120

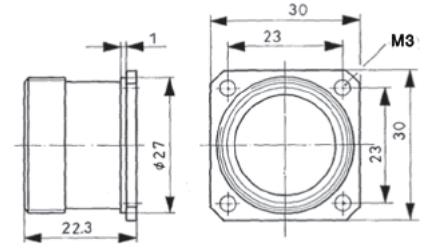
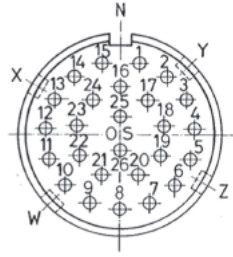
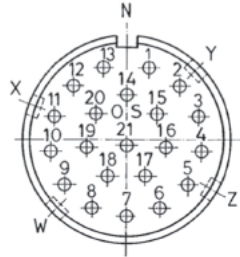
EPIC® Circular Connectors

ZYLIN R 3.0 Series

MODEL B1 PANEL MOUNT BASE: INSIDE OF PANEL MOUNTING



202020AA



# of Contacts	Male Part #	Female Part #
21	00009082	00009135
26	00009700	00008978

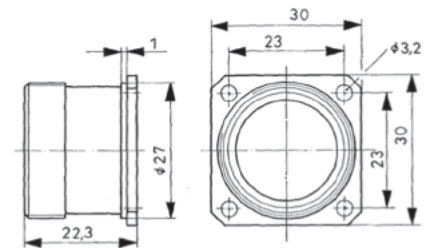
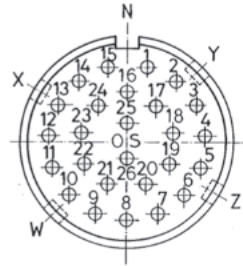
Accessory Part Numbers:

Flat Gasket: 50201203
 Metal Screw Cap: 50201120
 Angled Housing: 502012AC

MODEL B2 PANEL MOUNT BASE: INSIDE OF PANEL MOUNTING



202030AA



# of Contacts	Male Part #	Female Part #
21	00010621	00010041
26	00008939	00009470

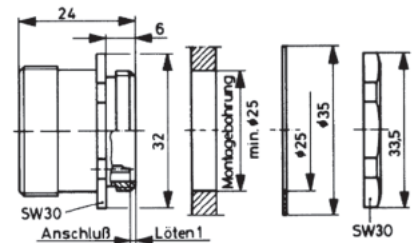
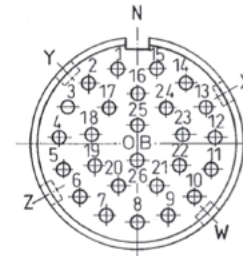
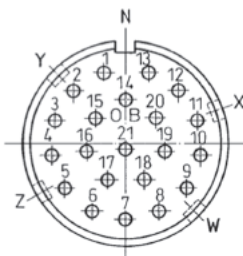
Accessory Part Numbers:

Metal Screw Cap: 50203120
 Flat Gasket: 50202203

MODEL G1 PANEL MOUNT BASE: INSIDE OF PANEL WITH LOCKNUT



202060AA



# of Contacts	Male Part #	Female Part #
21	00009371	00009057
26	00009894	00009005

Accessory Part Numbers:

Sealing Ring: 50206204