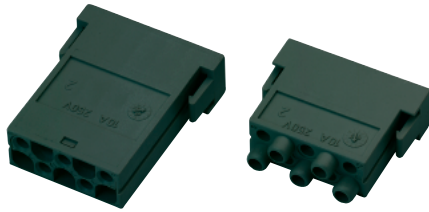


# EPIC® Rectangular Connectors



MC Series Plugs & Receptacles

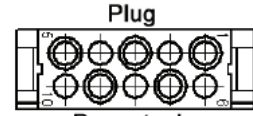
## 10 CONTACT MODULES: STAMPED & FORMED CONTACTS



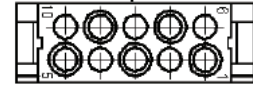
Plug

Rated Voltage:  
250V

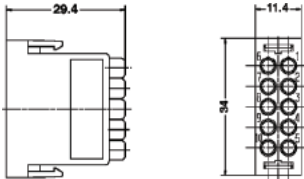
Rated Current:  
10A



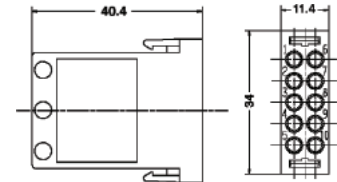
Receptacle



Receptacle

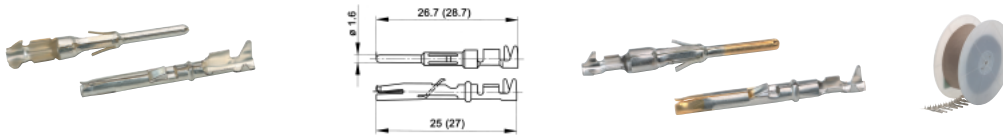


Plug	Receptacle
10383400	10383500



Contacts Sold Separately

## STAMPED & FORMED CONTACTS: DIAMETER 1.6 MM



mm <sup>2</sup>	Stripping Length (mm)
0.14 - 0.5	2.5 - 0.5
0.5 - 1.5	3.5 - 0.5
1.5 - 2.5	3.5 - 0.5

mm <sup>2</sup>	AWG	Bags of 100: Silver		Bags of 100: Gold		Reel of 100: Silver Left Hand Feed		Reel of 200: Silver Left Hand Feed	
		Pin	Socket	Pin	Socket	Pin	Socket	Pin	Socket
0.14 - 0.5	26 - 20	11241100	11231100	11243100	11233100	-	-	11240700	11230700
0.5 - 1.5	20 - 16	11221000	11236100	11221300	11238100	-	-	11220700	11235700
1.5 - 2.5	16 - 14	11223500	11228500	-	-	11223000	11228000	-	-

mm <sup>2</sup>	AWG	Reel of 2000: Right Hand Feed- Silver		Reel of 2000: Right Hand Feed- Gold		Reel of 2000: Left Hand Feed- Silver		Reel of 2000: Left Hand Feed- Silver	
		Pin	Socket	Pin	Socket	Pin	Socket	Pin	Socket
0.14 - 0.5	26 - 20	11240000	11230000	-	-	11240400	11230400	11230500	11240500
0.5 - 1.5	20 - 16	11220000	11235000	11220100	11235200	11226000	11226500	-	-
1.5 - 2.5	16 - 14	-	-	-	-	11222700	11227700	-	-

Part number= 1 contact (bags) or 1 reel.

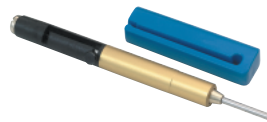
## CRIMP TOOLS



Crimp Tool  
11147000



Locator  
11147300



Removal Tool: 11161000



Crimp Tool for Reel:  
11153500



Crimp Dies

0.14-0.5:	11147170
0.5-1.5:	11147180
1.5-2.5:	11147190

Crimp Dies for Reel:

0.14-0.5:	11153600
0.5-1.5:	11153700
1.5-2.5:	11153800

