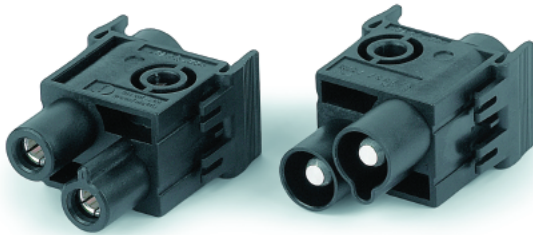
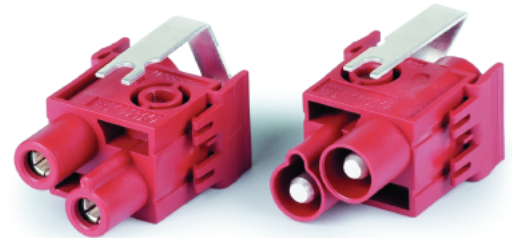


2 CONTACT MODULES

2 Working Contacts

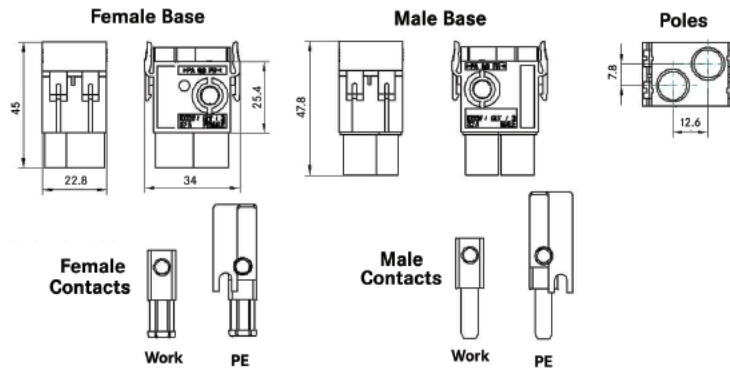


1 Working Contact & 1 Ground



Rated Voltage:
1000V

Rated Current:
82A



All dimensions are in mm.

Description	Plug	Receptacle
2 Working Contacts	10344100	10345100
1 Working Contact & 1 Ground	10344600	10345600

TECHNICAL DATA

Termination Type: mm² AWG

Screw: 4 - 25 12 - 4

Contacts:

Material: Basic material brass; 2μ Nickel and 2-3μ Silver (AG)

Contact Material: Silver plated

Mating Cycles: 100 (higher mating cycles depending on the application)

Contact Resistance: 1.5 -4 mΩ

FEATURES

- The new module can be inserted into the standard EPIC® Modular Frames.
- The modules can be inserted or removed from the frame without a tool because of the snap hooks.
- These screw contact modules can be easily wired with a standard screwdriver.
- The flexibility of the modular series allows the arrangement of modules to fit requirements.
- This module takes up 2 slots in the modular frame.
- The high current modules require the usage of high profile HBE 16 and HBE 24 housings.