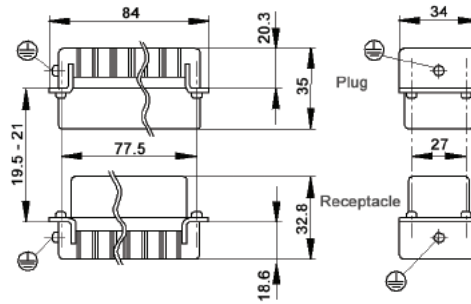
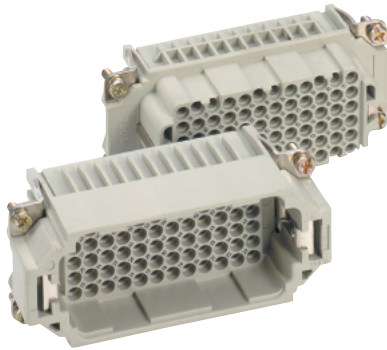
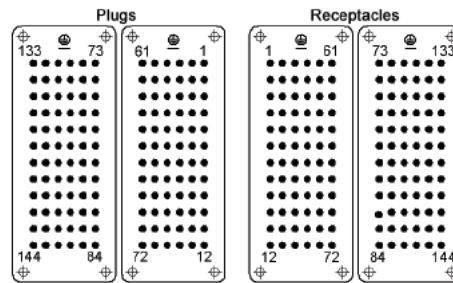
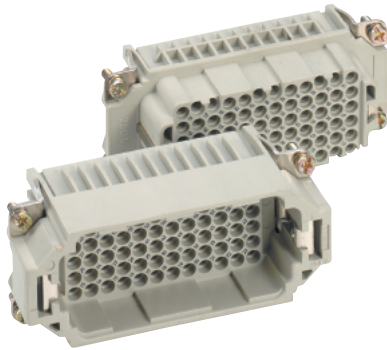


HDD 144 CRIMP TERMINATED: MACHINE CONTACT INSERTS



All dimensions are in mm.

View from Cable Side



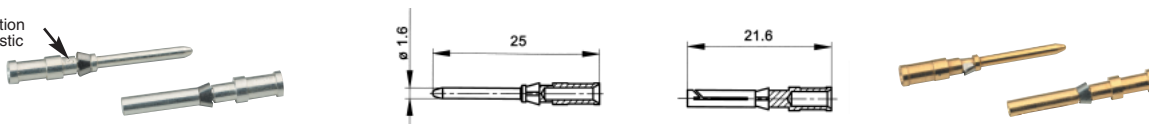
Contacts Sold Separately

Description	Plug	Receptacle
#1-72	11285200	11286200
#73-144	11285400	11286400



MACHINE CONTACTS: DIAMETER 1.6 MM

Cross section characteristic



Bags of 100							
mm ²	AWG	Silver		Gold		Stripping Length (mm)	# of Marking Tracks
		Pin	Socket	Pin	Socket		
0.14 - 0.37	26 - 22	13162000	13163000	13162500	13163500	8	1
0.5	20	13162100	13163100	13162600	13163600	8	2
0.75 - 1.0	18	13162200	13163200	13162700	13163700	8	3
1.5	16	13162300	13163300	13162800	13163800	8	4
2.5	14	13162400	13163400	13162900	13163900	5.8	5

Part number= 1 contact



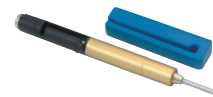
Crimp Tool
11147000



Crimp Dies
11147100



Locator
11147200



Removal Tool:
11161000