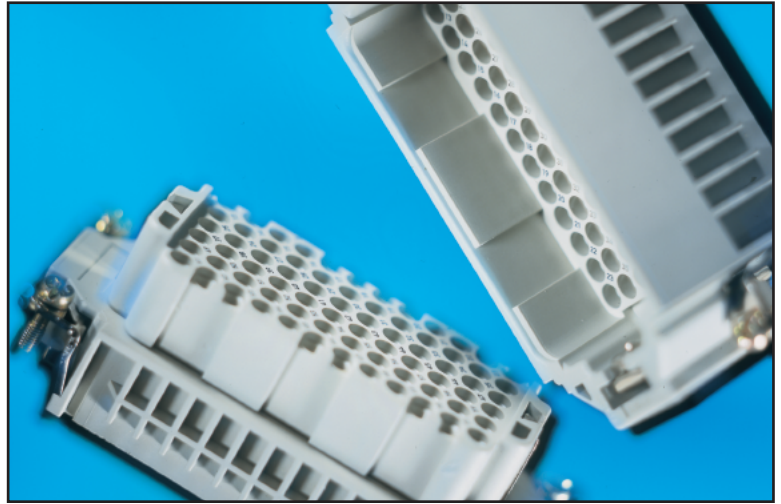


## HDD Series

The HDD series machined contact inserts are designed for a large number of contacts in narrow spaces.

These inserts fit into the HBE Series housings.

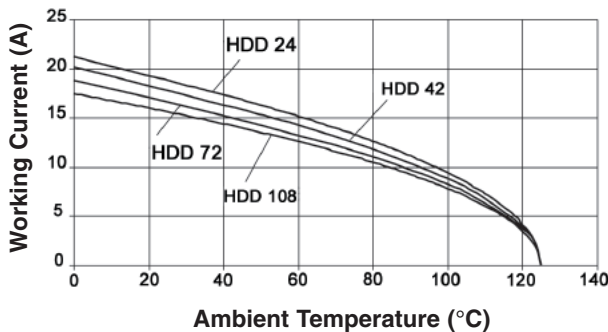


## TECHNICAL DATA

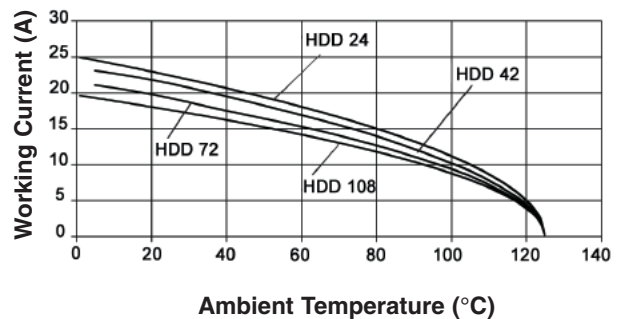
<b>Inserts:</b>		<b>Pollution Level:</b>	2
<b>Number of Contacts:</b>	24, 42, 72, 108, 144, 216 (+PE)	<b>Test Voltage:</b>	2.5 kV
<b>Rated Voltage:</b>	VDE: 250V EPIC HDD 24 - 216 UL: 600V EPIC HDD 24 - 216 CSA: 600V EPIC HDD 24 - 216	<b>Termination Type:</b>	Crimp termination: 0.14 - 2.5mm <sup>2</sup> AWG: 22 - 14
<b>Rated Current:</b>	VDE: 10A EPIC HDD 24 - 216 UL: 8.5A EPIC HDD 24 - 216 CSA: 10A EPIC HDD 24 - 216	<b>Temperature Range:</b>	-40°C to +125°C
		<b>Contacts:</b>	Copper alloy, silver plated/ gold plated
		<b>Contact Resistance:</b>	<2mOhm
		<b>Mating Cycles:</b>	100 (higher mating cycles depends on the application)

## HDD INSERTS TECHNICAL DATA: DERATING CURVES

**HDD CRIMP: 1.5 mm<sup>2</sup> (16 AWG)**



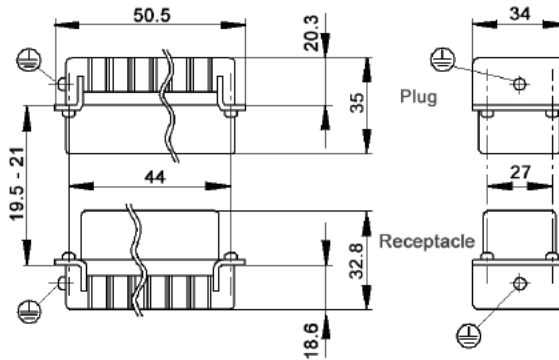
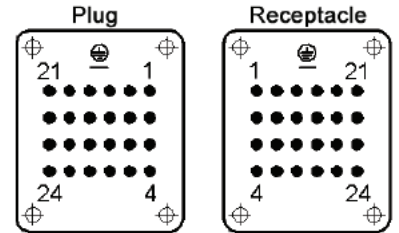
**HDD CRIMP: 2.5 mm<sup>2</sup> (14 AWG)**



### HDD 24 CRIMP TERMINATED: MACHINE CONTACT INSERTS



View from Cable Side



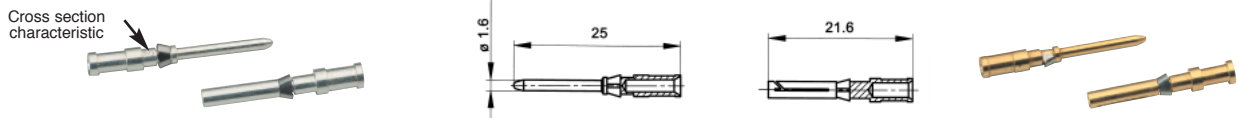
All dimensions are in mm.

Contacts Sold Separately

Plug	Receptacle
11285000	11286000



### MACHINE CONTACTS: DIAMETER 1.6 MM



Bags of 100							
mm <sup>2</sup>	AWG	Silver		Gold		Stripping Length (mm)	# of Marking Tracks
		Pin	Socket	Pin	Socket		
0.14 - 0.37	26 - 22	13162000	13163000	13162500	13163500	8	1
0.5	20	13162100	13163100	13162600	13163600	8	2
0.75 - 1.0	18	13162200	13163200	13162700	13163700	8	3
1.5	16	13162300	13163300	13162800	13163800	8	4
2.5	14	13162400	13163400	13162900	13163900	5.8	5

Part number= 1 contact



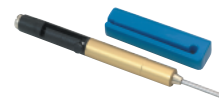
**Crimp Tool**  
11147000



**Crimp Dies**  
11147100



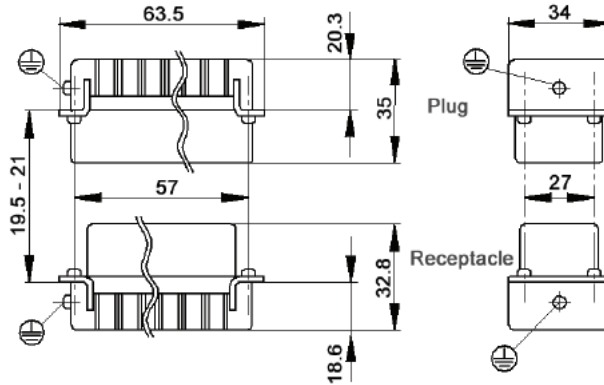
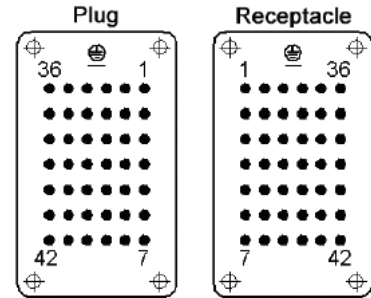
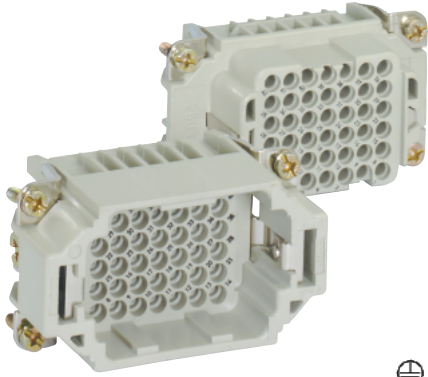
**Locator**  
11147200



**Removal Tool:**  
11161000

### HDD 42 CRIMP TERMINATED: MACHINE CONTACT INSERTS

View from Cable Side



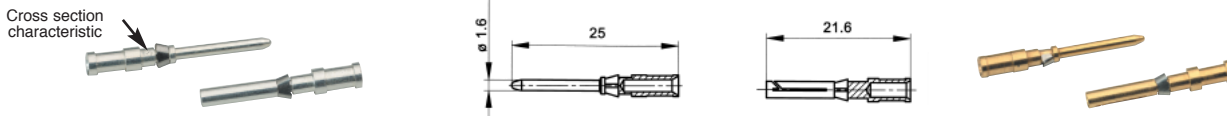
All dimensions are in mm.

Contacts Sold Separately

Plug	Receptacle
11285100	11286100



### MACHINE CONTACTS: DIAMETER 1.6 MM



Bags of 100							
mm <sup>2</sup>	AWG	Silver		Gold		Stripping Length (mm)	# of Marking Tracks
		Pin	Socket	Pin	Socket		
0.14 - 0.37	26 - 22	13162000	13163000	13162500	13163500	8	1
0.5	20	13162100	13163100	13162600	13163600	8	2
0.75 - 1.0	18	13162200	13163200	13162700	13163700	8	3
1.5	16	13162300	13163300	13162800	13163800	8	4
2.5	14	13162400	13163400	13162900	13163900	5.8	5

Part number= 1 contact



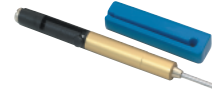
**Crimp Tool**  
11147000



**Crimp Dies**  
11147100



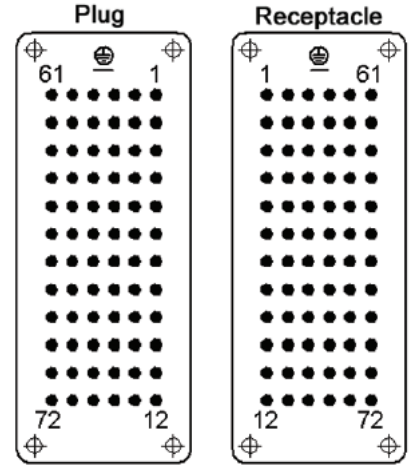
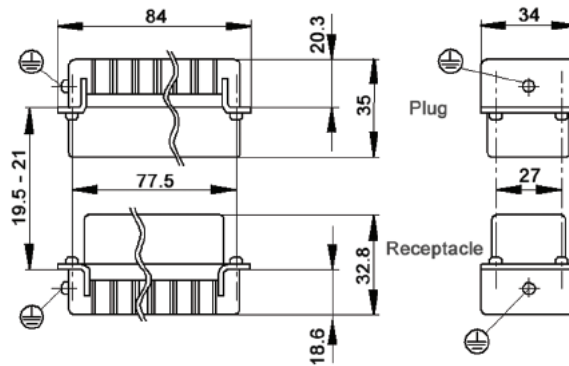
**Locator**  
11147200



**Removal Tool:**  
11161000

### HDD 72 CRIMP TERMINATED: MACHINE CONTACT INSERTS

View from Cable Side



All dimensions are in mm.

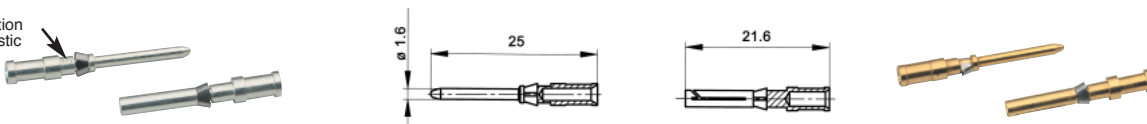
Contacts Sold Separately

Plug	Receptacle
11285200	11286200



### MACHINE CONTACTS: DIAMETER 1.6 MM

Cross section characteristic



Bags of 100

mm <sup>2</sup>	AWG	Silver		Gold		Stripping Length (mm)	# of Marking Tracks
		Pin	Socket	Pin	Socket		
0.14 - 0.37	26 - 22	13162000	13163000	13162500	13163500	8	1
0.5	20	13162100	13163100	13162600	13163600	8	2
0.75 - 1.0	18	13162200	13163200	13162700	13163700	8	3
1.5	16	13162300	13163300	13162800	13163800	8	4
2.5	14	13162400	13163400	13162900	13163900	5.8	5

Part number= 1 contact



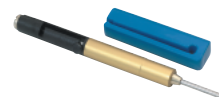
**Crimp Tool**  
11147000



**Crimp Dies**  
11147100



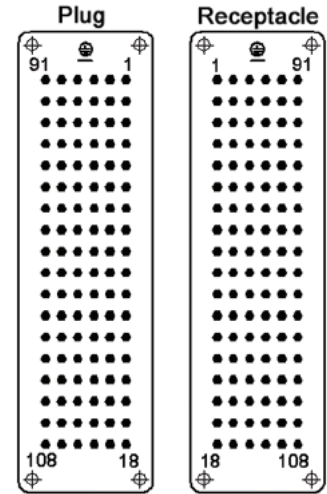
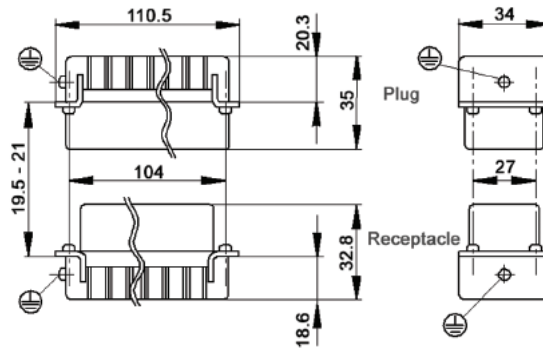
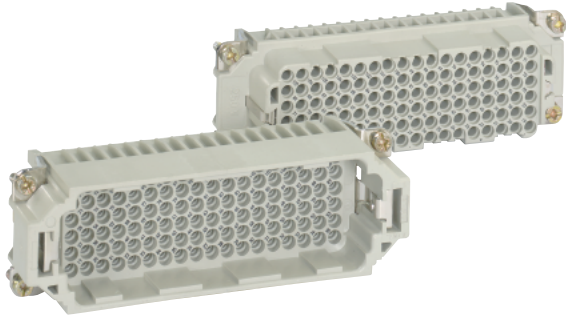
**Locator**  
11147200



**Removal Tool:**  
11161000

### HDD 108 CRIMP TERMINATED: MACHINE CONTACT INSERTS

View from Cable Side



All dimensions are in mm.

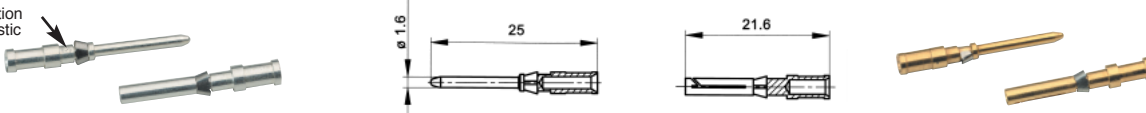


Plug	Receptacle
11285300	11286300

Contacts Sold Separately

### MACHINE CONTACTS: DIAMETER 1.6 MM

Cross section characteristic



Bags of 100

mm <sup>2</sup>	AWG	Silver		Gold		Stripping Length (mm)	# of Marking Tracks
		Pin	Socket	Pin	Socket		
0.14 - 0.37	26 - 22	13162000	13163000	13162500	13163500	8	1
0.5	20	13162100	13163100	13162600	13163600	8	2
0.75 - 1.0	18	13162200	13163200	13162700	13163700	8	3
1.5	16	13162300	13163300	13162800	13163800	8	4
2.5	14	13162400	13163400	13162900	13163900	5.8	5

Part number= 1 contact



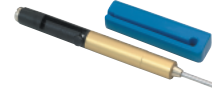
Crimp Tool  
11147000



Crimp Dies  
11147100

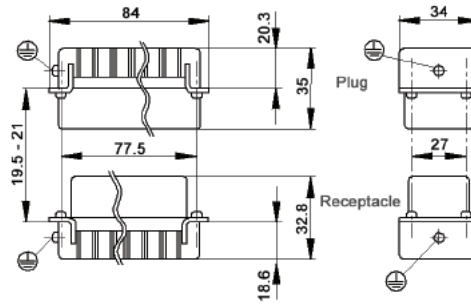
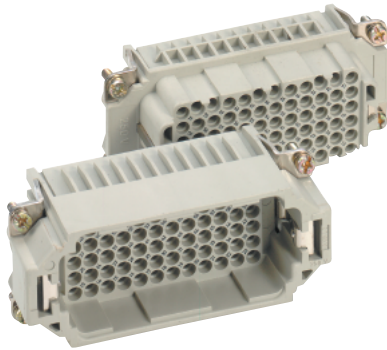


Locator  
11147200



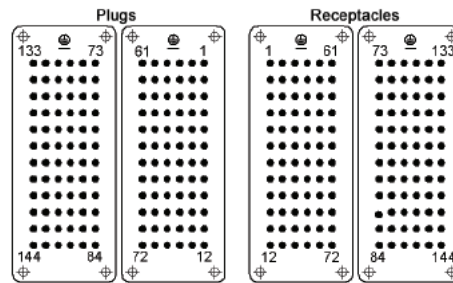
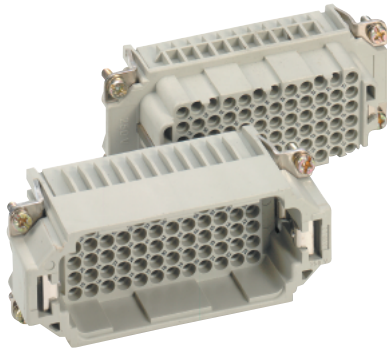
Removal Tool:  
11161000

### HDD 144 CRIMP TERMINATED: MACHINE CONTACT INSERTS



All dimensions are in mm.

View from Cable Side

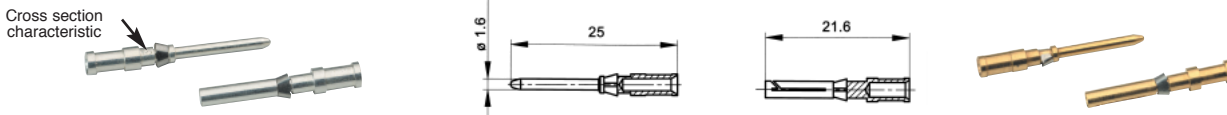


Contacts Sold Separately

Description	Plug	Receptacle
#1-72	11285200	11286200
#73-144	11285400	11286400



### MACHINE CONTACTS: DIAMETER 1.6 MM



Bags of 100							
mm <sup>2</sup>	AWG	Silver		Gold		Stripping Length (mm)	# of Marking Tracks
		Pin	Socket	Pin	Socket		
0.14 - 0.37	26 - 22	13162000	13163000	13162500	13163500	8	1
0.5	20	13162100	13163100	13162600	13163600	8	2
0.75 - 1.0	18	13162200	13163200	13162700	13163700	8	3
1.5	16	13162300	13163300	13162800	13163800	8	4
2.5	14	13162400	13163400	13162900	13163900	5.8	5

Part number= 1 contact



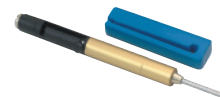
Crimp Tool  
11147000



Crimp Dies  
11147100

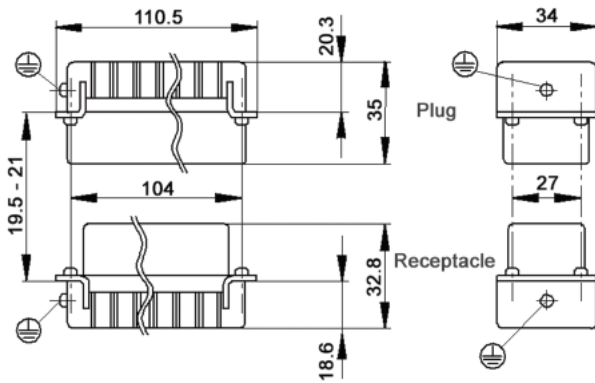


Locator  
11147200

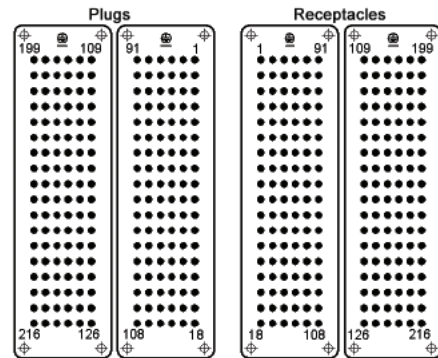


Removal Tool:  
11161000

### HDD 216 CRIMP TERMINATED: MACHINE CONTACT INSERTS



View from Cable Side



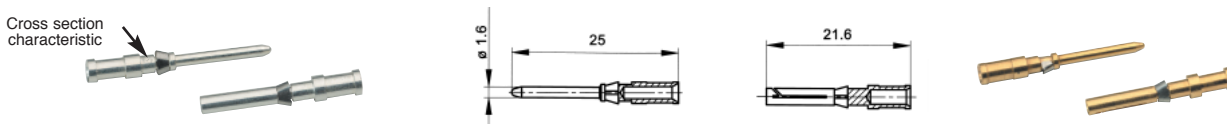
All dimensions are in mm.

Contacts Sold Separately

Description	Plug	Receptacle
#1-108	11285300	11286300
#109-216	11285500	11286500



### MACHINE CONTACTS: DIAMETER 1.6 MM



Bags of 100							
mm <sup>2</sup>	AWG	Silver		Gold		Stripping Length (mm)	# of Marking Tracks
		Pin	Socket	Pin	Socket		
0.14 - 0.37	26 - 22	13162000	13163000	13162500	13163500	8	1
0.5	20	13162100	13163100	13162600	13163600	8	2
0.75 - 1.0	18	13162200	13163200	13162700	13163700	8	3
1.5	16	13162300	13163300	13162800	13163800	8	4
2.5	14	13162400	13163400	13162900	13163900	5.8	5

Part number= 1 contact



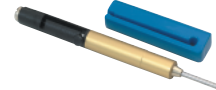
**Crimp Tool**  
11147000



**Crimp Dies**  
11147100



**Locator**  
11147200



**Removal Tool:**  
11161000