

EPIC® HBVE Series

High-Voltage Screw-Terminated Inserts with Two Switch Contacts for Power Applications



EPIC® HBVE series inserts handle higher voltage and are equipped with two switch contacts. These contacts “make” after the working contacts are engaged and “break” before the working contacts disengage. They can be wired as part of an electrical interlock circuit to ensure that power to the working contacts is turned off during connector mating and unmating.

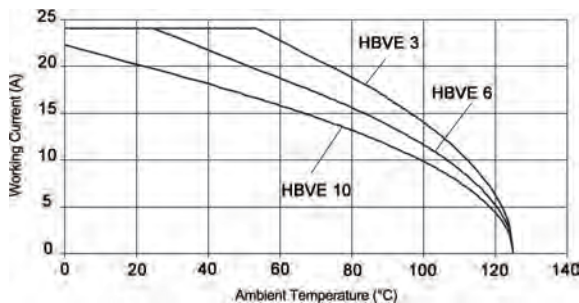
Technical Data

Number of Contacts:	3+2+PE, 6+2+PE, 10+2+PE	Test Voltage:	6 kV
Temperature Range:	-40°C to +100°C	Rated Voltage:	
- Short-term:	up to +125°C	- UL/CSA:	600V
		- IEC:	630V
Pollution Level:	3	Rated Current:	
Mating Cycles:	- Per DIN EN 61984:2008 Service Life Test: Tested to 100 cycles and passed - Per Contact Thermal Test: Useful service up to 500 cycles is possible at rated voltage and current*	- UL/CSA; IEC:	16A
		Wire Size:	20- 14 AWG (0.5-2.5 mm ²)
		Contact Material:	Silver-plated copper alloy
		Contact Resistance:	< 2 mΩ

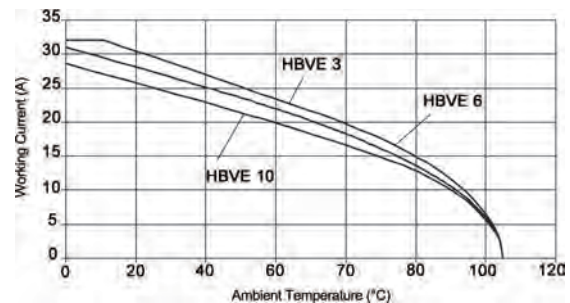
* In dry, non-conductive, non-corrosive environments when protected in a housing rated at least IP54 and disconnected for cycling and maintenance only.

EPIC® HBVE Inserts: Derating Curves

EPIC® HBVE Screw-Terminated
16 AWG (1.5 mm²)

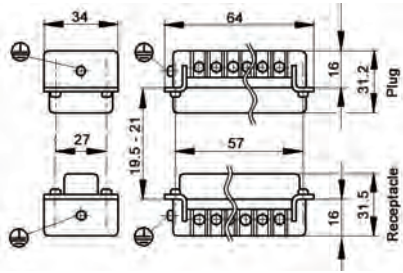
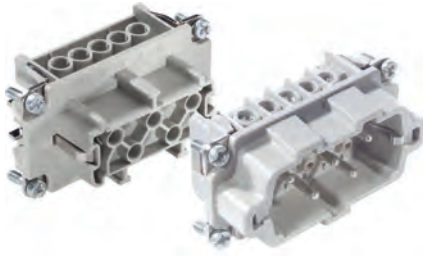


EPIC® HBVE Screw-Terminated
14 AWG (2.5 mm²)



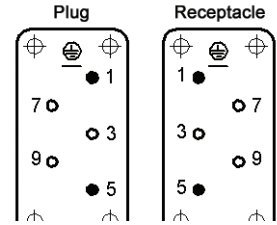
EPIC® HBVE 3 Inserts

Screw-Terminated



all dimensions are in mm.

view from cable side



Description	Plug	Receptacle
Screw-Terminated with Wire Protection	10210010	10211010
Screw-Terminated without Wire Protection	10210110	10211110

Compatible Housing



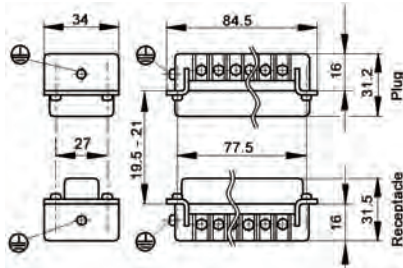
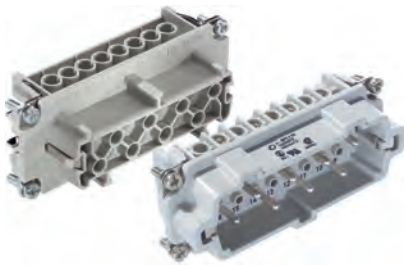
EPIC® HB 10
page 375

Approvals



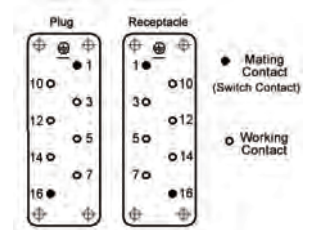
EPIC® HBVE 6 Inserts

Screw-Terminated



all dimensions are in mm.

view from cable side



Description	Plug	Receptacle
Screw-Terminated with Wire Protection	10239010	10240010
Screw-Terminated without Wire Protection	10239110	10240110

Compatible Housing



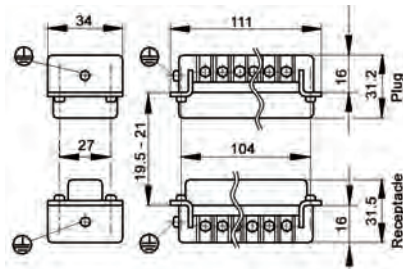
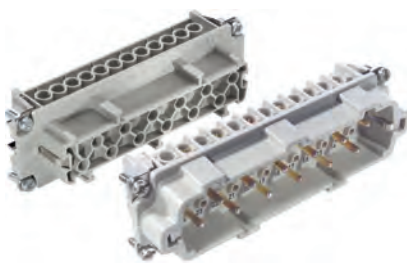
EPIC® HB 16
page 381

Approvals



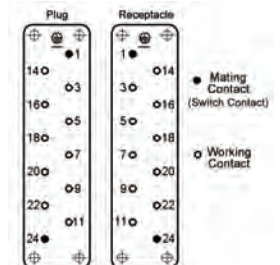
EPIC® HBVE 10 Inserts

Screw-Terminated



all dimensions are in mm.

view from cable side



Description	Plug	Receptacle
Screw-Terminated with Wire Protection	10270010	10271010
Screw-Terminated without Wire Protection	10270110	10271110

Compatible Housing



EPIC® HB 24
page 387

Approvals



Photographs are not to scale and are not true representations of the products in question. If not otherwise specified, all values relating to the product are nominal values. For current information go to our website.