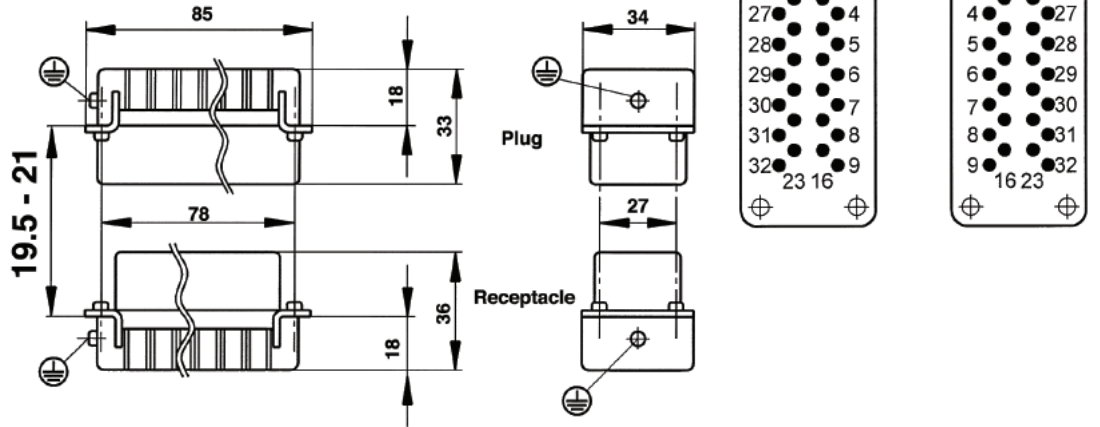
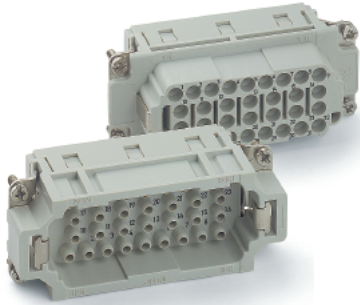


## HEE 32 CRIMP TERMINATED: MACHINE CONTACT INSERTS

View from Cable Side



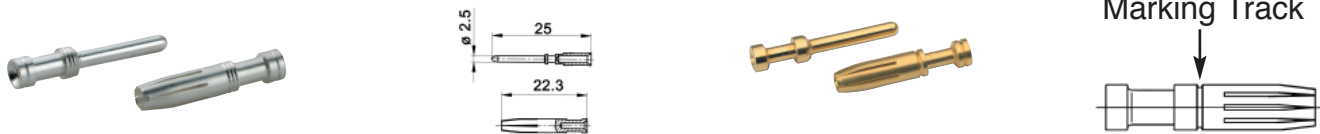
All dimensions are in mm.



Plug	Receptacle
10184400	10185400

Contacts Sold Separately

## MACHINED CONTACTS: DIAMETER 2.5 MM<sup>2</sup>



Bags of 100							
mm <sup>2</sup>	AWG	Silver		Gold		Stripping Length (mm)	# of Marking Tracks
		Pin	Socket	Pin	Socket		
0.5	20	11190000	11195000	11192000	11197000	Pin=7.4, Socket =7.3	-
.75 - 1.0	18	11190100	11195100	11192100	11197100	Pin=7.4, Socket =7.3	1
1.5	16	11190200	11195200	11192200	11197200	Pin=7.4, Socket =7.3	2
2.5	14	11190300	11195300	-	-	Pin=7.4, Socket =7.3	3
4.0	12	11190400	11195400	-	-	Pin=7.4, Socket =7.3	-

Part number= 1 contact



**Crimp Tool**  
11147000



**Crimp Dies**  
11147100



**Locator**  
11147200



**Removal Tool:**  
11182500