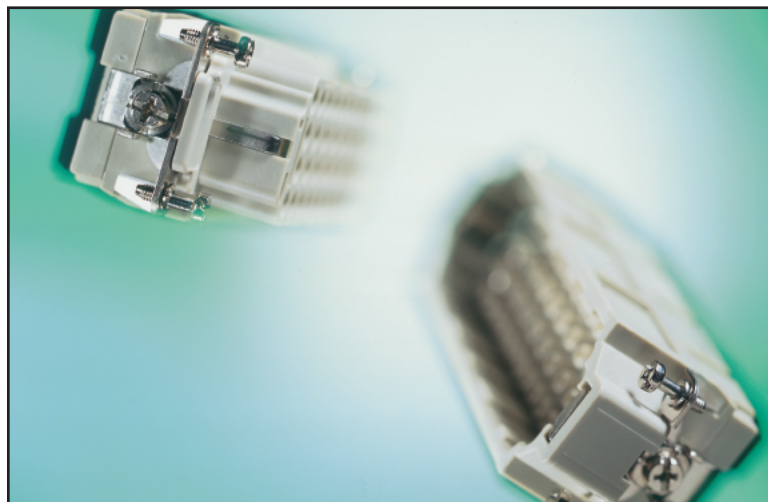


The EPIC® HEE Series connector inserts are a high-density companion to the popular EPIC® HBE Series. Offering the same voltage and current ratings (600 V AC, 16 Amps), they provide a significant increase in contact density (67% - 100% increase) within the same footprint dimensions as an equivalent size HBE connector. They are ideal for applications in the automotive industries, and any other industrial application requiring high density contacts.



### TECHNICAL DATA

**Number of Contacts:** 10, 18, 32, 46, 64 (2x32), 92 (2X46) (+PE)

**Rated Voltage:** VDE: 500V  
UL: 600V  
CSA: 600V

**Rated Current:** 16A

**Temperature Range:** -40°C to +125°C

**Pollution Degree:** 3

**Test Voltage:** 6 kV

**Termination Type:** mm<sup>2</sup> AWG  
**Machined Crimp:** 0.5 - 4.0 mm<sup>2</sup> 20 - 12

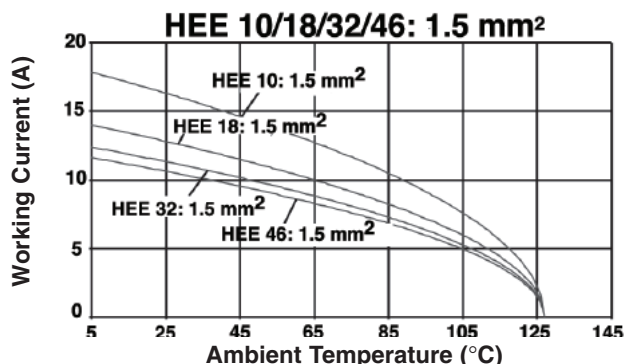
**Contacts:**  
**Material:** Copper alloy, silver plated/ gold plated

**Mating Cycles:** 100 (higher mating cycles depending on the application)

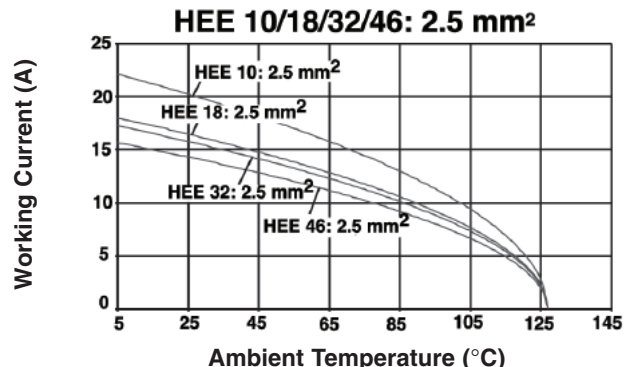
**Contact Resistance:** ≤ 2 mΩ

### HEE INSERTS: DERATING CURVES

HEE CRIMP MACHINED: 1.5 mm<sup>2</sup> (16 AWG)

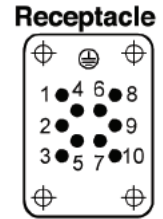
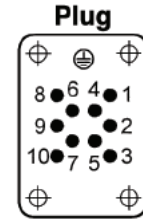
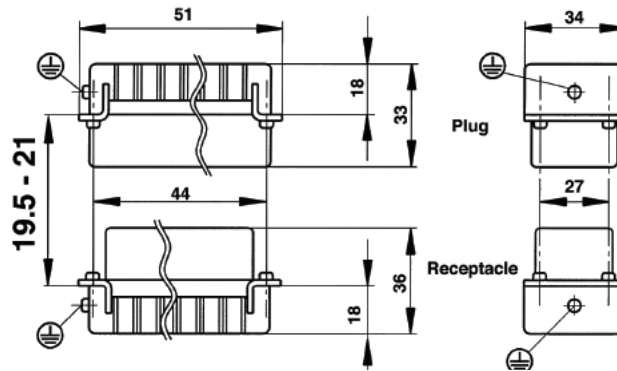
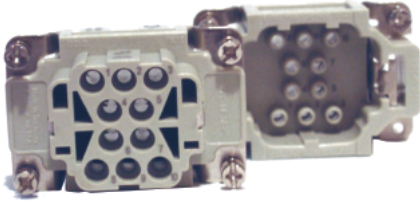


HEE CRIMP MACHINED: 2.5 mm<sup>2</sup> (14 AWG)



## HEE 10 CRIMP TERMINATED: MACHINE CONTACT INSERTS

View from Cable Side



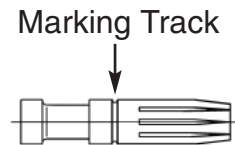
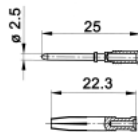
All dimensions are in mm.



Plug	Receptacle
10180400	10181400

Contacts Sold Separately

## MACHINED CONTACTS: DIAMETER 2.5 MM<sup>2</sup>



Bags of 100							
mm <sup>2</sup>	AWG	Silver		Gold		Stripping Length (mm)	# of Marking Tracks
		Pin	Socket	Pin	Socket		
0.5	20	11190000	11195000	11192000	11197000	Pin=7.4, Socket =7.3	-
.75 - 1.0	18	11190100	11195100	11192100	11197100	Pin=7.4, Socket =7.3	1
1.5	16	11190200	11195200	11192200	11197200	Pin=7.4, Socket =7.3	2
2.5	14	11190300	11195300	-	-	Pin=7.4, Socket =7.3	3
4.0	12	11190400	11195400	-	-	Pin=7.4, Socket =7.3	-

Part number= 1 contact



Crimp Tool  
11147000



Crimp Dies  
11147100



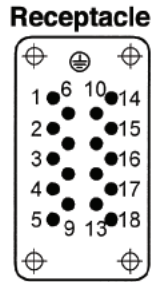
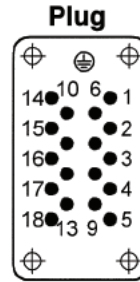
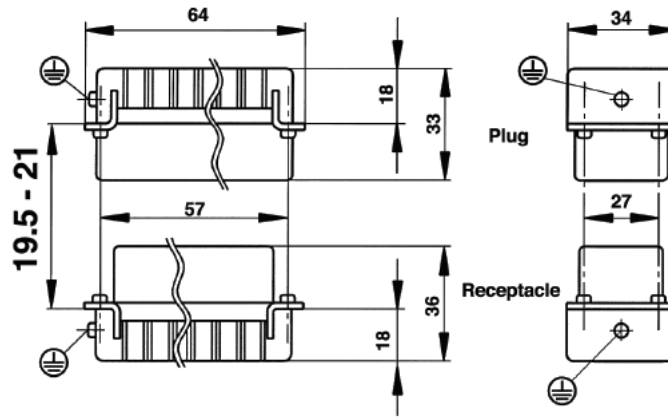
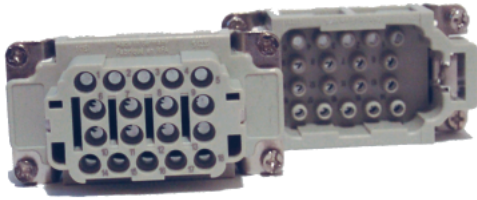
Locator  
11147200



Removal Tool:  
11182500

### HEE 18 CRIMP TERMINATED: MACHINE CONTACT INSERTS

View from Cable Side



All dimensions are in mm.



Plug	Receptacle
10182400	10183400

Contacts Sold Separately

### MACHINED CONTACTS: DIAMETER 2.5 MM<sup>2</sup>



Bags of 100							
mm <sup>2</sup>	AWG	Silver		Gold		Stripping Length (mm)	# of Marking Tracks
		Pin	Socket	Pin	Socket		
0.5	20	11190000	11195000	11192000	11197000	Pin=7.4, Socket =7.3	-
.75 - 1.0	18	11190100	11195100	11192100	11197100	Pin=7.4, Socket =7.3	1
1.5	16	11190200	11195200	11192200	11197200	Pin=7.4, Socket =7.3	2
2.5	14	11190300	11195300	-	-	Pin=7.4, Socket =7.3	3
4.0	12	11190400	11195400	-	-	Pin=7.4, Socket =7.3	-

Part number= 1 contact



**Crimp Tool**  
11147000



**Crimp Dies**  
11147100



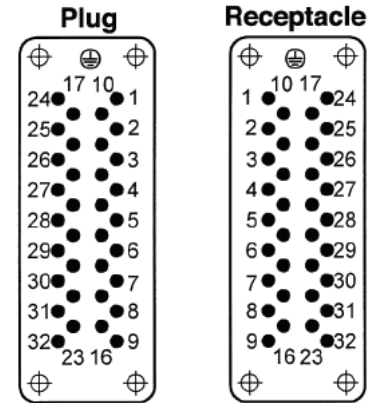
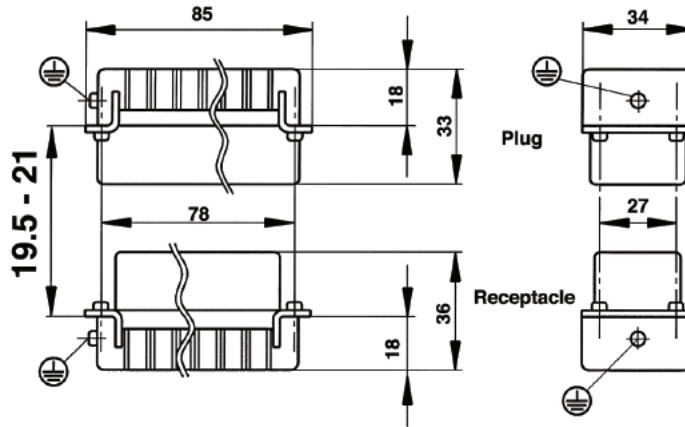
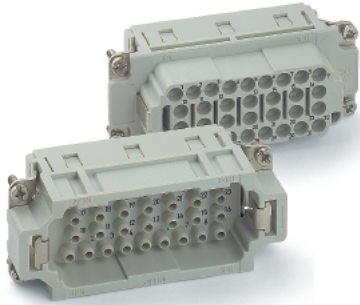
**Locator**  
11147200



**Removal Tool:**  
11182500

## HEE 32 CRIMP TERMINATED: MACHINE CONTACT INSERTS

View from Cable Side



All dimensions are in mm.

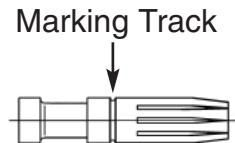
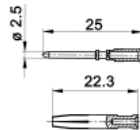


HBE 16  
Pg 362

Plug	Receptacle
10184400	10185400

Contacts Sold Separately

## MACHINED CONTACTS: DIAMETER 2.5 MM<sup>2</sup>



Bags of 100							
mm <sup>2</sup>	AWG	Silver		Gold		Stripping Length (mm)	# of Marking Tracks
		Pin	Socket	Pin	Socket		
0.5	20	11190000	11195000	11192000	11197000	Pin=7.4, Socket =7.3	-
.75 - 1.0	18	11190100	11195100	11192100	11197100	Pin=7.4, Socket =7.3	1
1.5	16	11190200	11195200	11192200	11197200	Pin=7.4, Socket =7.3	2
2.5	14	11190300	11195300	-	-	Pin=7.4, Socket =7.3	3
4.0	12	11190400	11195400	-	-	Pin=7.4, Socket =7.3	-

Part number= 1 contact



Crimp Tool  
11147000



Crimp Dies  
11147100

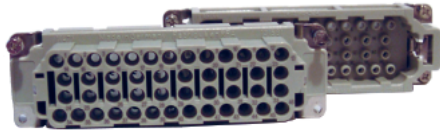


Locator  
11147200

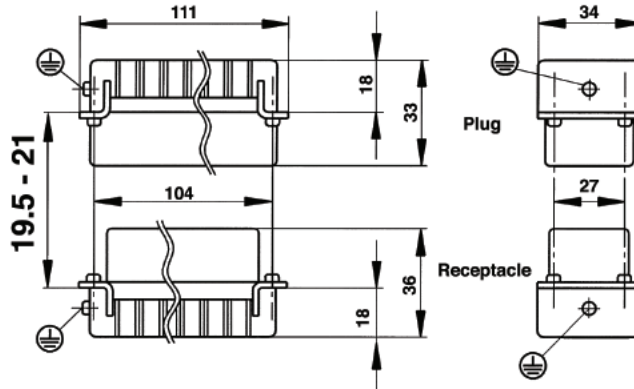
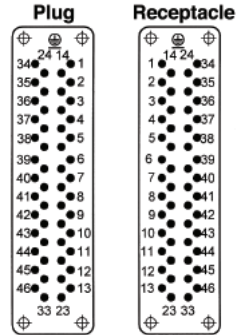


Removal Tool:  
11182500

### HEE 46 CRIMP TERMINATED: MACHINE CONTACT INSERTS



View from Cable Side



All dimensions are in mm.



Plug	Receptacle
10186400	10187400

Contacts Sold Separately

### MACHINED CONTACTS: DIAMETER 2.5 MM<sup>2</sup>



Bags of 100							
mm <sup>2</sup>	AWG	Silver		Gold		Stripping Length (mm)	# of Marking Tracks
		Pin	Socket	Pin	Socket		
0.5	20	11190000	11195000	11192000	11197000	Pin=7.4, Socket =7.3	-
.75 - 1.0	18	11190100	11195100	11192100	11197100	Pin=7.4, Socket =7.3	1
1.5	16	11190200	11195200	11192200	11197200	Pin=7.4, Socket =7.3	2
2.5	14	11190300	11195300	-	-	Pin=7.4, Socket =7.3	3
4.0	12	11190400	11195400	-	-	Pin=7.4, Socket =7.3	-

Part number= 1 contact



**Crimp Tool**  
11147000



**Crimp Dies**  
11147100

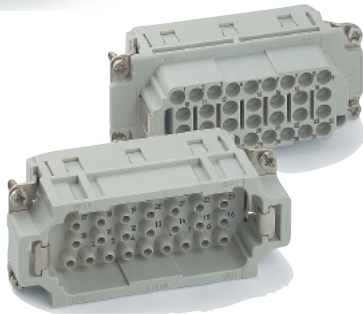
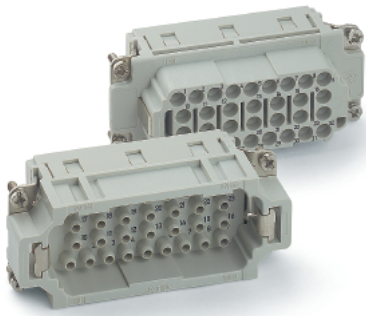


**Locator**  
11147200

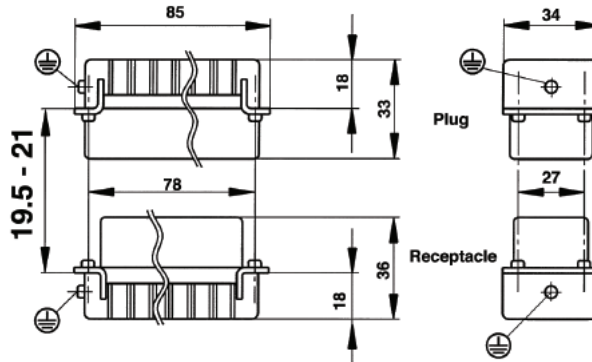


**Removal Tool:**  
11182500

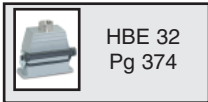
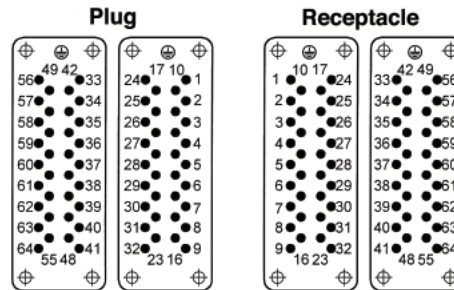
## HEE 64 CRIMP TERMINATED: MACHINE CONTACT INSERTS



View from Cable Side



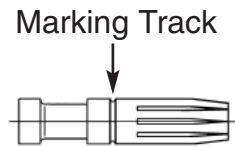
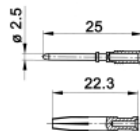
All dimensions are in mm.



Description	Plug	Receptacle
#1 - 32	10184400	10185400
#33 - 64	10184500	10185500

Contacts Sold Separately

## MACHINED CONTACTS: DIAMETER 2.5 MM<sup>2</sup>



Bags of 100							
mm <sup>2</sup>	AWG	Silver		Gold		Stripping Length (mm)	# of Marking Tracks
		Pin	Socket	Pin	Socket		
0.5	20	11190000	11195000	11192000	11197000	Pin=7.4, Socket =7.3	-
.75 - 1.0	18	11190100	11195100	11192100	11197100	Pin=7.4, Socket =7.3	1
1.5	16	11190200	11195200	11192200	11197200	Pin=7.4, Socket =7.3	2
2.5	14	11190300	11195300	-	-	Pin=7.4, Socket =7.3	3
4.0	12	11190400	11195400	-	-	Pin=7.4, Socket =7.3	-

Part number= 1 contact



Crimp Tool  
11147000



Crimp Dies  
11147100

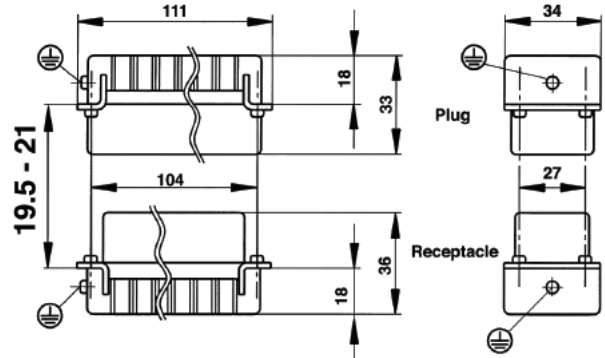


Locator  
11147200



Removal Tool:  
11182500

### HEE 92 CRIMP TERMINATED: MACHINE CONTACT INSERTS



All dimensions are in mm.

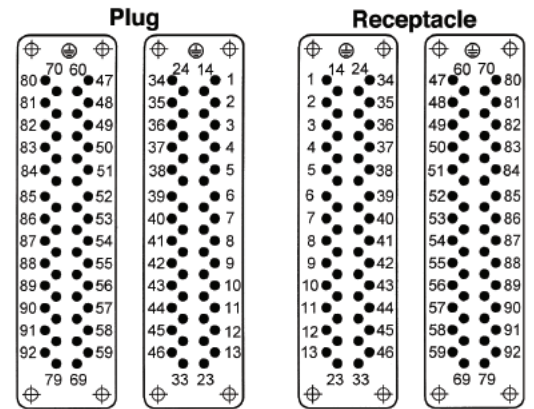
View from Cable Side



HBE 48  
Pg 376

Contacts Sold Separately

Description	Plug	Receptacle
#1 - 32	10186400	10187400
#33 - 64	10186500	10187500



### MACHINED CONTACTS: DIAMETER 2.5 MM<sup>2</sup>



mm <sup>2</sup>	AWG	Silver		Gold		Stripping Length (mm)	# of Marking Tracks
		Pin	Socket	Pin	Socket		
0.5	20	11190000	11195000	11192000	11197000	Pin=7.4, Socket =7.3	-
.75 - 1.0	18	11190100	11195100	11192100	11197100	Pin=7.4, Socket =7.3	1
1.5	16	11190200	11195200	11192200	11197200	Pin=7.4, Socket =7.3	2
2.5	14	11190300	11195300	-	-	Pin=7.4, Socket =7.3	3
4.0	12	11190400	11195400	-	-	Pin=7.4, Socket =7.3	-

Part number= 1 contact



Crimp Tool  
11147000



Crimp Dies  
11147100



Locator  
11147200



Removal Tool:  
11182500