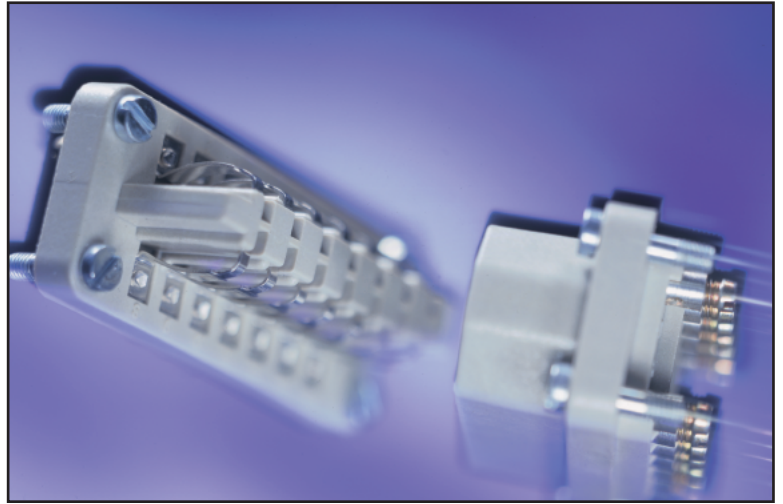


The STA inserts with solid spring designed contacts are used extensively in the construction of devices, in control units, laboratories, and withdrawable unit design. These inserts are available with screw or solder termination which fit into the HA Series Housings.

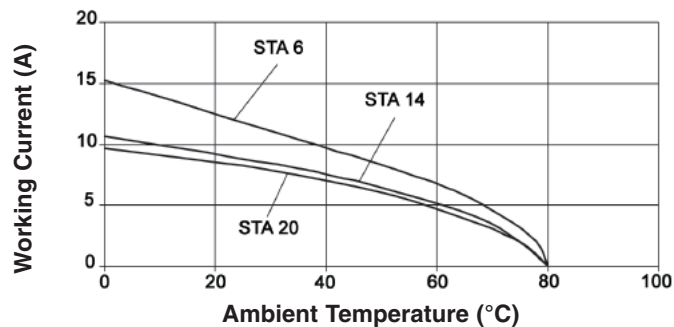


### TECHNICAL DATA

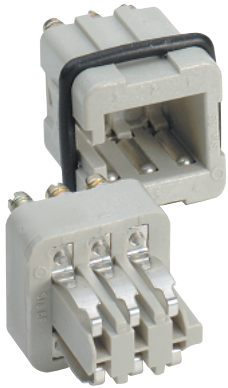
<b>Number of Contacts:</b>	6, 14, 20, 40	<b>Termination Type:</b>	Solder termination: up to 1.5 mm <sup>2</sup> Screw termination: 0.5 - 1.5 mm <sup>2</sup>
<b>Rated Voltage:</b>	VDE: 60V EPIC STA 6 - 20 UL: 48V EPIC STA 6 - 20 CSA: 48V EPIC STA 6 - 20	<b>Temperature Range:</b>	-40°C to +80°C
<b>Rated Current:</b>	VDE: 10A EPIC STA 6 - 20 UL: 10A EPIC STA 6 - 20 CSA: 10A EPIC STA 6 - 20	<b>Contacts:</b>	Copper alloy, silver plated
<b>Pollution Level:</b>	2	<b>Contact Resistance:</b>	<2mOhm
<b>Test Voltage:</b>	1.0 kV	<b>Mating Cycles:</b>	100 (higher mating cycles depends on the application)

### STA INSERTS: DERATING CURVES

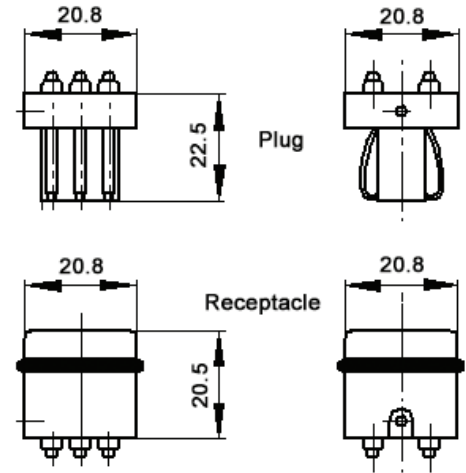
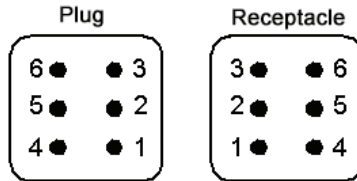
#### STA: 1.0 mm<sup>2</sup> (18 AWG)



### STA 6 SCREW TERMINATED INSERTS

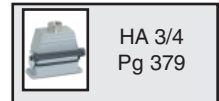


View from cable side

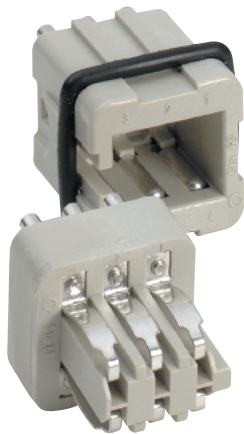


All dimensions are in mm.

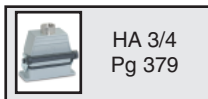
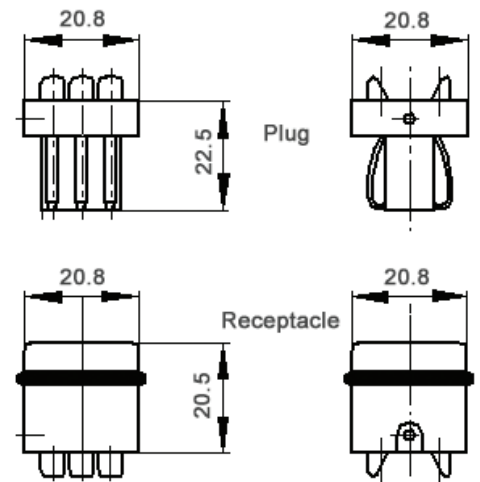
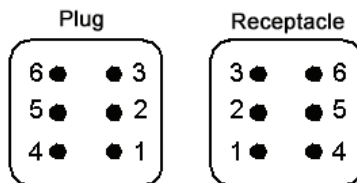
Description	Plug	Receptacle
Screw Termination	10488100	10486100



### SOLDER TERMINATED INSERTS

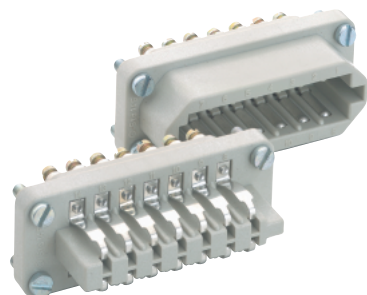


View from cable side

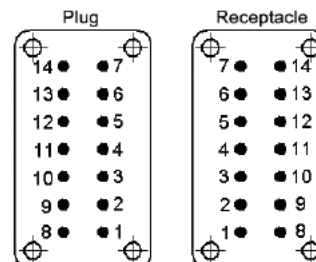
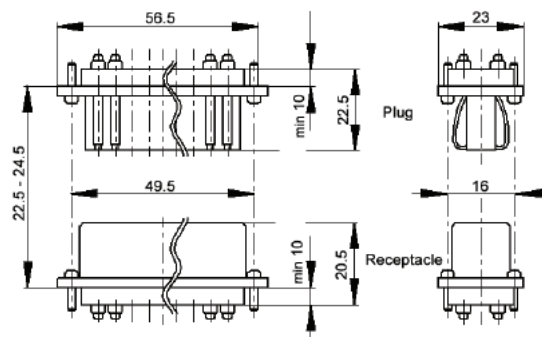


Description	Plug	Receptacle
Solder Termination	10487200	10485200

### STA 14 SCREW TERMINATED INSERTS



View from cable side

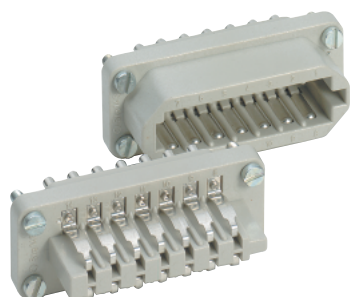


All dimensions are in mm.

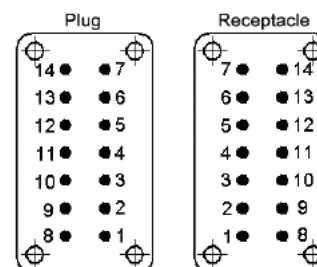
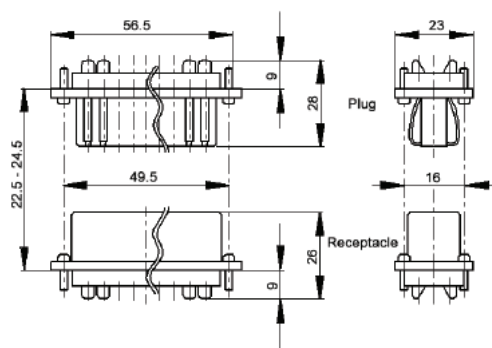


Description	Plug	Receptacle
Screw Termination	10493100	10491100

### STA 14 SOLDER TERMINATED INSERTS



View from cable side

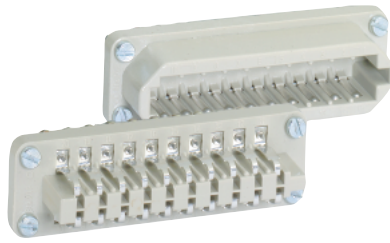


All dimensions are in mm.

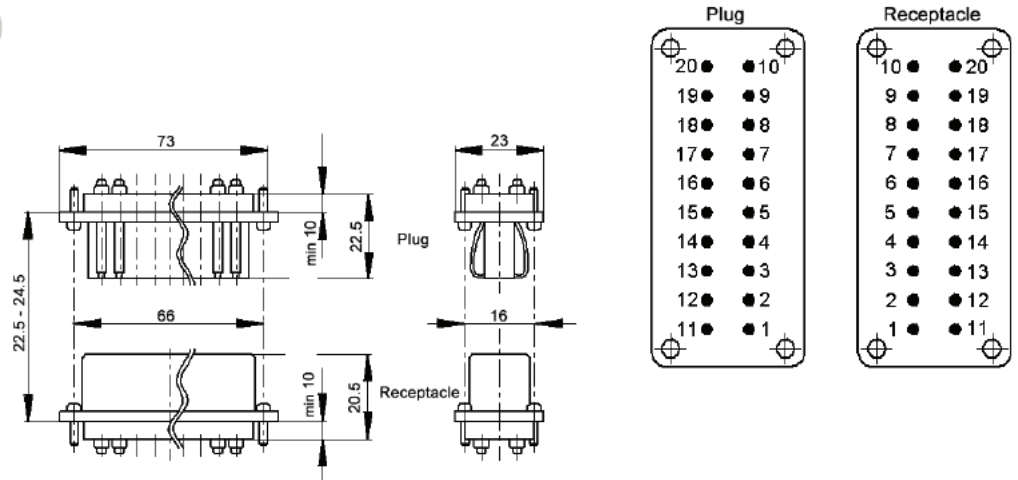


Description	Plug	Receptacle
Solder Termination	10492200	10490200

### STA 20 SCREW TERMINATED INSERTS



View from cable side

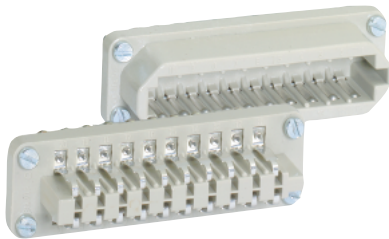


All dimensions are in mm.

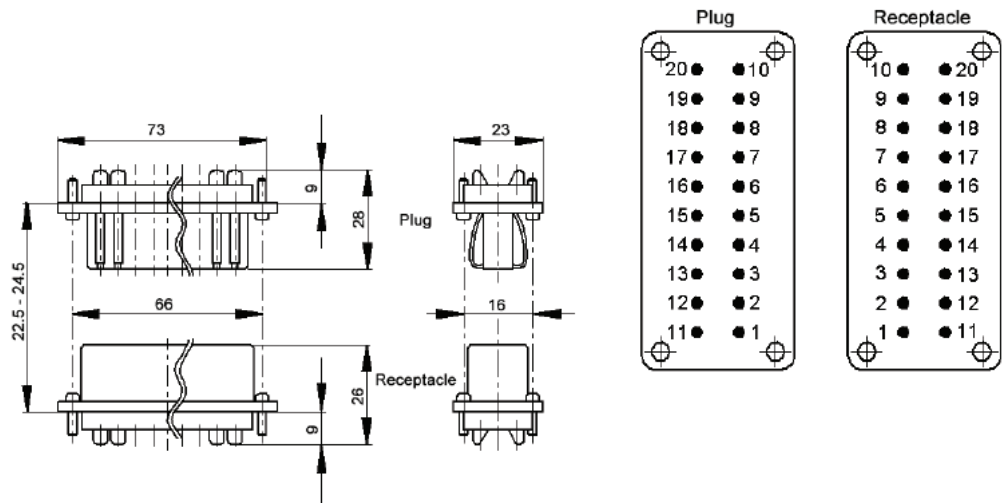


Description	Plug	Receptacle
Screw Termination	10503100	10501100

### STA 20 SOLDER TERMINATED INSERTS



View from cable side

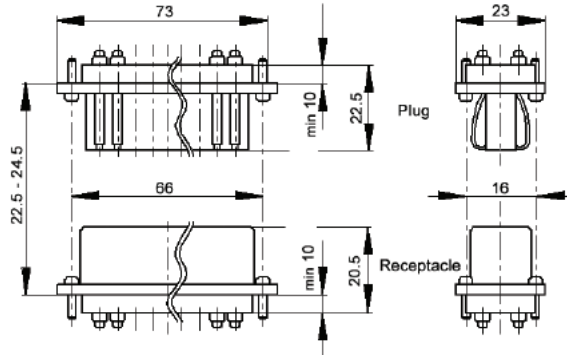
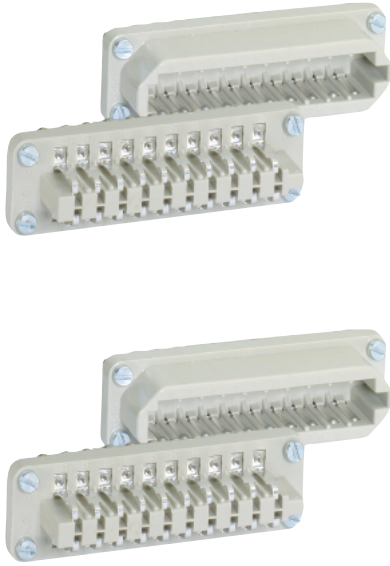


All dimensions are in mm.

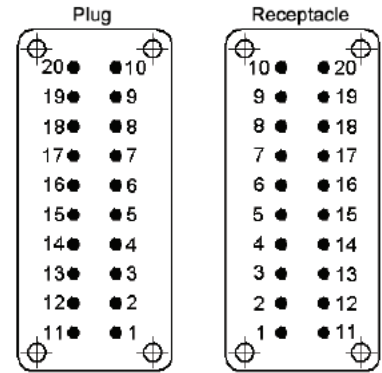
Description	Plug	Receptacle
Solder Termination	10502200	10500200



### STA 40 SCREW TERMINATED INSERTS



View from cable side

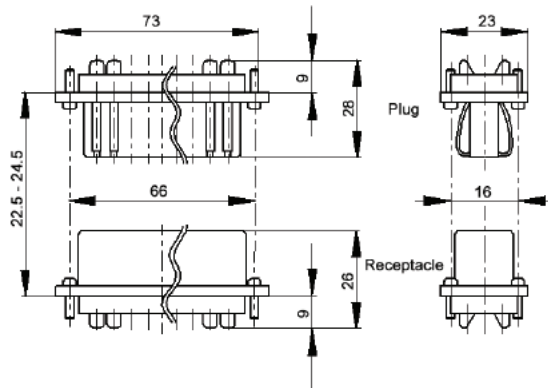
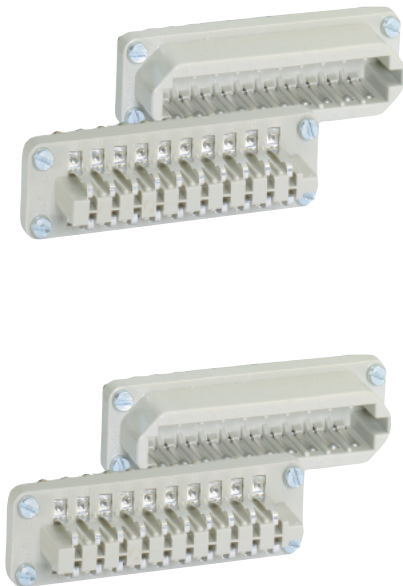


All dimensions are in mm.

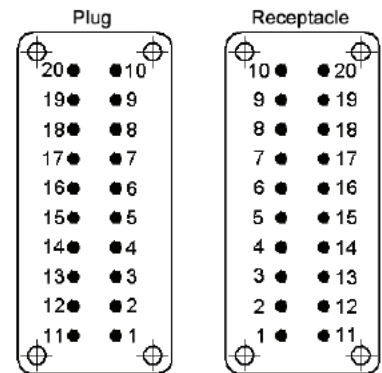
Description	Plug	Receptacle
Screw Termination (2X)	10503100	10501100



### STA 40 SOLDER TERMINATED INSERTS



View from cable side



All dimensions are in mm.

Description	Plug	Receptacle
Solder Termination (2X)	10502200	10500200

