

The EPIC® HQ 5 insert fills the gap between the smallest configuration EPIC® HA and EPIC® HD connector inserts. It provides more contacts (5+PE) in the same housing space than the EPIC® HA 3 and HA 4 inserts, with a higher current capability (16A vs. 10A) than the EPIC® HD 7 and HD 8 inserts. They are ideal for applications in the transportation and automotive industries, and in many other industrial applications.

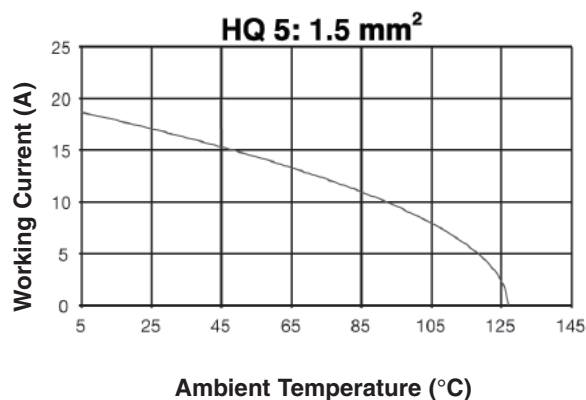


TECHNICAL DATA

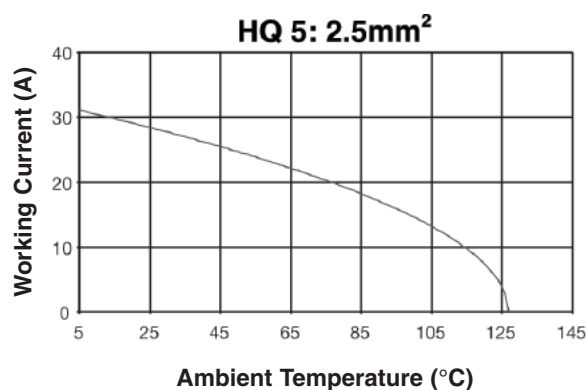
Number of Contacts:	5 (+PE)	Termination Type:	
Rated Voltage:	UL/CSA: 600V VDE: 400V	Machined Crimp:	0.5 - 2.5 mm ² 20 - 14 AWG
Rated Current:	UL/CSA: 16A	Contacts:	
Temperature Range:	-40°C to +125°C	Material:	Copper alloy, silver plated/gold plated
Pollution Degree:	3	Mating Cycles:	100 (higher mating cycles depending on the application)
Test Voltage:	4 kV	Contact Resistance:	≤ 2 mΩ

HQ INSERTS: DERATING CURVES

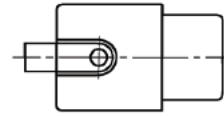
HQ 5: 1.5 mm² (16 AWG)



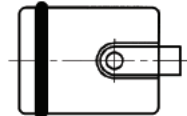
HQ 5: 2.5 mm² (14 AWG)



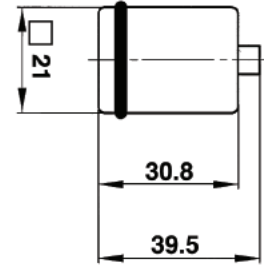
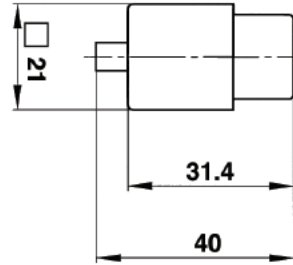
HQ 5 CRIMP TERMINATED INSERTS



Receptacle

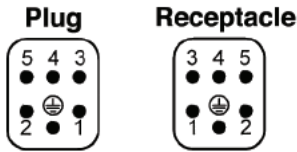


Plug



All dimensions are in mm.

View from cable side



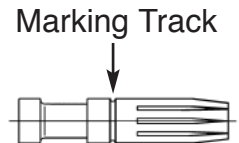
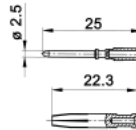
Description	Plug	Receptacle
Crimp Termination	10431500	10432500

Contacts Sold Separately



10436500: HQ5 Coding Pin (with contact loss)

MACHINED CONTACTS: DIAMETER 2.5 MM²



Bags of 100							
mm ²	AWG	Silver		Gold		Stripping Length (mm)	# of Marking Tracks
		Pin	Socket	Pin	Socket		
0.5	20	11190000	11195000	11192000	11197000	Pin=7.4, Socket =7.3	-
.75 - 1.0	18	11190100	11195100	11192100	11197100	Pin=7.4, Socket =7.3	1
1.5	16	11190200	11195200	11192200	11197200	Pin=7.4, Socket =7.3	2
2.5	14	11190300	11195300	-	-	Pin=7.4, Socket =7.3	3
4.0	12	11190400	11195400	-	-	Pin=7.4, Socket =7.3	-

Part number= 1 contact



Crimp Tool
11147000



Crimp Dies
11147100



Locator
11147200



Removal Tool:
11182500