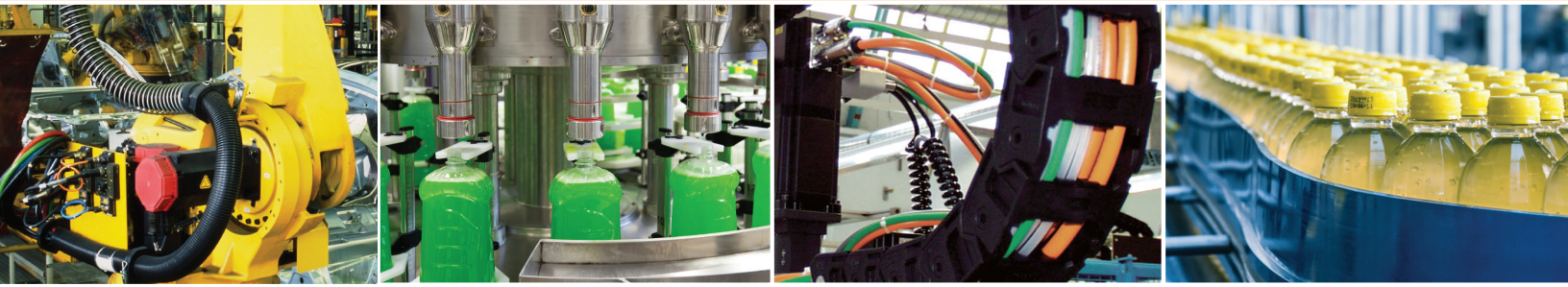


make the right connection



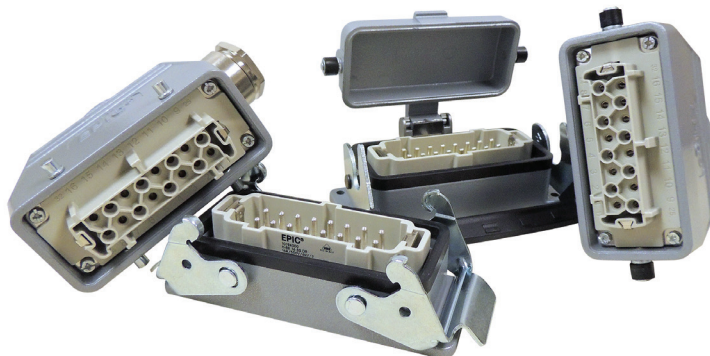
EPIC® Connector Kits



LAPP GROUP

Standard EPIC® HBE Kits

Kit includes all components needed to make electrical connection. Inserts are screw terminated with wire protection. Rated current 16 amp. Screw termination wire gauge range 20-14 AWG. Hoods and bases standard grey. Meets IP65, NEMA 4 and NEMA 12.



Lapp Part Number	Termination Type	Number of Contacts	Entry Size
Side Entry Hoods with Single Lever Panel Mount Base with Cover			
61000030	Screw	6	1/2" NPT
61000031	Screw	6	1/2" NPT
61000032	Screw	10	1/2" NPT
61000033	Screw	16	3/4" NPT
61000034	Screw	24	3/4" NPT
61000035	Screw	48	1-1/4" NPT
Top Entry Hoods with Single Lever Panel Mount Base with Cover			
61000036	Screw	6	1/2" NPT
61000037	Screw	10	1/2" NPT
61000038	Screw	16	1/2" NPT
61000039	Screw	24	3/4" NPT
61000040	Screw	48	1-1/4" NPT
Side Entry Hood with Double Lever Panel Mount Base with Cover			
61000041	Screw	10	1/2" NPT
61000042	Screw	16	3/4" NPT
61000043	Screw	24	3/4" NPT
Top Entry Hood with Double Lever Panel Mount Base with Cover			
61000044	Screw	10	1/2" NPT
61000045	Screw	16	3/4" NPT
61000046	Screw	24	3/4" NPT
61000047	Screw	32	1-1/4" NPT

Technical data for HBE Series Inserts

Temperature Range:	-40°C to +100°C
Voltage:	600V
Current:	16 Amp/Contact
Wire Size:	20-14 AWG

Approvals



Vibration Resistant EPIC® Connector Kits

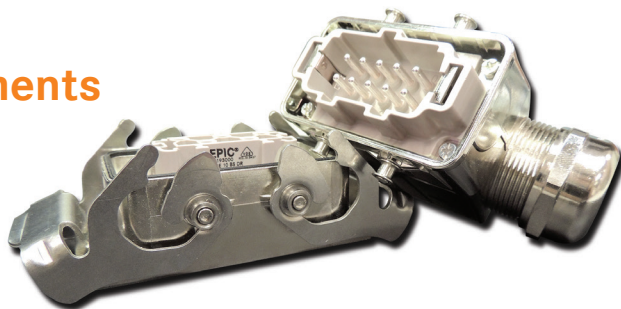
Kit includes all components needed to make electrical connection. Inserts have vibration resistant cage-clamp termination. Rated current 16 amp. Wire range 20-14 AWG. Hoods and bases standard gray. Meets IP65, NEMA 4, NEMA 12.



Lapp Part Number	Termination Type	Number of Contacts	Entry Size
Side Entry Hood with Single Lever Panel Mount Base with Cover			
6100048	Cage Clamp	6	1/2" NPT
Top Entry Hood with Single Lever Panel Mount Base with Cover			
6100049	Cage Clamp	6	1/2" NPT
Side Entry Hood with Double Lever Panel Mount Base with Cover			
6100050	Cage Clamp	10	1/2" NPT
6100051	Cage Clamp	16	3/4" NPT
6100052	Cage Clamp	24	3/4" NPT
Top Entry Hood with Double Lever Panel Mount Base with Cover			
6100053	Cage Clamp	10	1/2" NPT
6100054	Cage Clamp	16	3/4" NPT
6100055	Cage Clamp	24	3/4" NPT

EPIC® ULTRA Kits for Harsh Environments

Kit includes all components needed to make electrical connection. Inserts are screw terminated with wire protection. Rated current 16 amp. Screw termination wire gauge range 20-14 AWG. Housing and base material is a corrosion-resistant, nickel-plated die cast zinc. Stainless steel latches and bolts. Integral strain relief accommodates cable diameter range of 6-21 mm depending on housing style. 360° copper EMC brush within strain relief virtually eliminates EMF. Meets IP65, NEMA 4, NEMA 4X, NEMA 12.



Lapp Part Number	Termination Type	Number of Contacts	Entry Size
Side Entry Hood with Single Lever Panel Mount Base with Cover			
61000056	Screw	6	6-13 mm OD
Side Entry Hood with Double Lever Panel Mount Base with Cover			
61000057	Screw	10	6-13 mm OD
61000058	Screw	16	11-21 mm OD
61000059	Screw	24	11-21 mm OD



ÖLFLEX®

UNITRONIC®

EPIC®

SKINTOP®

ETHERLINE®

HITRONIC®

SILVYN®

FLEXIMARK®

For more information or to connect with your local

Lapp Group representative please visit

www.lappusa.com/epickits



LAPP GROUP

