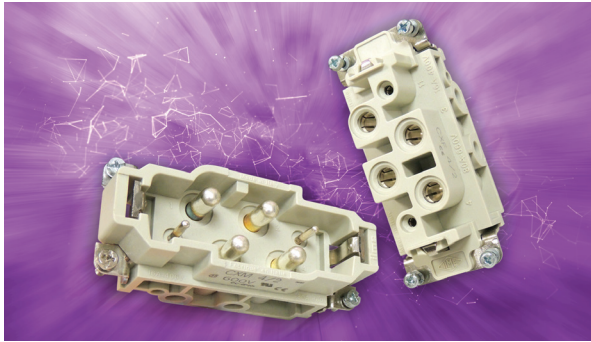


# EPIC® Power K series

Screw-terminated inserts for combination power & control applications



EPIC® Power K series inserts provide a combination of power contacts (up to 80A) and signal contacts (up to 16A) in a single insert package. This can save valuable panel space by allowing one connector to do the job of two. These inserts fit into EPIC® HB series housings.

### Technical data

**Number of contacts:** 4 power + 0, 2, 8 signal

**Temperature range:** -40°C to +125°C

**Pollution level:** 3

**Rated voltage:**

- UL/CSA:
- power: 830V
- signal: 400V

**Test voltage:**

- 4 power + 0 signal: 6 kV
- 4 power + 2 signal: 6 kV / 4 kV
- 4 power + 8 signal: 4 kV

**Rated current:**

- 4 power + 0 signal: 80A; 830V
- 4 power + 2 signal: 80A, 16A; 830/400V
- 4 power + 8 signal: 80A, 16A; 400V

**Wire size:**

- screw termination:
- power contacts: 16 - 6 AWG (1.5 - 16 mm<sup>2</sup>)
- signal contacts: 20 - 14 AWG (0.5 - 2.5 mm<sup>2</sup>)

**Material:**

- molding: fiberglass-reinforced thermoplastic resin
- contacts: hard silver-plated copper alloy

**Contact resistance:**

- principal contacts: < 0.3 mΩ
- auxiliary contacts: < 1 mΩ

**Approvals:**

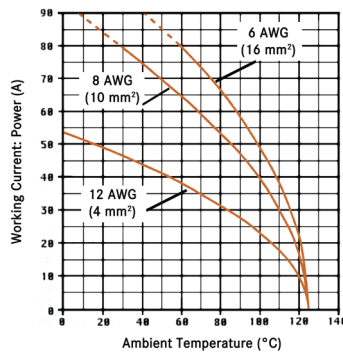
- UL: File #E115072  
File #E75770
- CSA: File #LR82270

\* In dry, non-conductive, non-corrosive environments when protected in a housing rated at least IP54 and disconnected for cycling and maintenance only.

## EPIC® Power K derating curves

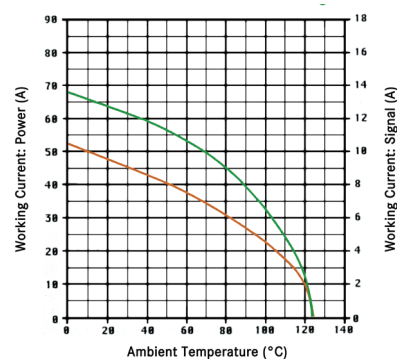
### EPIC® Power K 4/0

12 - 6 AWG (4 - 16 mm<sup>2</sup>) power  
0 signal



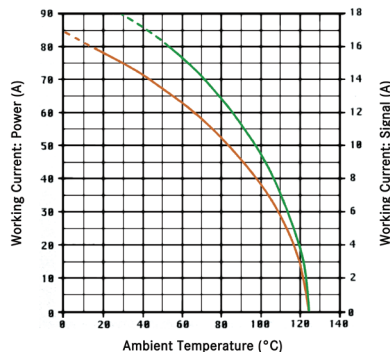
### EPIC® Power K 4/2

12 AWG (4 mm<sup>2</sup>) power  
18 AWG (1 mm<sup>2</sup>) signal

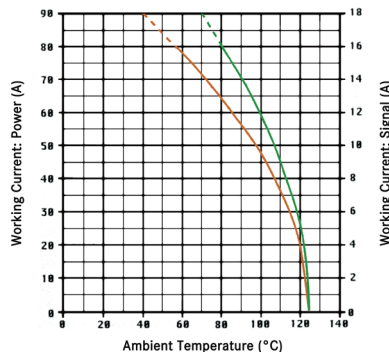


# EPIC® Power K derating curves

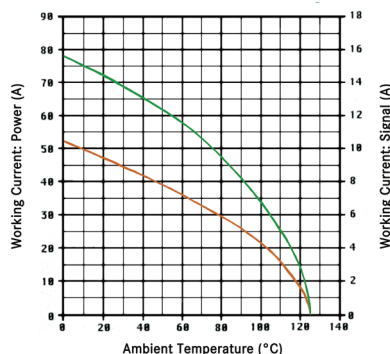
EPIC® Power K 4/2  
 8 AWG (10 mm<sup>2</sup>) power  
 16 AWG (1.5 mm<sup>2</sup>) signal



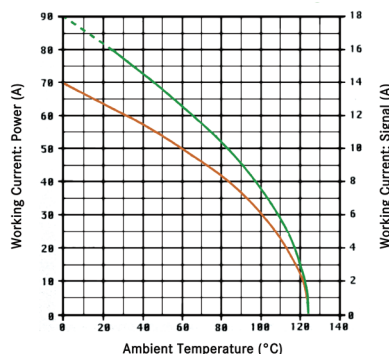
EPIC® Power K 4/2  
 6 AWG (10 mm<sup>2</sup>) power  
 14 AWG (2.5 mm<sup>2</sup>) signal



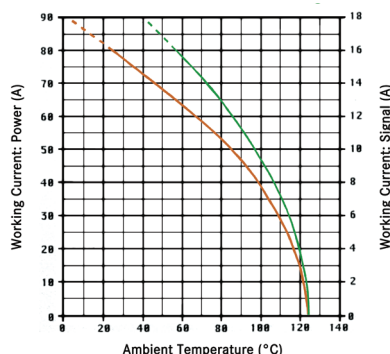
EPIC® Power K 4/8  
 12 AWG (4 mm<sup>2</sup>) power  
 18 AWG (1 mm<sup>2</sup>) signal



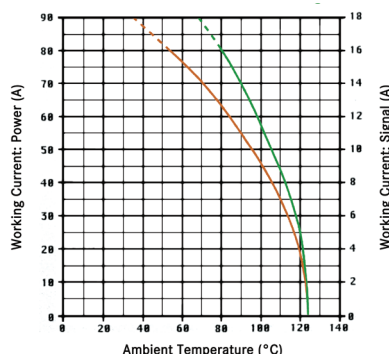
EPIC® Power K 4/8  
 10 AWG (6 mm<sup>2</sup>) power  
 18 AWG (1 mm<sup>2</sup>) signal



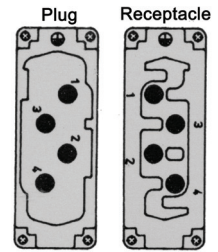
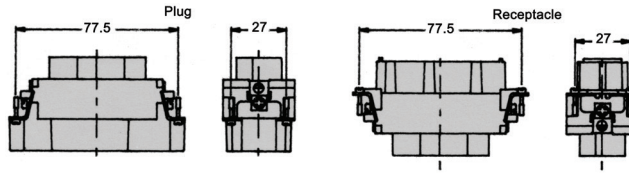
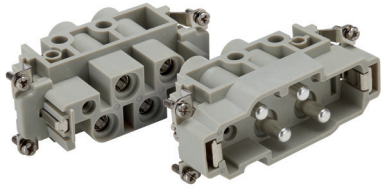
EPIC® Power K 4/8  
 8 AWG (10 mm<sup>2</sup>) power  
 16 AWG (1.5 mm<sup>2</sup>) signal



EPIC® Power K 4/8  
 6 AWG (16 mm<sup>2</sup>) power  
 14 AWG (2.5 mm<sup>2</sup>) signal



**EPIC® Power K 4/0**  
4 power + 0 signal contacts



all dimensions are in mm

view from cable side

Description	Plug	Receptacle
4/0	44424041	44424042

**Compatible housing**

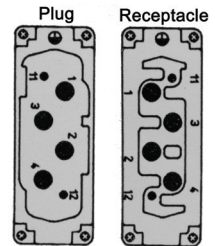
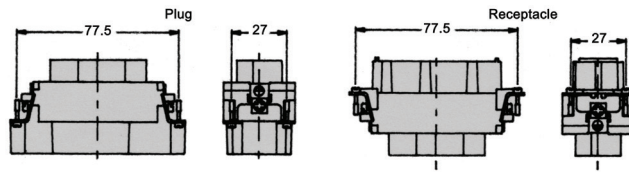
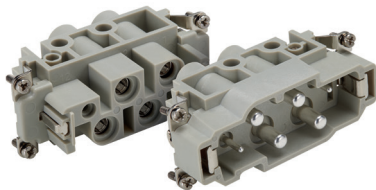


HB 16  
page 388

**Approvals**



**EPIC® Power K 4/2**  
4 power + 2 signal contacts



all dimensions are in mm

view from cable side

Description	Plug	Receptacle
4/2	44424043	44424044

**Compatible housing**

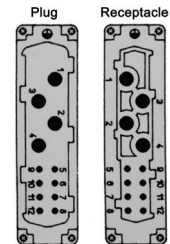
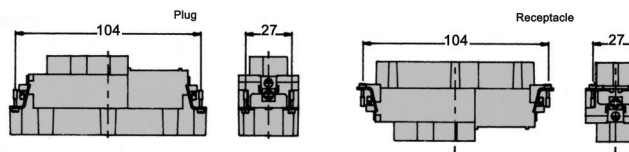
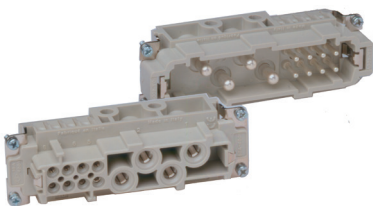


HB 16  
page 388

**Approvals**



**EPIC® Power K 4/8**  
4 power + 8 signal contacts




all dimensions are in mm

view from cable side

Description	Plug	Receptacle
4/8	11/2408	11/1408

**Compatible housing**



HB 24  
page 394

**Approvals**



If not otherwise specified, all values relating to the product are nominal values. Photographs are not to scale and are not true representations of the products in question.