

EPIC® HBS series

Screw-terminated inserts for high-current power applications



EPIC® HBS series inserts are characterized by their higher current-carrying capacity: a little more than twice the capacity of the EPIC® HBE series. A secure electrical connection can be made by simple screw termination for cables up to 10 AWG.

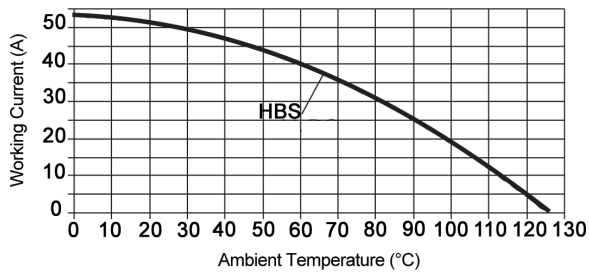
Technical data

Number of contacts:	6, 12 (+PE)	Test voltage:	6 kV
Temperature range:	-40°C to +100°C	Rated voltage:	
- short-term:	up to +125°C	- UL/CSA:	600V
		- IEC:	500V
Pollution level:	3	Rated current:	
		- UL/CSA; IEC:	35A
Mating cycles:	- per DIN EN 61984:2008 Service Life Test: Tested to 100 cycles and passed	Wire size:	20 - 10 AWG (0.5 - 6 mm ²)
	- per Contact Thermal Test: Useful service up to 500 cycles is possible at rated voltage and current*	Contact material:	silver-plated copper alloy
		Contact resistance:	< 2 mΩ

* In dry, non-conductive, non-corrosive environments when protected in a housing rated at least IP54 and disconnected for cycling and maintenance only.

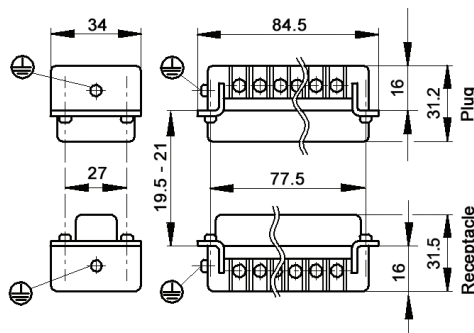
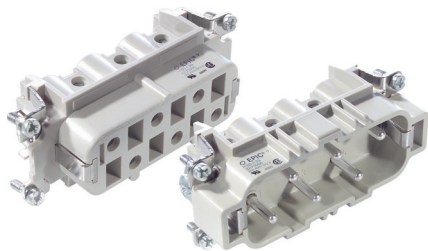
EPIC® HBS derating curves

10 AWG (6 mm²)

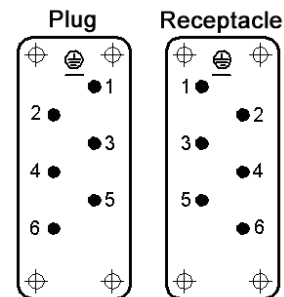


EPIC® HBS 6

screw termination: 600V, 35A



all dimensions are in mm



view from cable side

Termination	Wire protection	Plug	Receptacle
screw termination	yes	10170000	10171000

Compatible housing

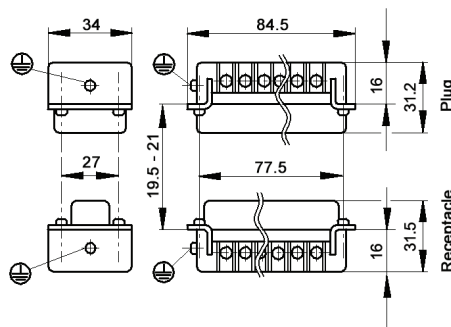
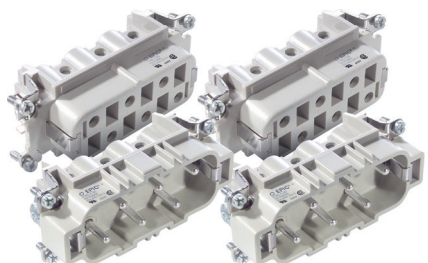


Approvals

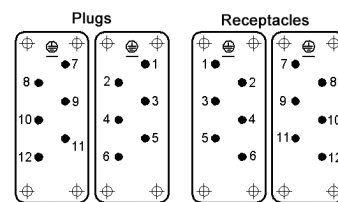


EPIC® HBS 12

screw termination: 600V, 35A



all dimensions are in mm



view from cable side

Termination	Wire protection	Contact numbering	Plug	Receptacle
screw termination	yes	# 1 - 6	10170000	10171000
		# 7 - 12	10170600	10171600

Compatible housing



Approvals



If not otherwise specified, all values relating to the product are nominal values. Photographs are not to scale and are not true representations of the products in question.